

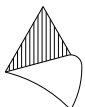
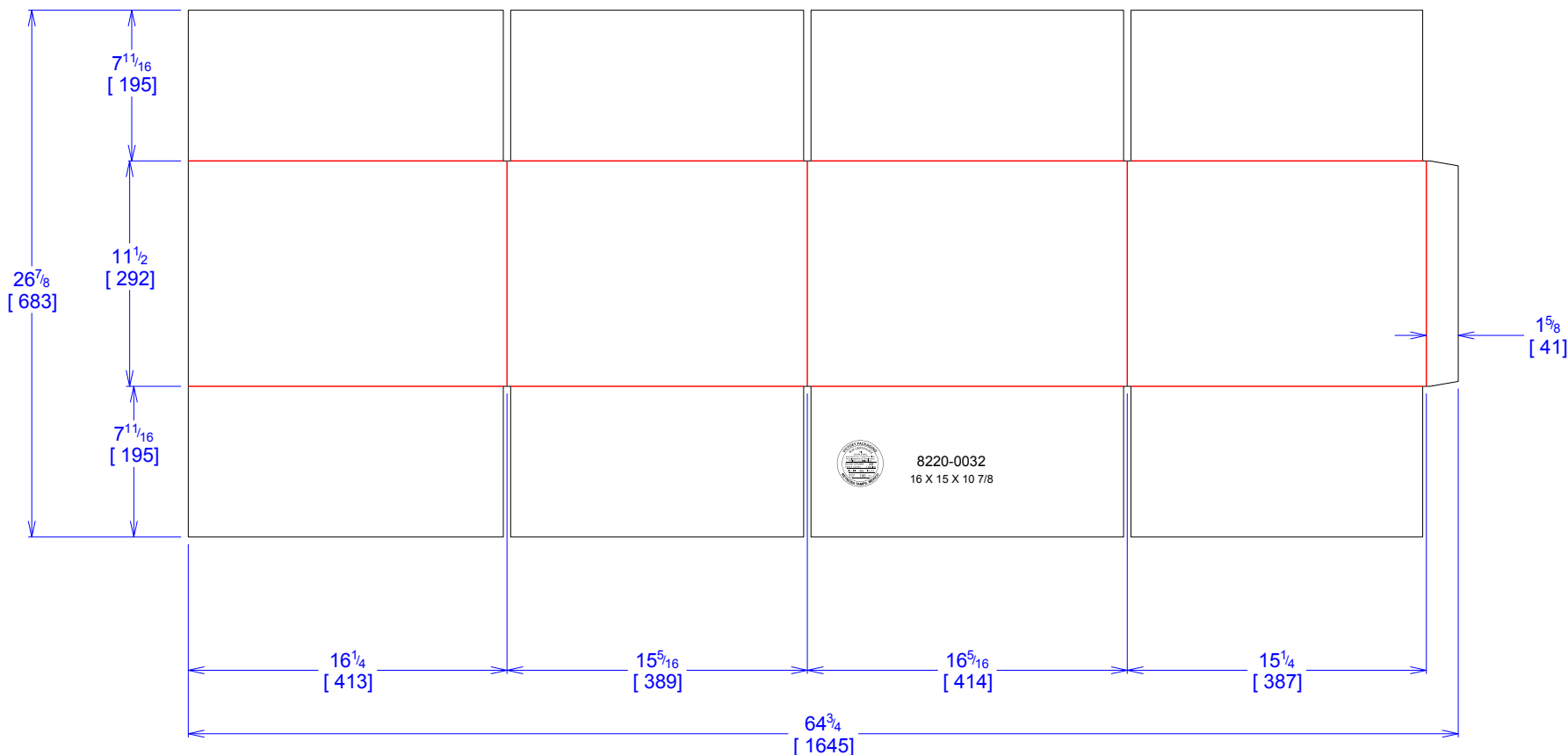


National Account Package Engineering
engsupport@victorypackaging.com
www.victorypackaging.com

| | | | | |
|------------------------------|-----------------------------|--------------------------|----------------------------|----------|
| CUSTOMER: Schneider-Electric | ID: 16 x 15 x 10+7/8 | ENGINEER: Carlos Salinas | DESIGN #: D12848198 | 0 |
| ITEM: SD- 8220-0032 | BLANK SIZE: 26+7/8 x 64+3/4 | SALES REP: Luis Co | DR #: M153-00025 | |
| CUST PROD. #: | SQ FT: 12.08 | JOINT: Glued In | PRINT DATE: 08/17/2020 | |
| STYLE: RSC | WASTE (%): 2.62 | CORR DIRECTION: Vertical | VIEW: outside | |
| MATERIAL: 48 ECT BC Kraft | RULE TOTAL IN: 444.668 | PROJECT NAME: SCHNEIDER* | | |
| MATERIAL NOTES: | | GENERAL NOTES: | | |



8220-0032
16 X 15 X 10 7/8



Vertical Corrugation

| |
|---------------------------|
| Print Status: ID and Cert |
| Colors: |

| General Tolerances unless otherwise noted: | | | |
|--|----------|---------------------|----------|
| Die Cut Corrugated Flat: | +/- 1/16 | Pad/Block location: | +/- 1/8 |
| Die Cut Corrugated Rotary: | +/- 3/16 | Pad/Sheet: | +/- 1/8 |
| | | Wood Block: | +/- 1/4 |
| | | Foam Block: | +/- 3/16 |

Specification Release
Approved for Production:

Yes