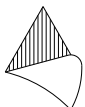
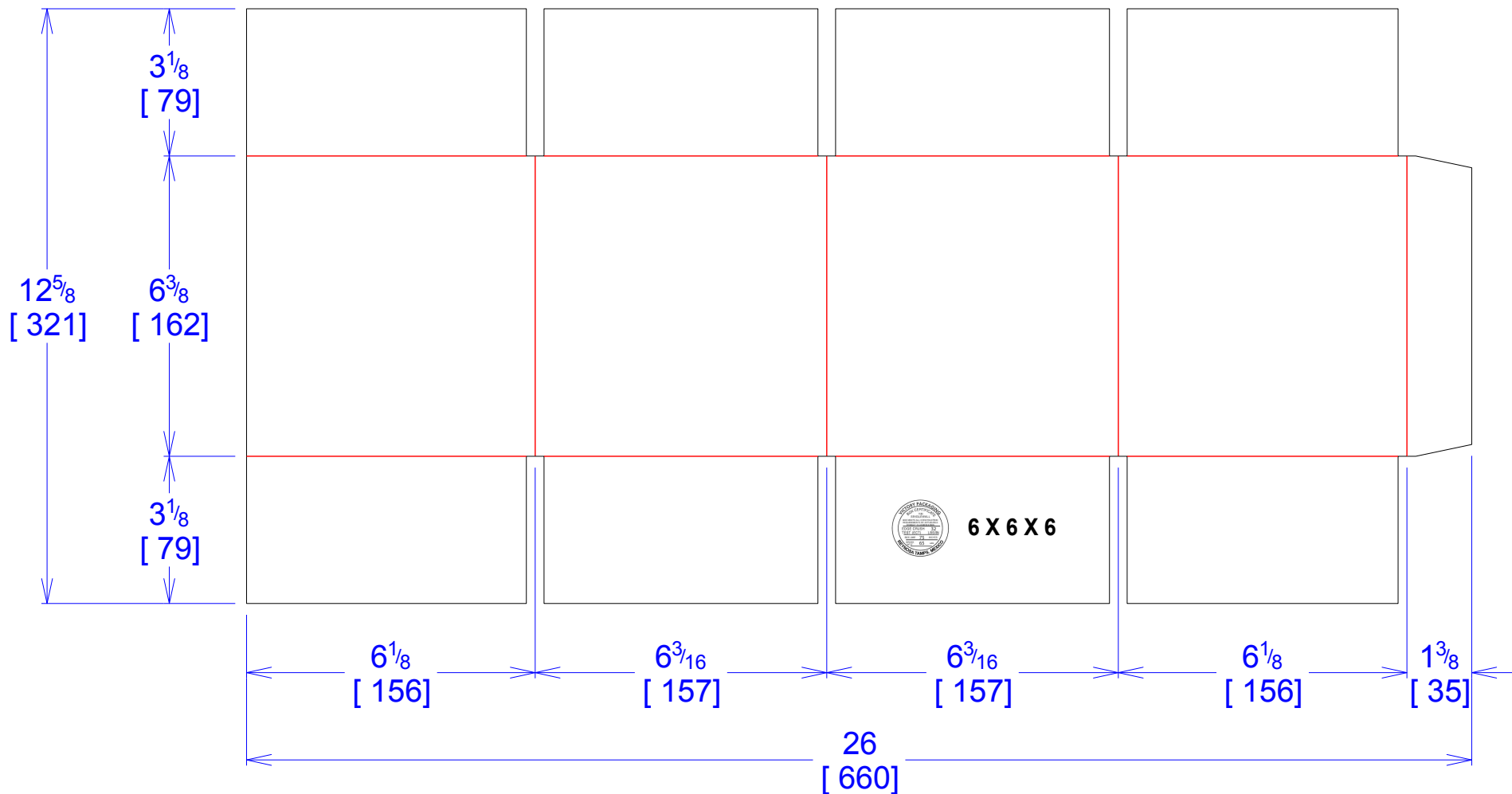




National Account Package Engineering  
engsupport@victorypackaging.com  
www.victorypackaging.com

CUSTOMER:	Rexnord	ID:	6 x 6 x 6	ENGINEER:	Carlos Salinas	DESIGN #:	<b>D12987599</b>	<b>0</b>
ITEM:	REX-6 X 6 X 6 BOX	BLANK SIZE:	12+5/8 x 26	SALES REP:	Fernando Romero	DR #:	M202-00302	
CUST PROD. #:		SQ FT:	2.28	JOINT:	Glued In	PRINT DATE:	09/09/2020	
STYLE:	RSC	WASTE (%):	5.21	CORR DIRECTION:	Vertical	VIEW:	outside	
MATERIAL:	32 ECT C Kraft	RULE TOTAL IN:	186.427	PROJECT NAME:	M202-00302 REXNORD			
MATERIAL NOTES:				GENERAL NOTES:				



Vertical Corrugation

Print Status:	ID and Cert
Colors:	Black GCM1 90

General Tolerances unless otherwise noted:			
Die Cut Corrugated Flat:	+/- 1/16	Pad/Block location:	+/- 1/8
Die Cut Corrugated Rotary:	+/- 3/16	Pad/Sheet:	+/- 1/8
Wood Block:	+/- 1/4	Foam Block:	+/- 3/16

Specification Release  
Approved for Production:

**Yes**