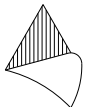
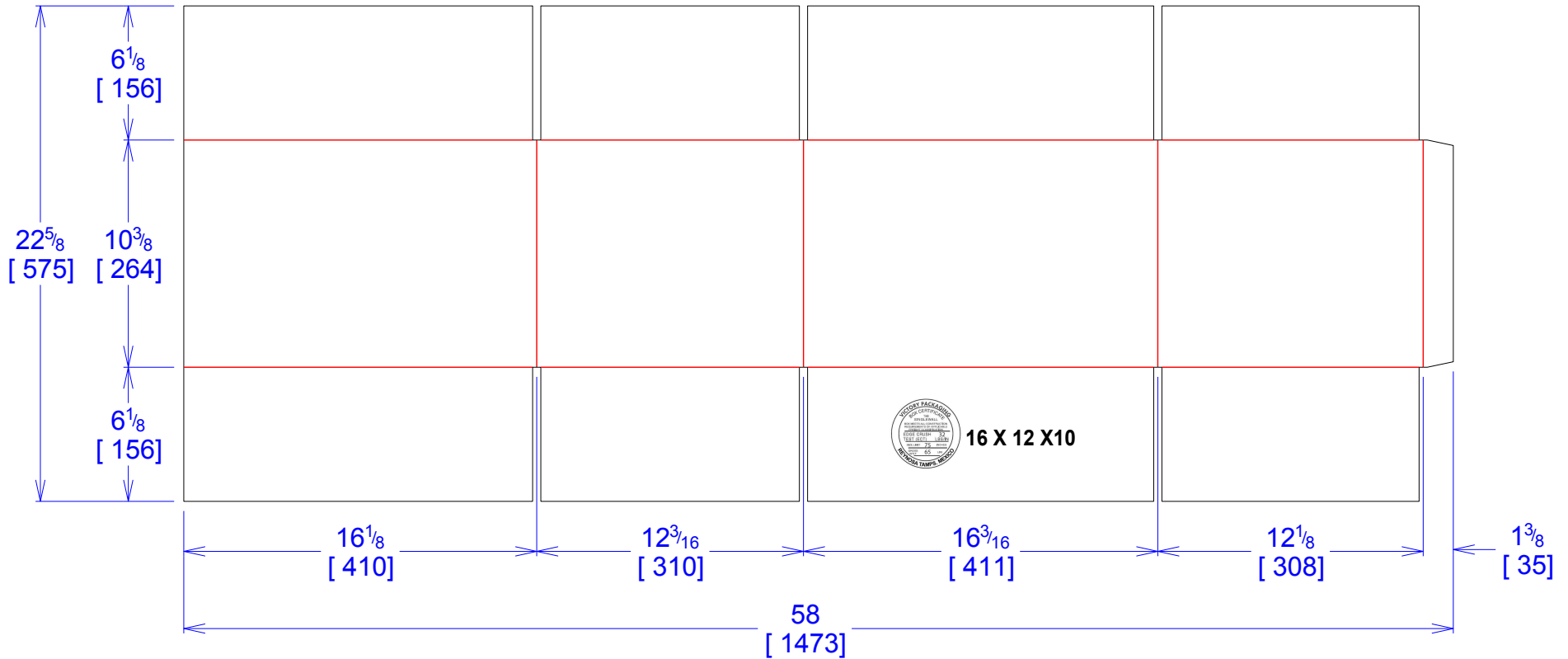




National Account Package Engineering
engsupport@victorypackaging.com
www.victorypackaging.com

CUSTOMER:	Rexnord	ID:	16 x 12 x 10	ENGINEER:	Carlos Salinas	DESIGN #:	D12987603	0
ITEM:	REX-16 X 12 X 10 BOX	BLANK SIZE:	22+5/8 x 58	SALES REP:	Fernando Romero	DR #:	M202-00302	
CUST PROD. #:		SQ FT:	9.11	JOINT:	Glued In	PRINT DATE:	09/09/2020	
STYLE:	RSC	WASTE (%):	2.53	CORR DIRECTION:	Vertical	VIEW:	outside	
MATERIAL:	32 ECT C Kraft	RULE TOTAL IN:	386.427	PROJECT NAME:	M202-00302 REXNORD			
MATERIAL NOTES:				GENERAL NOTES:				



Vertical Corrugation

Print Status:	ID and Cert
Colors:	BLACK GCM1 90

General Tolerances unless otherwise noted:			
Die Cut Corrugated Flat:	+/- 1/16	Pad/Block location:	+/- 1/8
Die Cut Corrugated Rotary:	+/- 3/16	Pad/Sheet:	+/- 1/8
Wood Block:	+/- 1/4	Foam Block:	+/- 3/16

Specification Release
Approved for Production:

Yes