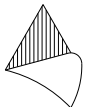
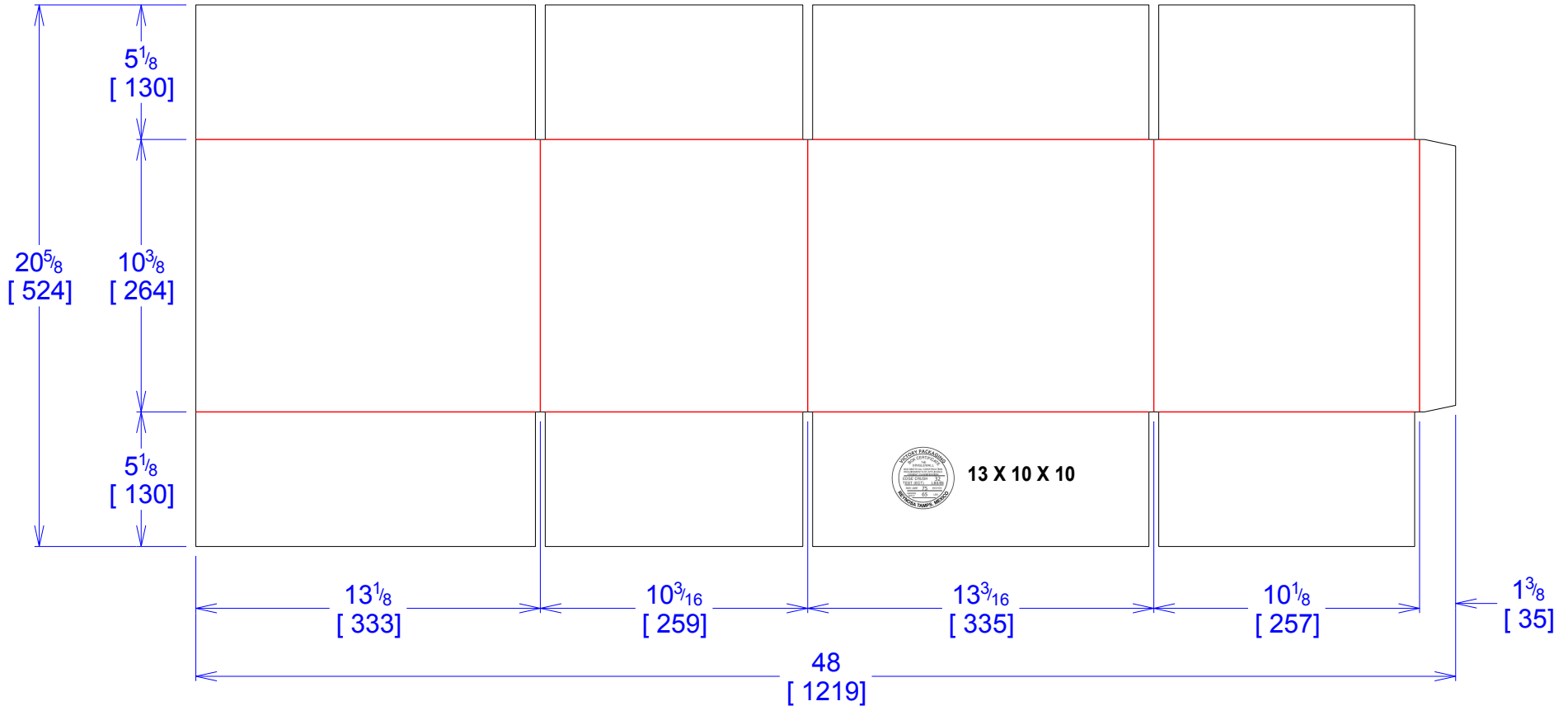




National Account Package Engineering  
engsupport@victorypackaging.com  
www.victorypackaging.com

CUSTOMER:	Rexnord	ID:	13 x 10 x 10	ENGINEER:	Carlos Salinas	DESIGN #:	<b>D12987601</b>	<b>0</b>
ITEM:	REX-13 X 10 X 10 BOX	BLANK SIZE:	20+5/8 x 48	SALES REP:	Fernando Romero	DR #:	M202-00302	
CUST PROD. #:		SQ FT:	6.87	JOINT:	Glued In	PRINT DATE:	09/09/2020	
STYLE:	RSC	WASTE (%):	2.81	CORR DIRECTION:	Vertical	VIEW:	outside	
MATERIAL:	32 ECT C Kraft	RULE TOTAL IN:	330.427	PROJECT NAME:	M202-00302 REXNORD			
MATERIAL NOTES:				GENERAL NOTES:				



Vertical Corrugation

Print Status:	ID and Cert
Colors:	BLACK GCM1 90

General Tolerances unless otherwise noted:			
Die Cut Corrugated Flat:	+/- 1/16	Pad/Block location:	+/- 1/8
Die Cut Corrugated Rotary:	+/- 3/16	Pad/Sheet:	+/- 1/8
		Wood Block:	+/- 1/4
		Foam Block:	+/- 3/16

Specification Release  
Approved for Production:

**Yes**