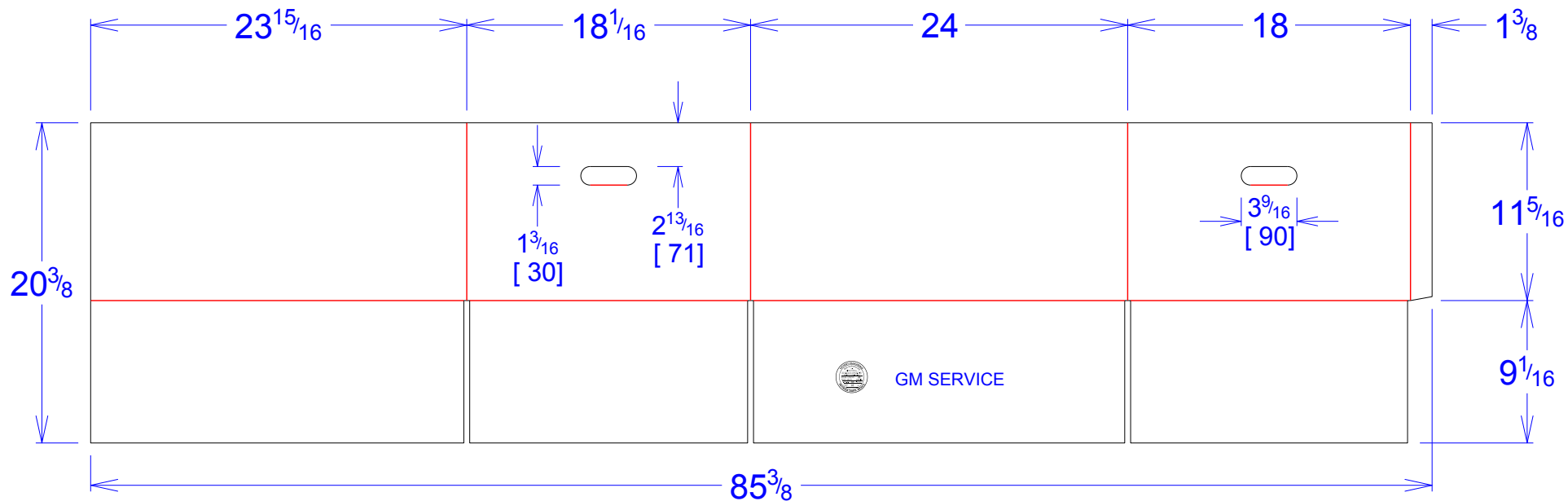




CUSTOMER:	VISTEON	ID:	23+13/16 x 17+7/8 x 11+1/8	ENGINEER:	Carlos Salinas	DESIGN #:	D12884247	0
ITEM:	Servicios GM box	BLANK SIZE:	20+3/8 x 85+3/8	SALES REP:	Luis Co			
CUST PROD. #:		SQ FT:	12.08	JOINT:	Glued In	DR #:	M164-00321	
STYLE:	HSC	WASTE (%):	1.41	CORR DIRECTION:	Vertical	PRINT DATE:	02/28/2020	
MATERIAL:	44 ECT C Kraft	RULE TOTAL IN:	410.455	PROJECT NAME:	Visteon -M164-00321-Servicios*	VIEW:	outside	
MATERIAL NOTES:				GENERAL NOTES:				



Vertical Corrugation

GRAPHICS	Print Status: ID and Cert
	Colors:

General Tolerances unless otherwise noted:			
Die Cut Corrugated Flat: +/- 1/16	Pad/Block location: +/- 1/8	Wood Block:	+/- 1/4
Die Cut Corrugated Rotary: +/- 3/16	Pad/Sheet: +/- 1/8	Foam Block:	+/- 3/16

**Specification Release
Approved for Production:**

Yes

Notice: The information contained in this drawing is the sole property of Victory Packaging. Any reproduction in part or as a whole without written permission is prohibited.

Form 8-F-90