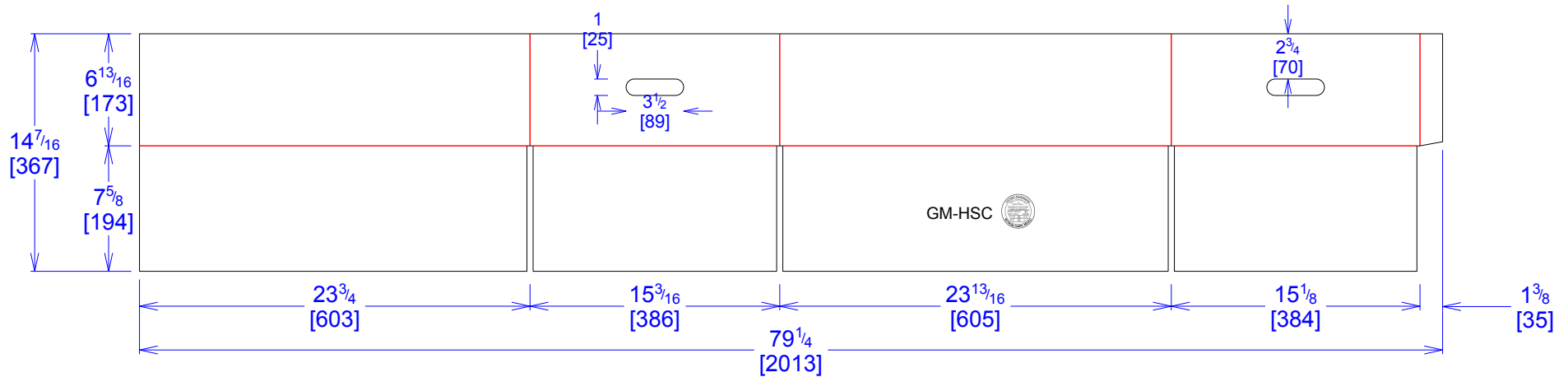




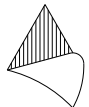
National Account Package Engineering  
engsupport@victorypackaging.com  
www.victorypackaging.com

|                 |                |                |                     |                 |                    |             |                  |          |
|-----------------|----------------|----------------|---------------------|-----------------|--------------------|-------------|------------------|----------|
| CUSTOMER:       | VISTEON        | ID:            | 23+5/8 x 15 x 6+5/8 | ENGINEER:       | Gerrardo Arrambide | DESIGN #:   | <b>D13009511</b> | <b>0</b> |
| ITEM:           | RAWVIS-GM-HSC  | BLANK SIZE:    | 14+7/16 x 79+1/4    | SALES REP:      | Luis Coo           | DR #:       | M204-00738       |          |
| CUST PROD. #:   |                | SQ FT:         | 7.95                | JOINT:          | Glued In           | PRINT DATE: | 01/07/2021       |          |
| STYLE:          | HSC            | WASTE (%):     | 1.81                | CORR DIRECTION: | Vertical           | VIEW:       | outside          |          |
| MATERIAL:       | 44 ECT C Kraft | RULE TOTAL IN: | 352.993             | PROJECT NAME:   | M204-00738 Visteon |             |                  |          |
| MATERIAL NOTES: |                |                |                     | GENERAL NOTES:  |                    |             |                  |          |

USA MISMA TAPA QUE GM-JCI-004 HSC



GM-HSC



Vertical Corrugation

|               |             |
|---------------|-------------|
| Print Status: | ID and Cert |
| Colors:       |             |

| General Tolerances unless otherwise noted: |          |                     |          |
|--|----------|---------------------|----------|
| Die Cut Corrugated Flat:                   | +/- 1/16 | Pad/Block location: | +/- 1/8  |
| Die Cut Corrugated Rotary:                 | +/- 3/16 | Pad/Sheet:          | +/- 1/8  |
|  |          | Wood Block:         | +/- 1/4  |
|  |          | Foam Block:         | +/- 3/16 |

Specification Release  
Approved for Production:

Yes