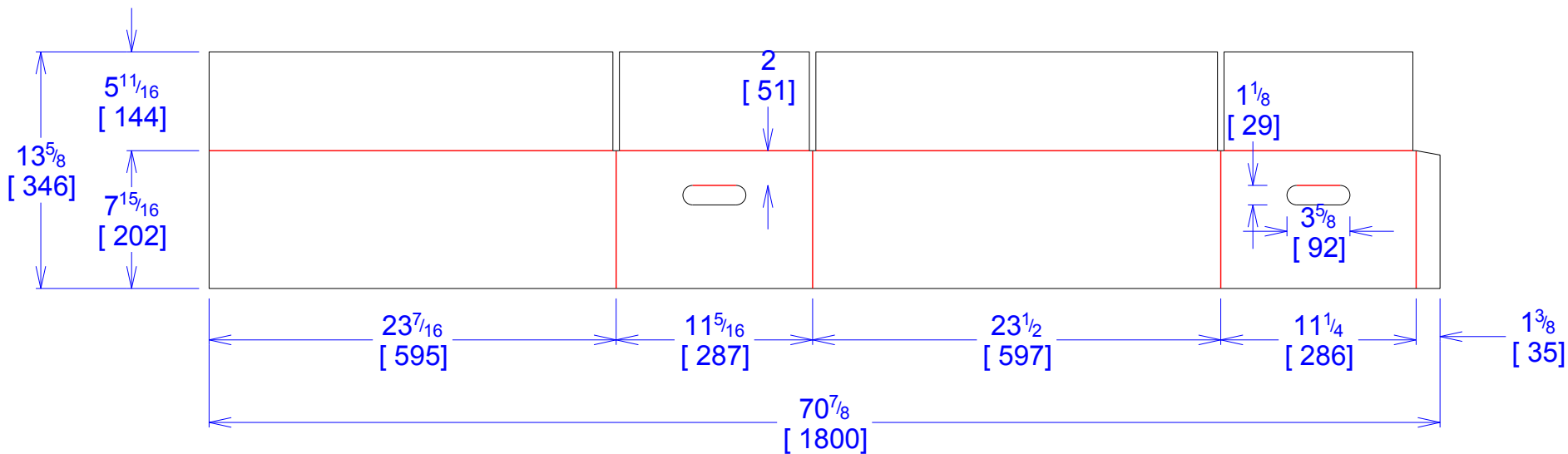




National Account Package Engineering
engsupport@victorypackaging.com
www.victorypackaging.com

| | | | | | | | | |
|-----------------|---------------------|----------------|--------------------------|-----------------|-------------------|-------------|------------------|----------|
| CUSTOMER: | Kimball Electronics | ID: | 23+5/16 x 11+1/8 x 7+3/4 | ENGINEER: | Carlos Salinas | DESIGN #: | D12968127 | 0 |
| ITEM: | RAWKIM-KCM16491-TOP | BLANK SIZE: | 13+5/8 x 70+7/8 | SALES REP: | Luis Coo | DR #: | M193-00558 | |
| CUST PROD. #: | KCM16491 | SQ FT: | 6.71 | JOINT: | Glued In | PRINT DATE: | 11/15/2019 | |
| STYLE: | HSC | WASTE (%): | 1.6 | CORR DIRECTION: | Vertical | VIEW: | outside | |
| MATERIAL: | 44 ECT C Kraft | RULE TOTAL IN: | 319.904 | PROJECT NAME: | M193-00558 KIMBAL | | | |
| MATERIAL NOTES: | | | | GENERAL NOTES: | | | | |



Vertical Corrugation

| | |
|---------------|---------|
| Print Status: | Printed |
| Colors: | |

| General Tolerances unless otherwise noted: | | | |
|--|----------|---------------------|----------|
| Die Cut Corrugated Flat: | +/- 1/16 | Pad/Block location: | +/- 1/8 |
| Die Cut Corrugated Rotary: | +/- 3/16 | Pad/Sheet: | +/- 1/8 |
| Wood Block: | +/- 1/4 | Foam Block: | +/- 3/16 |

Specification Release
Approved for Production:

Yes