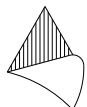
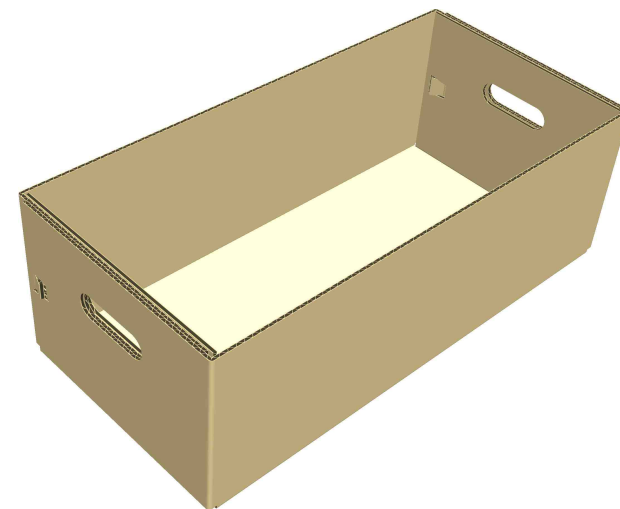
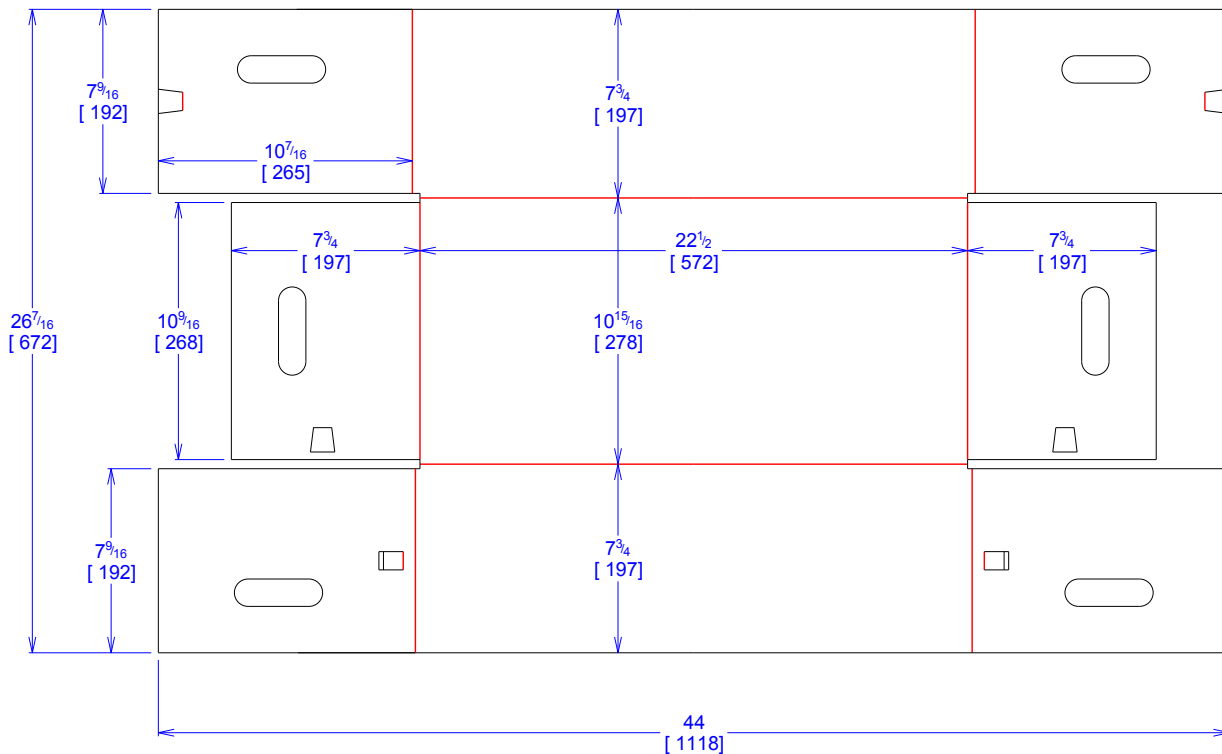




National Account Package Engineering
engsupport@victorypackaging.com
www.victorypackaging.com

CUSTOMER:	Kimball Electronics	ID:	22+5/16 x 10+3/4 x 7+5/8	ENGINEER:	Carlos Salinas	DESIGN #:	D12970707	0
ITEM:	RAWKIM-KCM16491-BASE	BLANK SIZE:	26+7/16 x 44	SALES REP:	Luis Coo	DR #:	M193-00558	
CUST PROD. #:	KCM16491	SQ FT:	8.08	JOINT:		PRINT DATE:	11/15/2019	
STYLE:	DC	WASTE (%):	6.83	CORR DIRECTION:	Vertical	VIEW:	outside	
MATERIAL:	44 ECT C Kraft	RULE TOTAL IN:	393.581	PROJECT NAME:	M193-00558 KIMBAL			
MATERIAL NOTES:				GENERAL NOTES:				



Vertical Corrugation

Print Status:	ID and Cert
Colors:	

General Tolerances unless otherwise noted:					
Die Cut Corrugated Flat:	+/- 1/16	Pad/Block location:	+/- 1/8	Wood Block:	+/- 1/4
Die Cut Corrugated Rotary:	+/- 3/16	Pad/Sheet:	+/- 1/8	Foam Block:	+/- 3/16

Specification Release
Approved for Production:

Yes