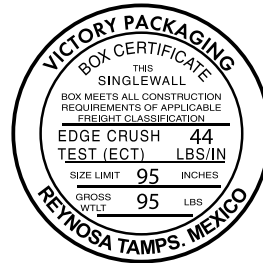
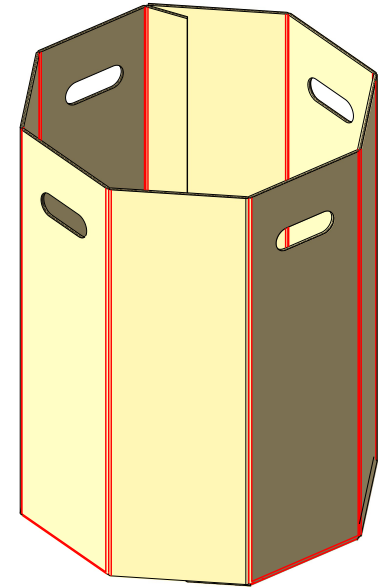
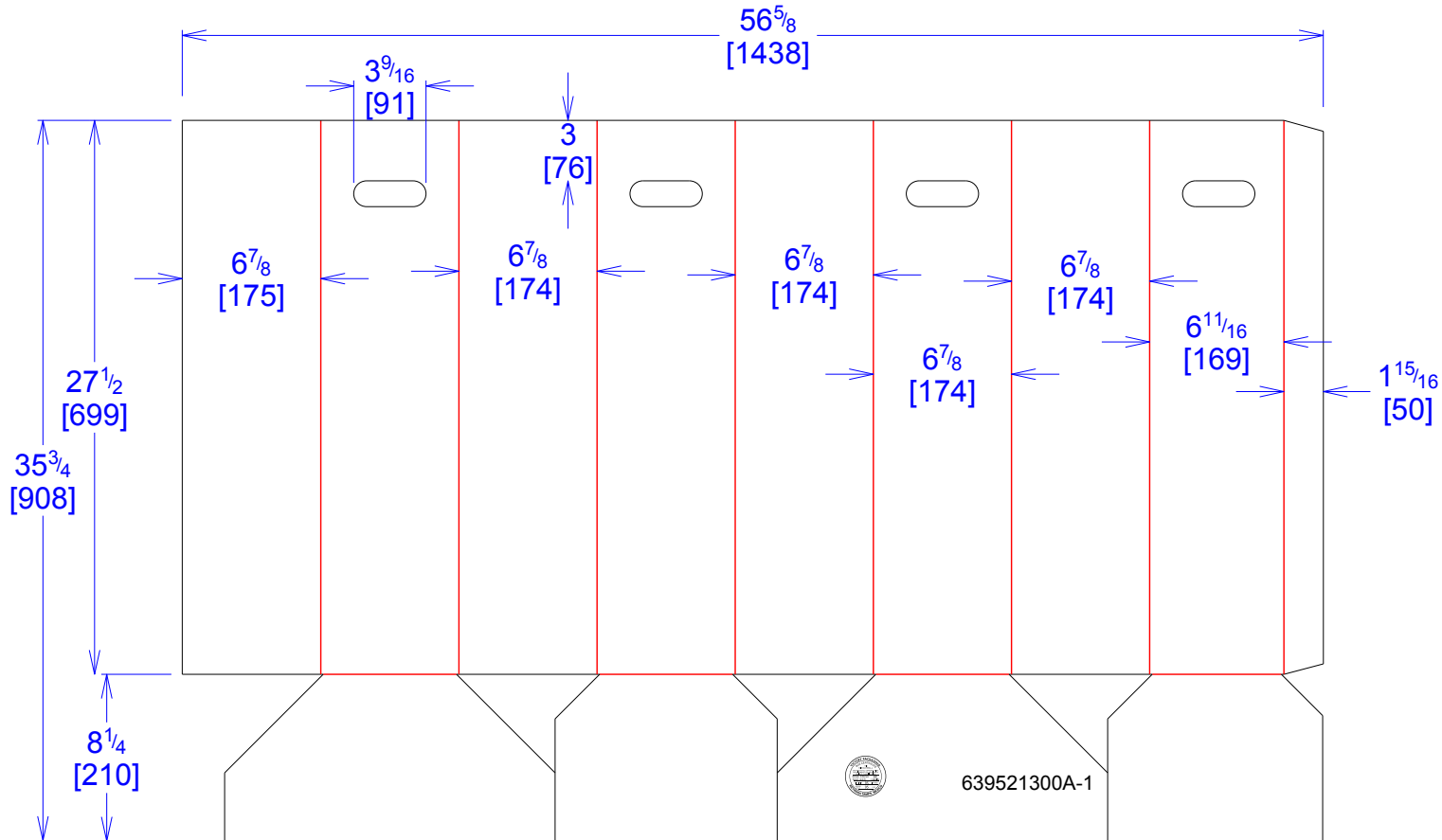




National Account Package Engineering
engsupport@victorypackaging.com
www.victorypackaging.com

CUSTOMER:	Autoliv	ID:	15+15/16 x 15+15/16 x 27+5/16	ENGINEER:	Franco Gonzalez	DESIGN #:	D12856878	0
ITEM:	639521300A-1	BLANK SIZE:	35+3/4 x 56+5/8	SALES REP:	Antonio Garcia	DR #:	M142-00359 rev. 3	
CUST PROD. #:		SQ FT:	14.06	JOINT:	Glued In	PRINT DATE:	04/06/2016	
STYLE:	tube	WASTE (%):	1.62	CORR DIRECTION:	Vertical	VIEW:	outside	
MATERIAL:	44 ECT C Kraft	RULE TOTAL IN:	544	KIT:	AUTOLIV-M154-00173			
MATERIAL NOTES:				GENERAL NOTES:				



Vertical Corrugation

Print Status:	ID and Cert
Colors:	

General Tolerances unless otherwise noted:			
Die Cut Corrugated Flat:	+/- 1/16	Pad/Block location:	+/- 1/8
Die Cut Corrugated Rotary:	+/- 3/16	Pad/Sheet:	+/- 1/8
		Wood Block:	+/- 1/4
		Foam Block:	+/- 3/16

Specification Release Approved for Production:	Yes
---	------------