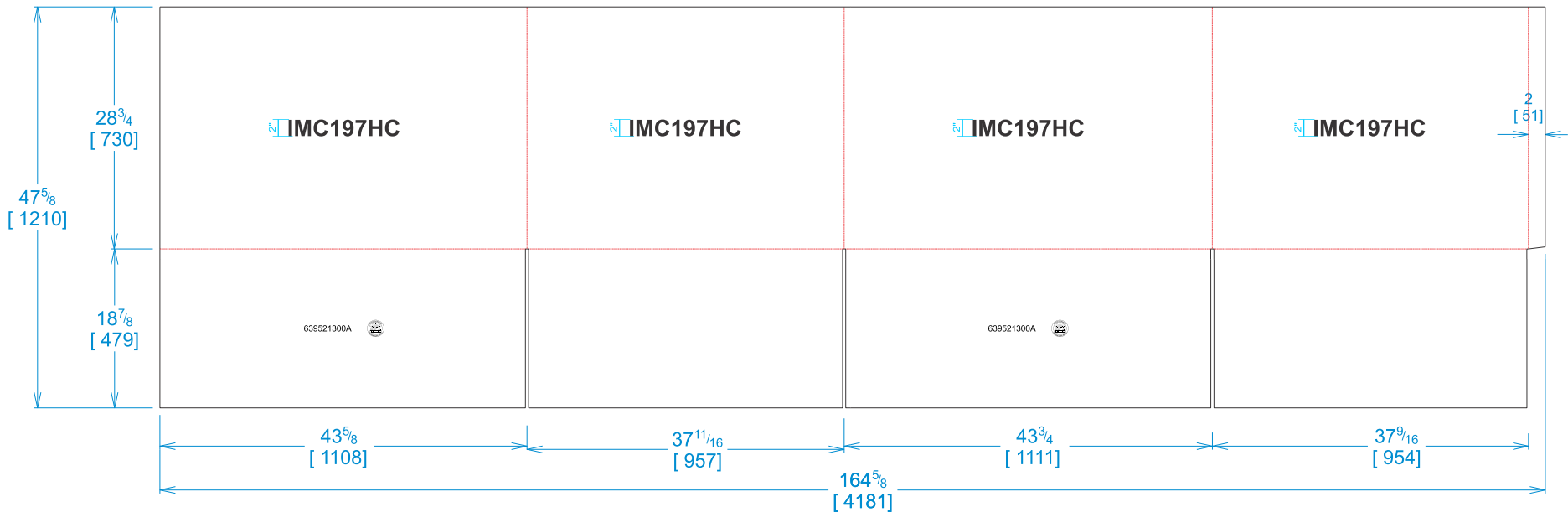


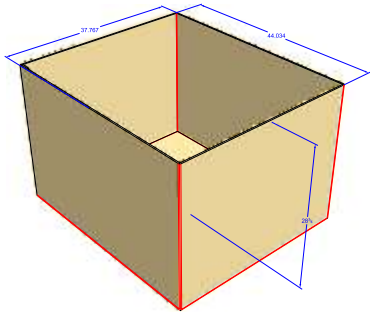


National Account Package Engineering
engsupport@victorypackaging.com
www.victorypackaging.com

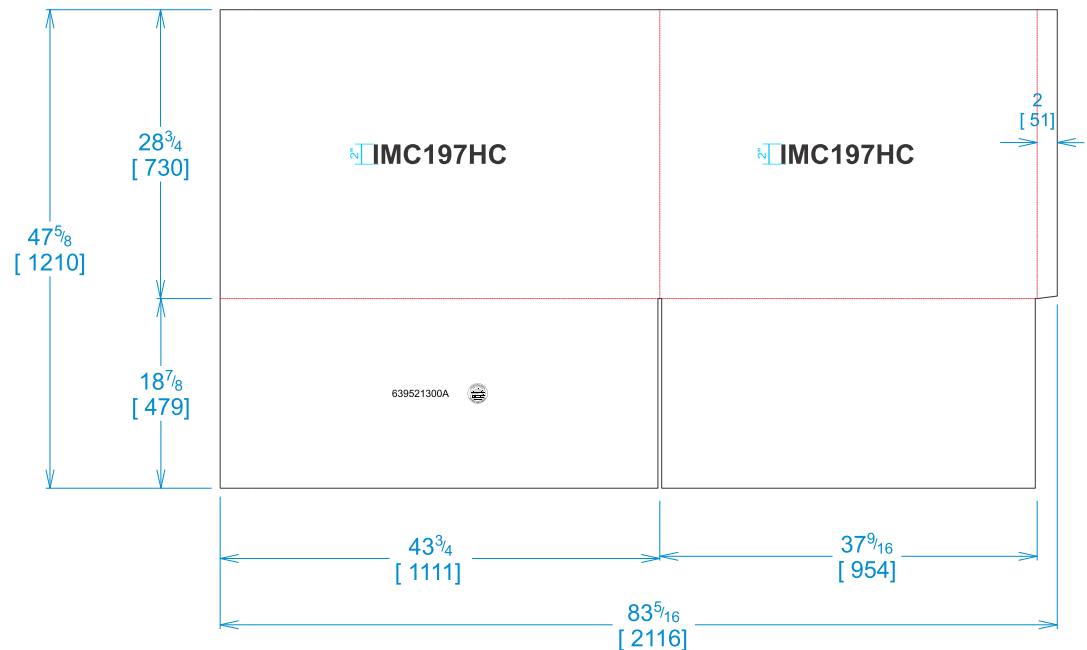
CUSTOMER:	Autoliv	ID:	43+7/16 x 37+3/8 x 27+1/2	ENGINEER:	Alejandro Diaz	DESIGN #:	D12865594	0
ITEM:	RAWDSI639521300A HSC	BLANK SIZE:	47+5/8 x 164+5/8	SALES REP:	Antonio Garcia	DR #:	M154-00173	
CUST PROD. #:	639521300A	SQ FT:	54.45	JOINT:	Glued In	PRINT DATE:	05/30/2016	
STYLE:	HSC	WASTE (%):	0.8	CORR DIRECTION:	Vertical	VIEW:	outside	
MATERIAL:	71 ECT BC Kraft	RULE TOTAL IN:	813+53/64	KIT:	AUTOLIV-M154-00173			
MATERIAL NOTES:				GENERAL NOTES:				



Dimension Externa



media pieza para hacer caja en 2 partes



639521300A

2" IMC197HC



Vertical Corrugation

Print Status:	Printed
Colors:	GCM1 90 Black

General Tolerances unless otherwise noted:			
Die Cut Corrugated Flat:	+/- 1/16	Pad/Block location:	+/- 1/8
Die Cut Corrugated Rotary:	+/- 3/16	Pad/Sheet:	+/- 1/8
		Wood Block:	+/- 1/4
		Foam Block:	+/- 3/16

Specification Release
Approved for Production:

Yes