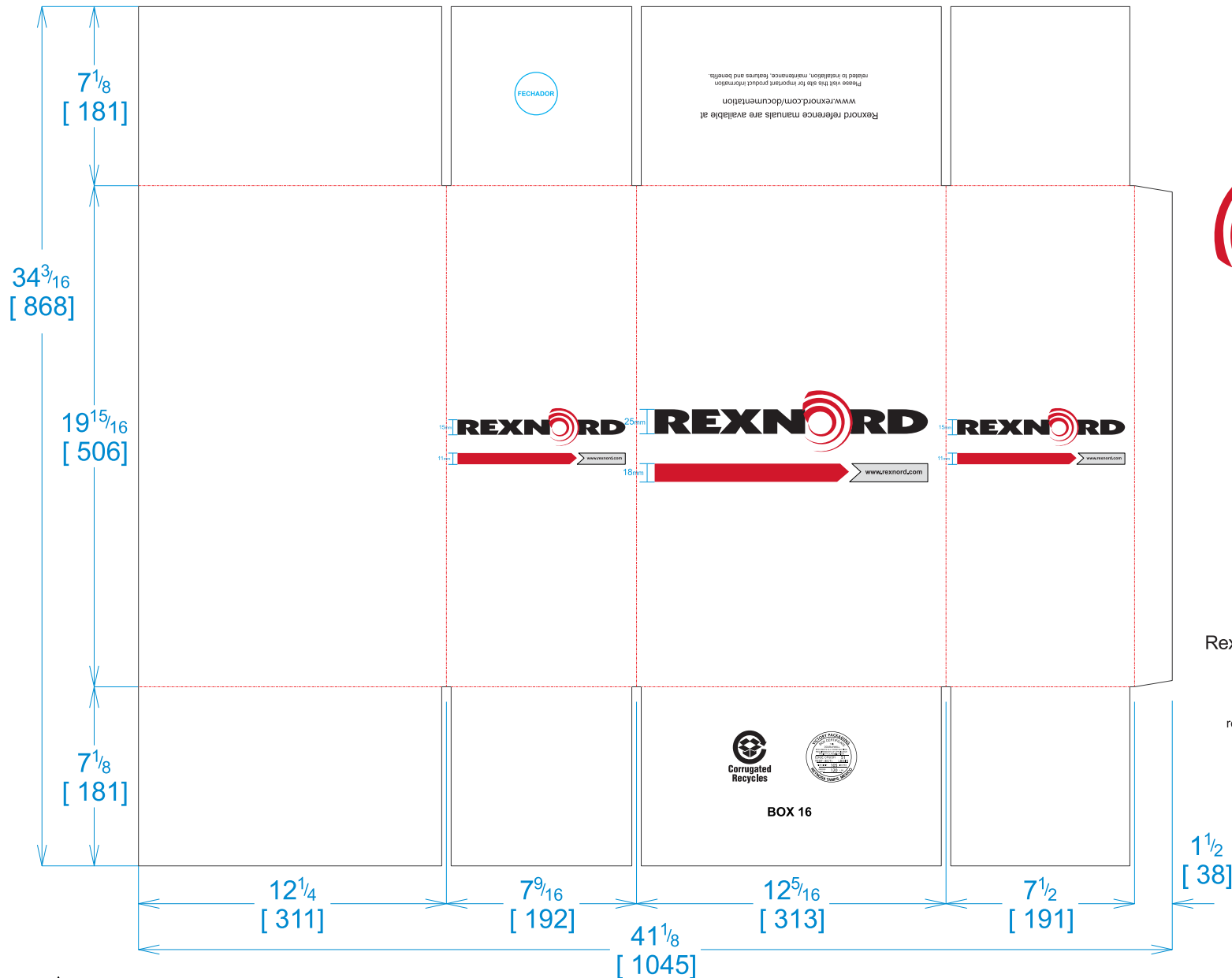




**Victory
Packaging**

National Account Package Engineering
engsupport@victorypackaging.com
www.victorypackaging.com

CUSTOMER:	Rexnord	ID:	12 x 7+1/4 x 19+1/8	ENGINEER:	Carlos Salinas	DESIGN #:	D12981237	0
ITEM:	BOX 16	BLANK SIZE:	34+3/16 x 41+1/8	SALES REP:	Fernando Romero	DR #:	M193-00140 REV. 5	
CUST PROD. #:		SQ FT:	9.76	JOINT:	Glued In	PRINT DATE:	02/18/2020	
STYLE:	FOL	WASTE (%):	2.88	CORR DIRECTION:	Vertical	VIEW:	outside	
MATERIAL:	51 ECT BC Kraft	RULE TOTAL IN:	392.041	PROJECT NAME:	M193-00140 REV. 5			
MATERIAL NOTES:				GENERAL NOTES:				

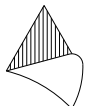


Rexnord reference manuals are available at
www.rexnord.com/documentation

Please visit this site for important product information
related to installation, maintenance, features and benefits.

BOX 16

Std. Pack
150 piezas
por Pallet



Vertical Corrugation

Print Status: Printed
Colors: GCM1 90 Black / PMS 186U Red

General Tolerances unless otherwise noted:

Die Cut Corrugated Flat:	+/- 1/16	Pad/Block location:	+/- 1/8	Wood Block:	+/- 1/4
Die Cut Corrugated Rotary:	+/- 3/16	Pad/Sheet:	+/- 1/8	Foam Block:	+/- 3/16

Specification Release
Approved for Production:

YES