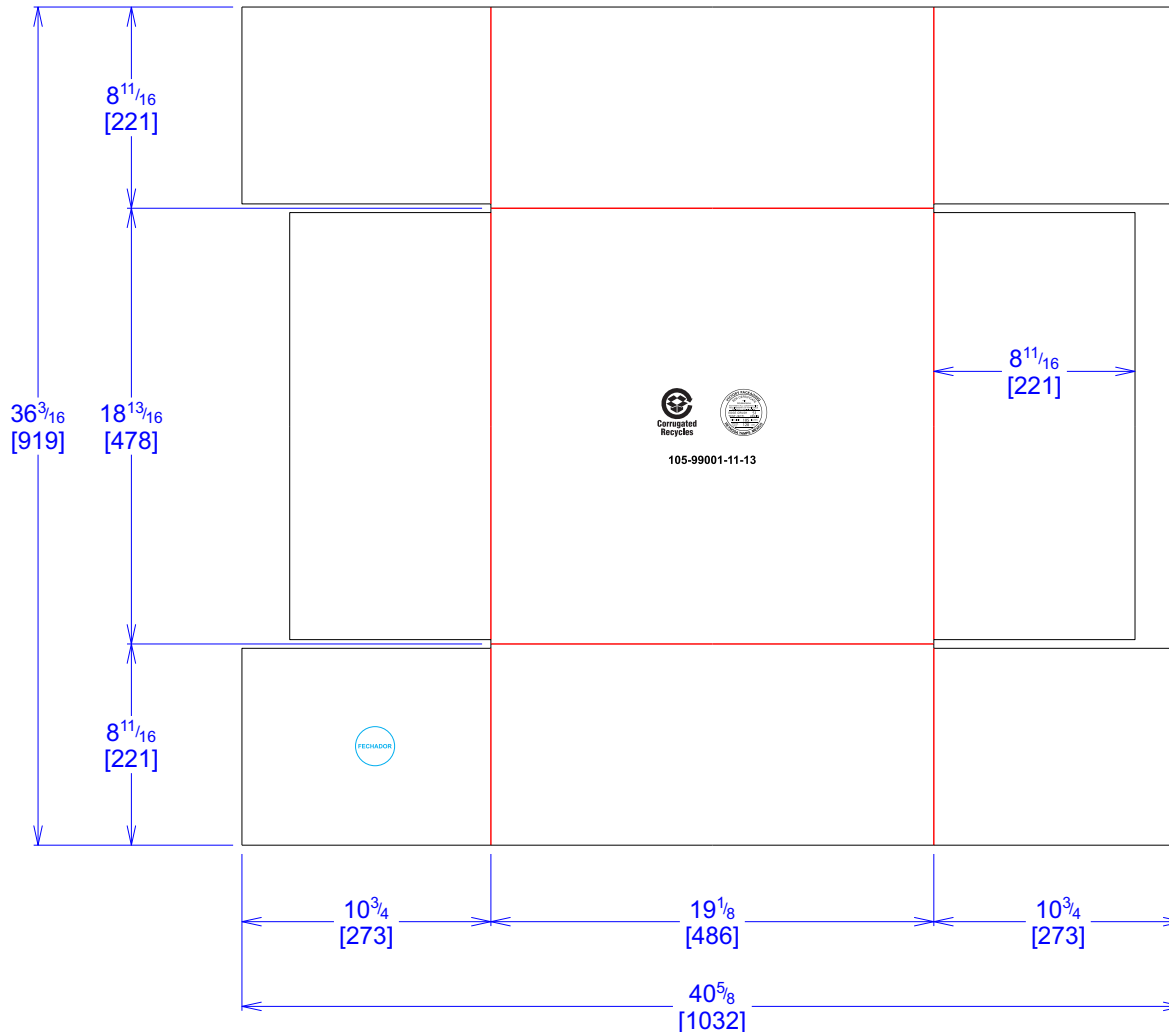




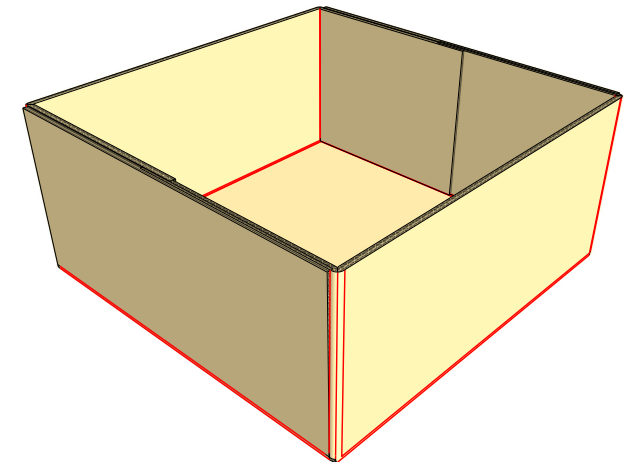
Victory Packaging

National Account Package Engineering
engsupport@victorypackaging.com
www.victorypackaging.com

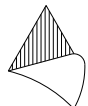
CUSTOMER: Rexnord	ID: 18+1/2 x 18+1/2 x 8+1/2	ENGINEER: Gerrardo Arrambide	DESIGN #: D12970540	0
ITEM: 105-99001-11-13 BTM	BLANK SIZE: 36+3/16 x 40+5/8	SALES REP: HOUSE		
CUST PROD. #:	SQ. FT.: 10.21	JOINT:	DR #: M193-00140	
STYLE: DC TRAY	WASTE (%): 6.27	CORR DIRECTION: Vertical	PRINT DATE: 09/26/2019	
MATERIAL: 51 ECT BC Kraft	RULE TOTAL IN: 340.499	PROJECT NAME: M192-00612 REXNORD	VIEW: outside	
MATERIAL NOTES:				
GENERAL NOTES:				



105-99001-11-13



Std. Pack
150 piezas
por Pallet



Vertical Corrugation

Print Status: Printed
Colors: GCM1 90 Black

General Tolerances unless otherwise noted:			
Die Cut Corrugated Flat:	+/- 1/16	Pad/Block location:	+/- 1/8
Die Cut Corrugated Rotary:	+/- 3/16	Pad/Sheet:	+/- 1/8
		Wood Block:	+/- 1/4
		Foam Block:	+/- 3/16

Specification Release
Approved for Production:

YES