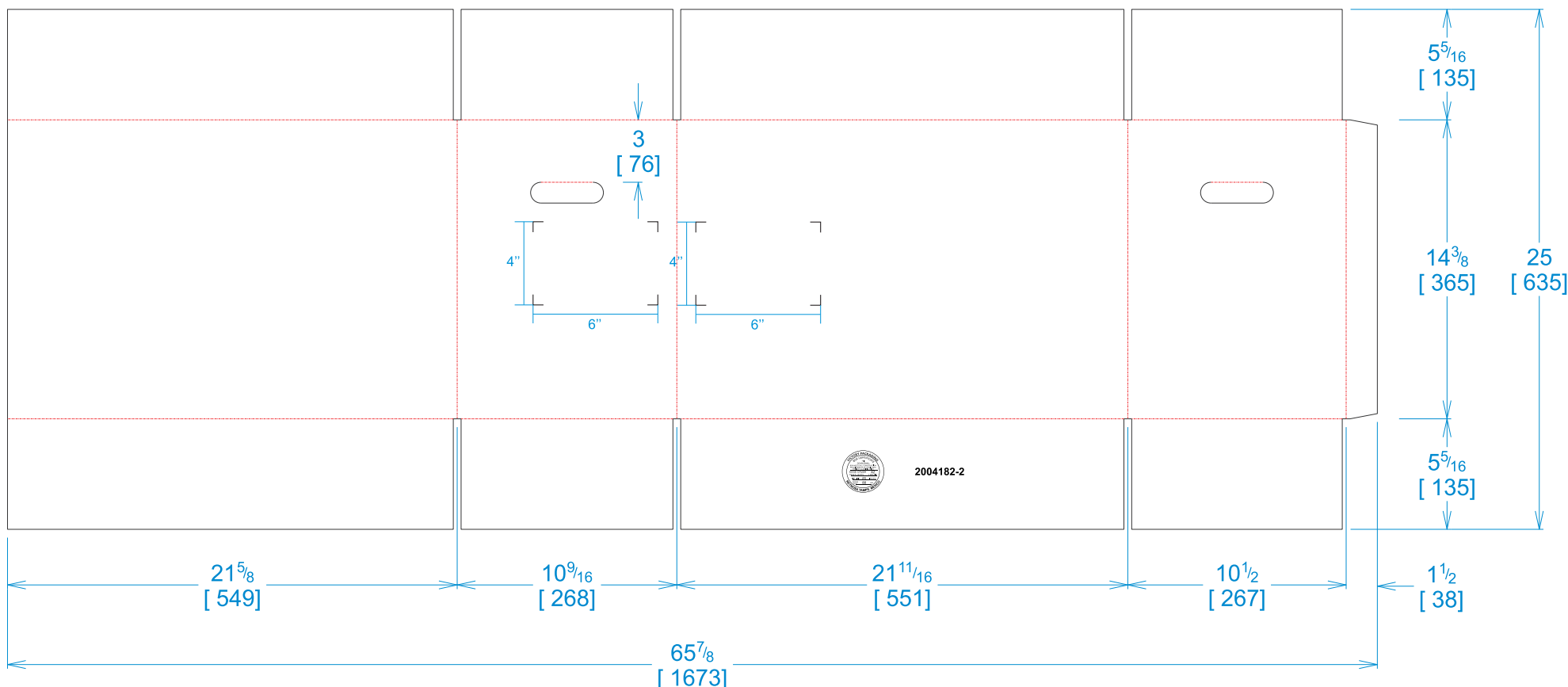


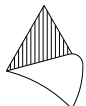
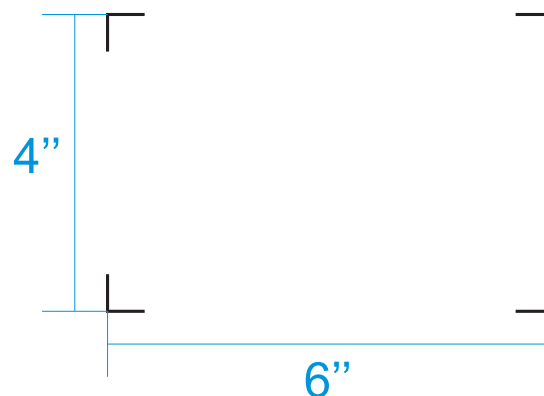


National Account Package Engineering
engsupport@victorypackaging.com
www.victorypackaging.com

CUSTOMER:	Key Safety Systems	ID:	21+3/8 x 10+1/4 x 13+3/4	ENGINEER:	Gerrardo Arrambide	DESIGN #:	D12979003	0
ITEM:	KSS-2004182-2A	BLANK SIZE:	25 x 65+7/8	SALES REP:	Luis Coo			
CUST PROD. #:		SQ FT:	11.44	JOINT:	Glued In	DR #:	M201-00017	
STYLE:	RSC	WASTE (%):	1.83	CORR DIRECTION:	Vertical	PRINT DATE:	01/21/2020	
MATERIAL:	42 ECT BC Kraft	RULE TOTAL IN:	444.955	PROJECT NAME:	M201-00017 KSS	VIEW:	outside	
MATERIAL NOTES:				GENERAL NOTES:				



2004182-2



Vertical Corrugation

Print Status: Printed
Colors: GCM1 90 Black

General Tolerances unless otherwise noted:			
Die Cut Corrugated Flat:	+/- 1/16	Pad/Block location:	+/- 1/8 Wood Block: +/- 1/4
Die Cut Corrugated Rotarv:	+/- 3/16	Pad/Sheet:	+/- 1/8 Foam Block: +/- 3/16

Specification Release
Approved for Production:

YES