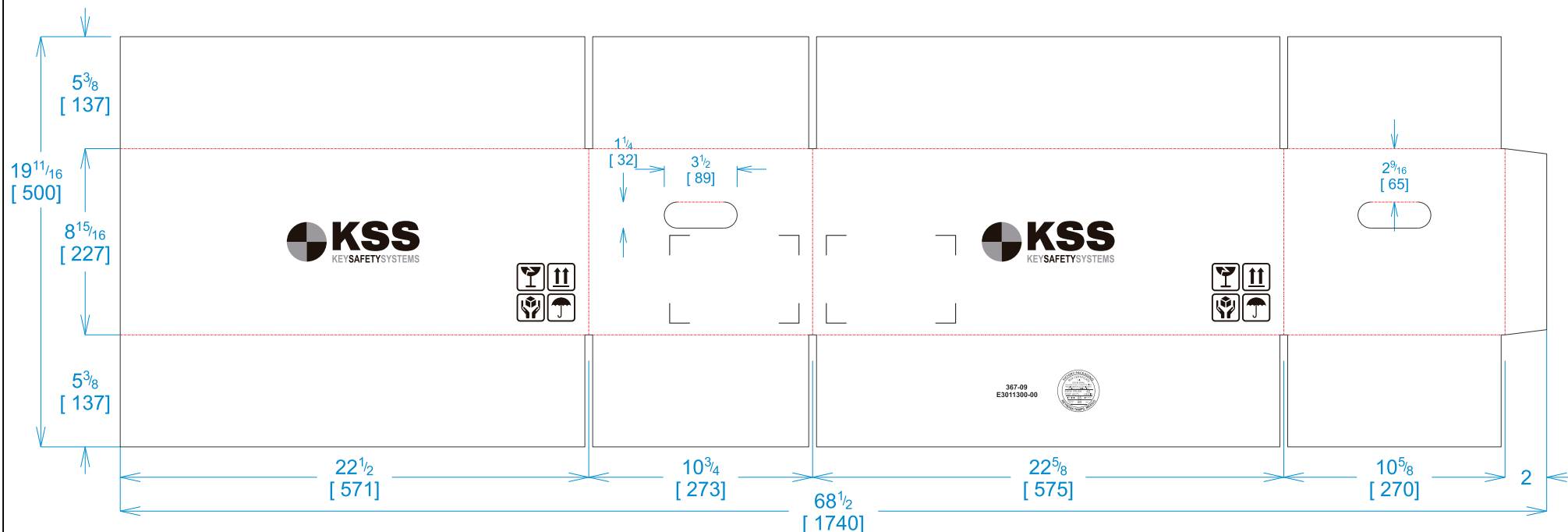




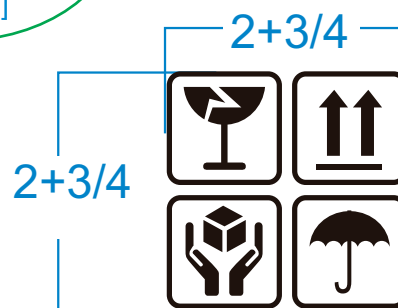
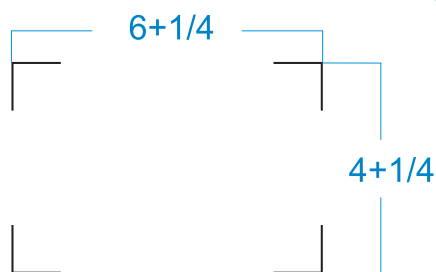
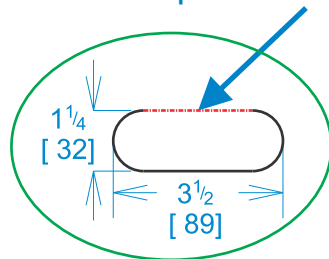
**Victory Packaging**

National Account Package Engineering  
engsupport@victorypackaging.com  
www.victorypackaging.com

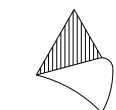
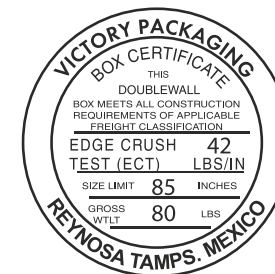
<b>CUSTOMER:</b> Key Safety Systems	<b>ID:</b> 22+5/16 x 10+7/16 x 8+3/8	<b>ENGINEER:</b> Gerrardo Arrambide	<b>DESIGN #:</b> <b>D12963274</b>	<b>0</b>
<b>ITEM:</b> KSS-E3011300-00	<b>BLANK SIZE:</b> 19+11/16 x 68+1/2	<b>SALES REP:</b> Luis Coo		
<b>CUST PROD. #:</b>	<b>SQ. FT.:</b> 9.37	<b>JOINT:</b> Glued In	<b>DR #:</b> M131-00951 rev. 2	
<b>STYLE:</b> RSC	<b>WASTE (%):</b> 2.68	<b>CORR DIRECTION:</b> Vertical	<b>PRINT DATE:</b> 07/01/2019	
<b>MATERIAL:</b> 42 ECT BC Kraft	<b>RULE TOTAL IN:</b> 423.385	<b>PROJECT NAME:</b> KEY SAFETY*	<b>VIEW:</b> outside	
<b>MATERIAL NOTES:</b>		<b>GENERAL NOTES:</b>		



pleca de marcado



**367-09**  
**E3011300-00**



Vertical Corrugation

<b>Print Status:</b> Printed
<b>Colors:</b> GCM1 90 BLACK

General Tolerances unless otherwise noted:			
Die Cut Corrugated Flat:	+/- 1/16	Pad/Block location:	+/- 1/8
Die Cut Corrugated Rotary:	+/- 3/16	Pad/Sheet:	+/- 1/8
		Wood Block:	+/- 1/4
		Foam Block:	+/- 3/16

**Specification Release**  
**Approved for Production:**

**Yes**