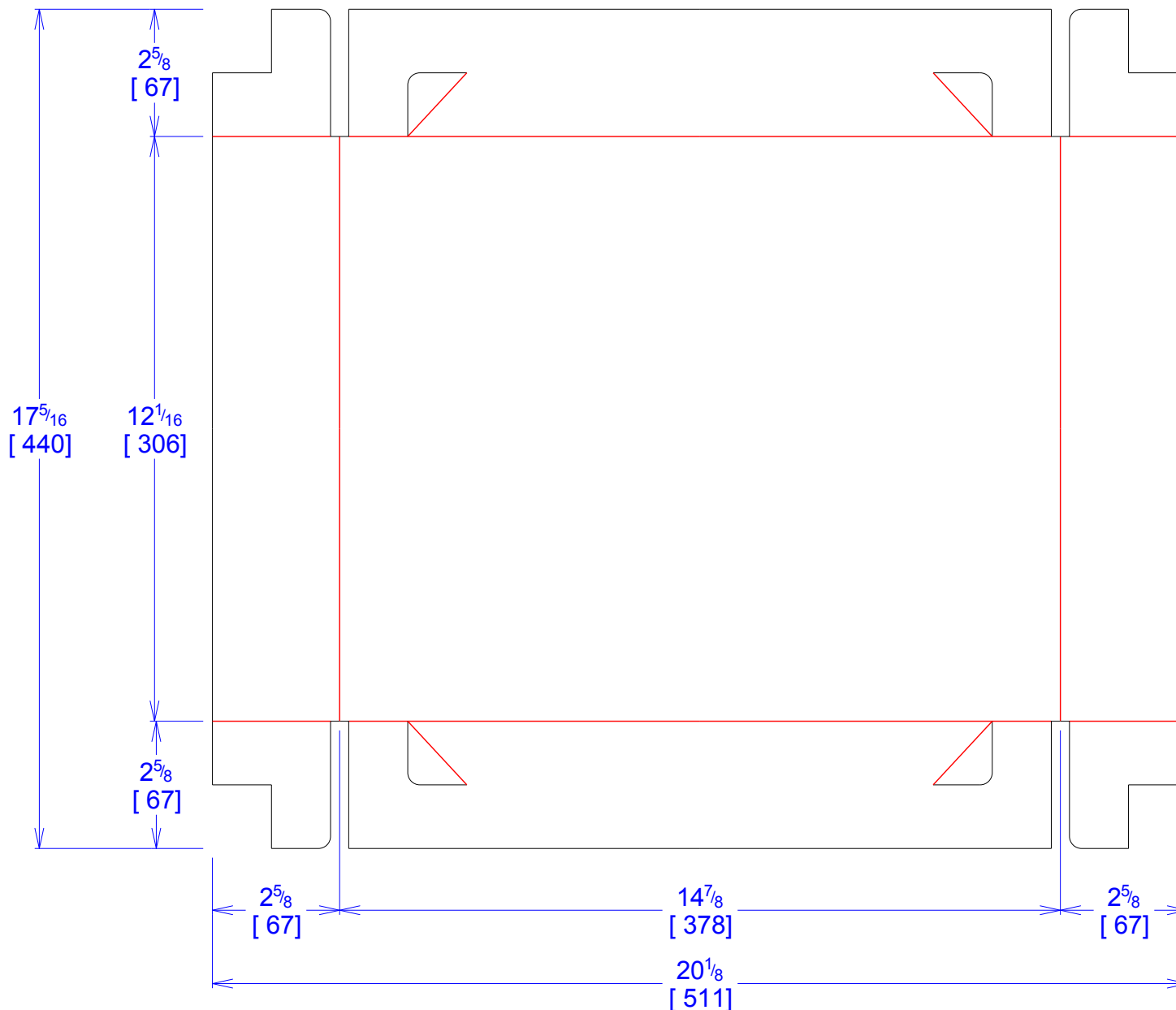




National Account Package Engineering
engsupport@victorypackaging.com
www.victorypackaging.com

CUSTOMER:	Kimball Electronics	ID:	14+11/16 x 11+11/16 x 2+1/2	ENGINEER:	Carlos Salinas	DESIGN #:	D12957490	0
ITEM:	KIM-KCM24255	BLANK SIZE:	17+5/16 x 20+1/8	SALES REP:	Luis Co	DR #:	M192-00075	
CUST PROD. #:	KCM24255	SQ FT:	2.42	JOINT:	None	PRINT DATE:	12/16/2019	
STYLE:	TRAY	WASTE (%):	2.98	CORR DIRECTION:	Vertical	VIEW:	outside	
MATERIAL:	32 ECT C Kraft	RULE TOTAL IN:	175.181	PROJECT NAME:	M192-00075 Kimball			
MATERIAL NOTES:				GENERAL NOTES:				



Vertical Corrugation

Print Status:	Plain
Colors:	

General Tolerances unless otherwise noted:			
Die Cut Corrugated Flat:	+/- 1/16	Pad/Block location:	+/- 1/8
Die Cut Corrugated Rotary:	+/- 3/16	Pad/Sheet:	+/- 1/8
		Wood Block:	+/- 1/4
		Foam Block:	+/- 3/16

Specification Release
Approved for Production:

Yes