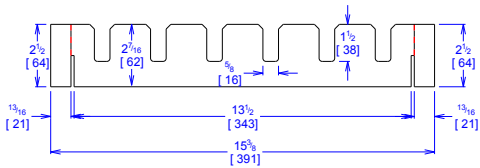
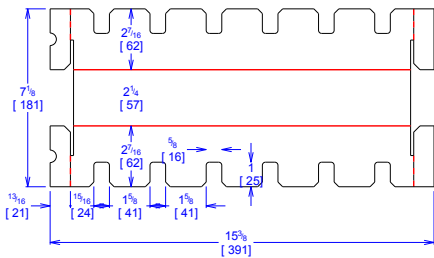


| | | | | | | | | |
|-----------------|-----------------------------|---------------|-------------------------|-----------------|--------------------|-------------|------------------|----------|
| CUSTOMER: | Kimball Electronics | Overall Size: | 29+3/8 x 19+3/8 x 2+1/2 | ENGINEER: | Carlos Salinas | DESIGN #: | D12975393 | 0 |
| ITEM: | KIM-KCM24243 | | | SALES REP: | Luis Coa | | | |
| CUST PROD. #: | KCM-24243 | | | JOINT: | Assembly | DR #: | M192-00076 REV 2 | |
| STYLE: | DC | | | CORR DIRECTION: | Vertical | PRINT DATE: | 12/09/2019 | |
| MATERIAL: | 32 ECT B Kraft | | | KIT: | M192-00076 KIMBALL | VIEW: | outside | |
| MATERIAL NOTES: | RECUBRIENTO ESD PARTE B Y C | | | GENERAL NOTES: | | | | |

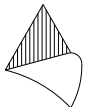
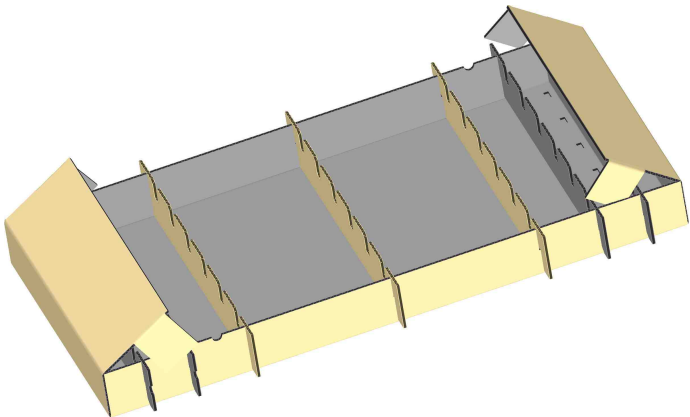
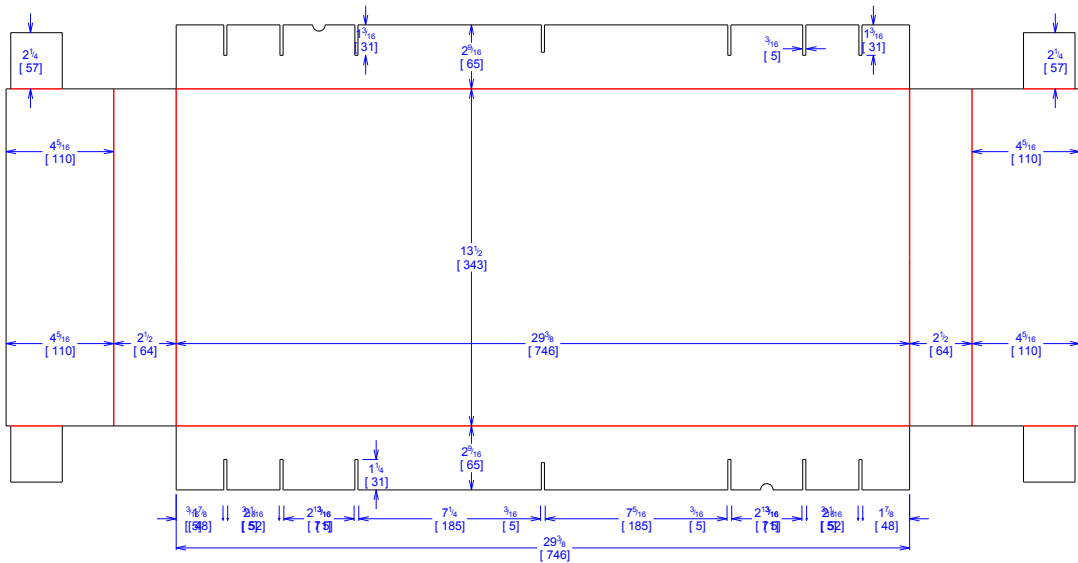
PARTE A
3 REQ



PARTE B
2 REQ
CORRUGADO NEGRO ESD AMBOS LADOS



PARTE C
1 REQ
CORRUGADO NEGRO ESD INTERIOR



Vertical Corrugation

Print Status:

Colors:

| General Tolerances unless otherwise noted: | | | | | |
|--|----------|---------------------|---------|-------------|----------|
| Die Cut Corrugated Flat: | +/- 1/16 | Pad/Block location: | +/- 1/8 | Wood Block: | +/- 1/4 |
| Die Cut Corrugated Rotary: | +/- 3/16 | Pad/Sheet: | +/- 1/8 | Foam Block: | +/- 3/16 |

Specification Release
Approved for Production:

Yes

Notice: The information contained in this drawing is the sole property of Victory Packaging. Any reproduction in part or as a whole without written permission is prohibited.

Form 7-E-90!