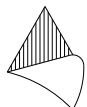
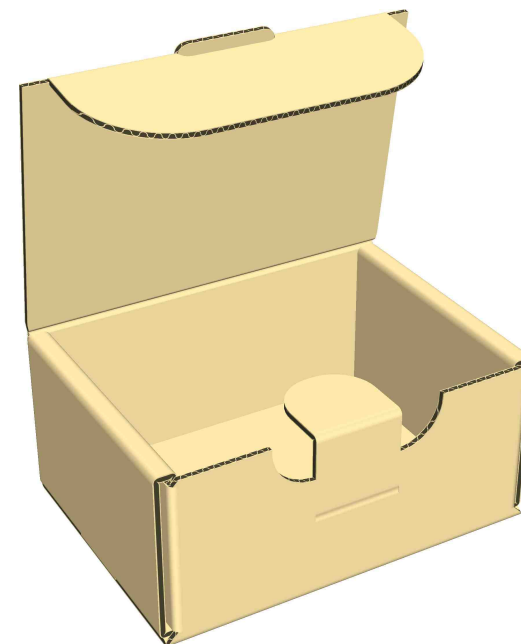
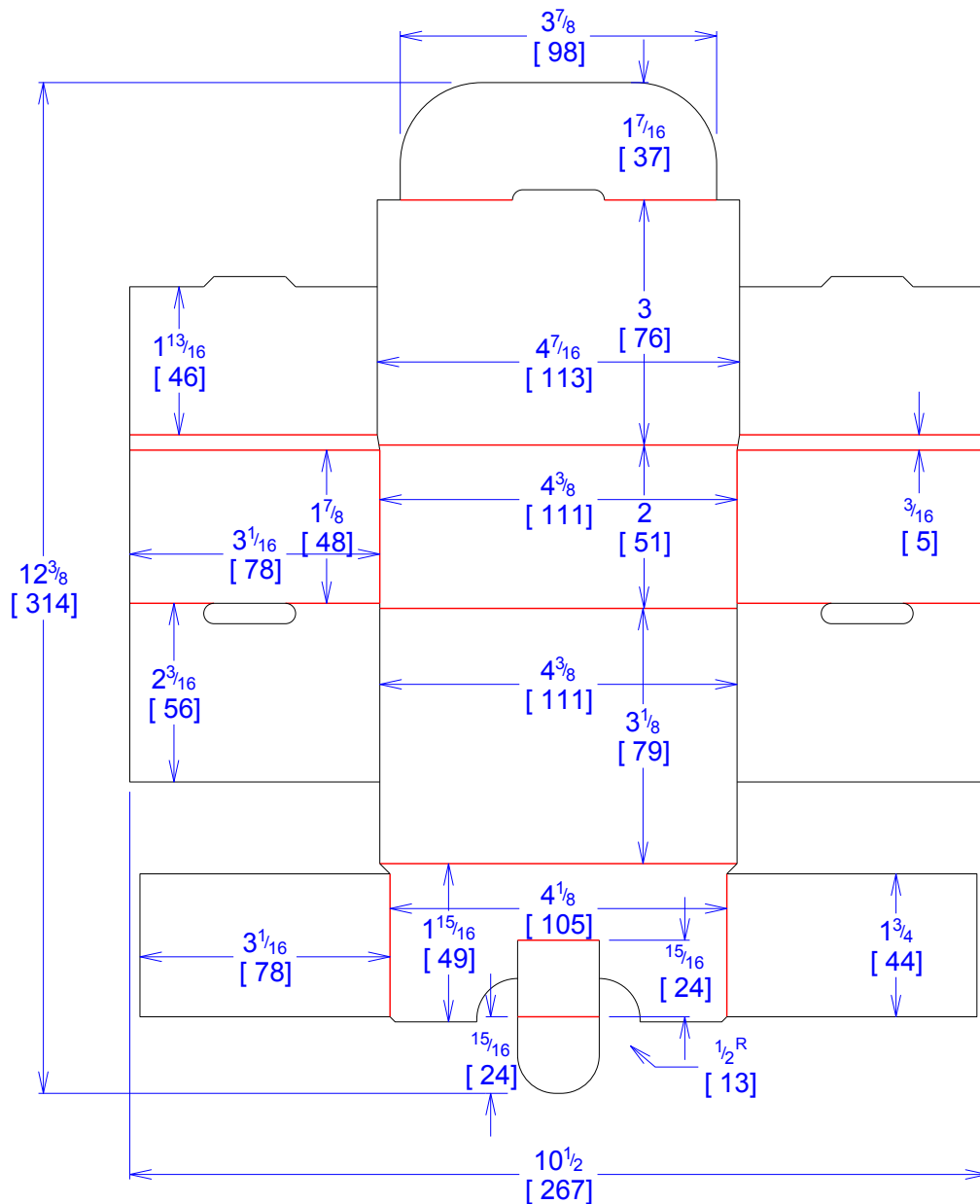




National Account Package Engineering  
engsupport@victorypackaging.com  
www.victorypackaging.com

CUSTOMER:	Kimball Electronics	ID:	3+7/8 x 2+7/8 x 1+13/16	ENGINEER:	Carlos Salinas	DESIGN #:	<b>D12960291</b>	<b>0</b>
ITEM:	KIM-KCM16401	BLANK SIZE:	12+3/8 x 10+1/2	SALES REP:	Luis Coo	DR #:	M192-00585	
CUST PROD. #:	KCM16401	SQ FT:	0.9	JOINT:	None	PRINT DATE:	11/06/2019	
STYLE:	D/C	WASTE (%):	25.18	CORR DIRECTION:	Vertical	VIEW:	outside	
MATERIAL:	32 ECT E Kraft	RULE TOTAL IN:	115.788	PROJECT NAME:	M192-00585 KIMBAL			
MATERIAL NOTES:				GENERAL NOTES:				



Vertical Corrugation

Print Status:	Plain
Colors:	

General Tolerances unless otherwise noted:

Die Cut Corrugated Flat:	+/- 1/16	Pad/Block location:	+/- 1/8	Wood Block:	+/- 1/4
Die Cut Corrugated Rotary:	+/- 3/16	Pad/Sheet:	+/- 1/8	Foam Block:	+/- 3/16

Specification Release  
Approved for Production:

Yes