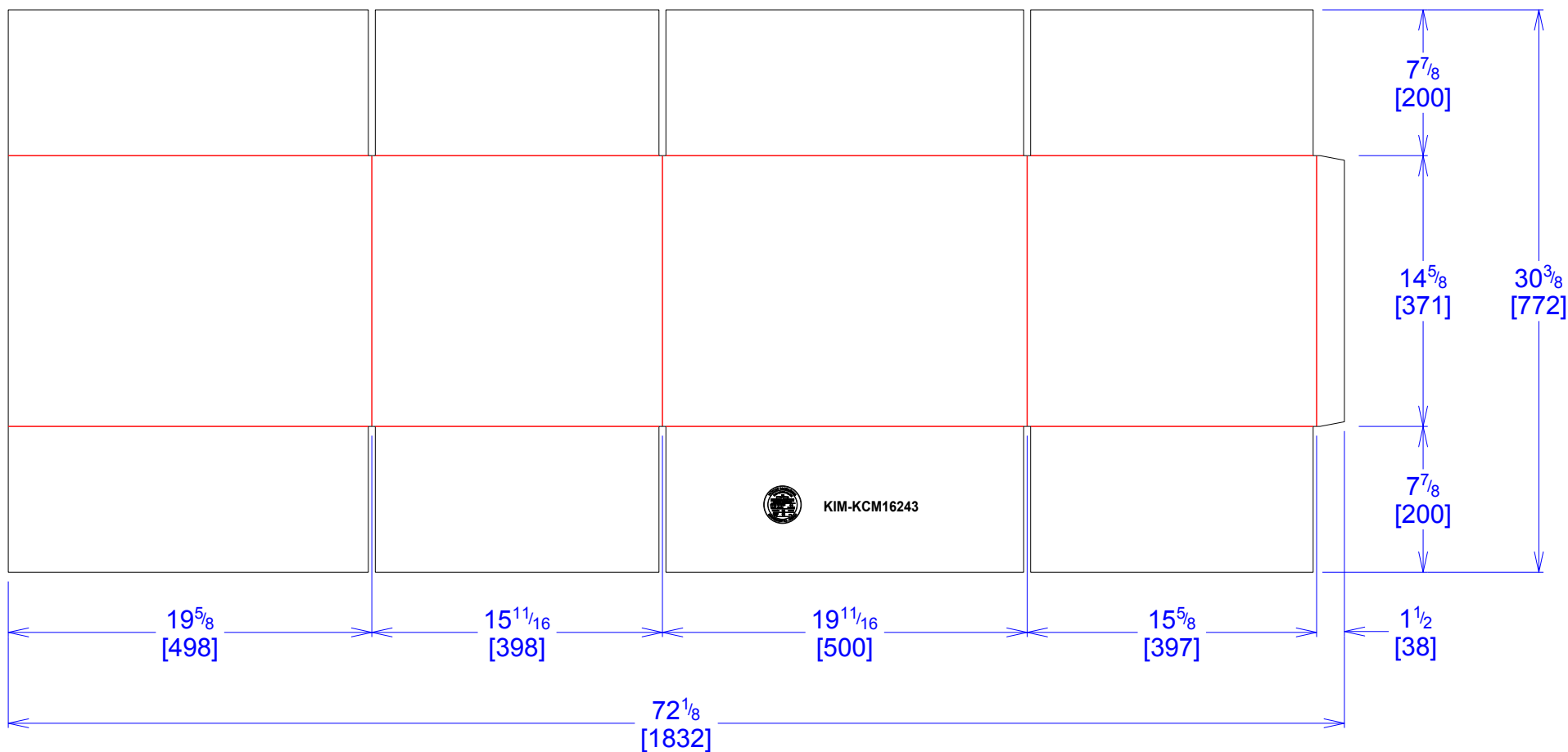




National Account Package Engineering
engsupport@victorypackaging.com
www.victorypackaging.com

CUSTOMER:	Kimball Electronics	ID:	19+1/2 x 15+1/2 x 14+1/4	ENGINEER:	Gerrardo Arrambide	DESIGN #:	D12941707	0
ITEM:	KIM-KCM16243	BLANK SIZE:	30+3/8 x 72+1/8	SALES REP:	Luis Coo	DR #:	M184-00050	
CUST PROD. #:	KCM16243	SQ FT:	15.21	JOINT:	Glued In	PRINT DATE:	03/21/2019	
STYLE:	RSC	WASTE (%):	2.04	CORR DIRECTION:	Vertical	VIEW:	outside	
MATERIAL:	44 ECT C Kraft	RULE TOTAL IN:	591.793	PROJECT NAME:	M184-00050			
MATERIAL NOTES:				GENERAL NOTES:				



Vertical Corrugation

Print Status:	ID and Cert
Colors:	

General Tolerances unless otherwise noted:					
Die Cut Corrugated Flat:	+/- 1/16	Pad/Block location:	+/- 1/8	Wood Block:	+/- 1/4
Die Cut Corrugated Rotary:	+/- 3/16	Pad/Sheet:	+/- 1/8	Foam Block:	+/- 3/16

Specification Release
Approved for Production:

Yes