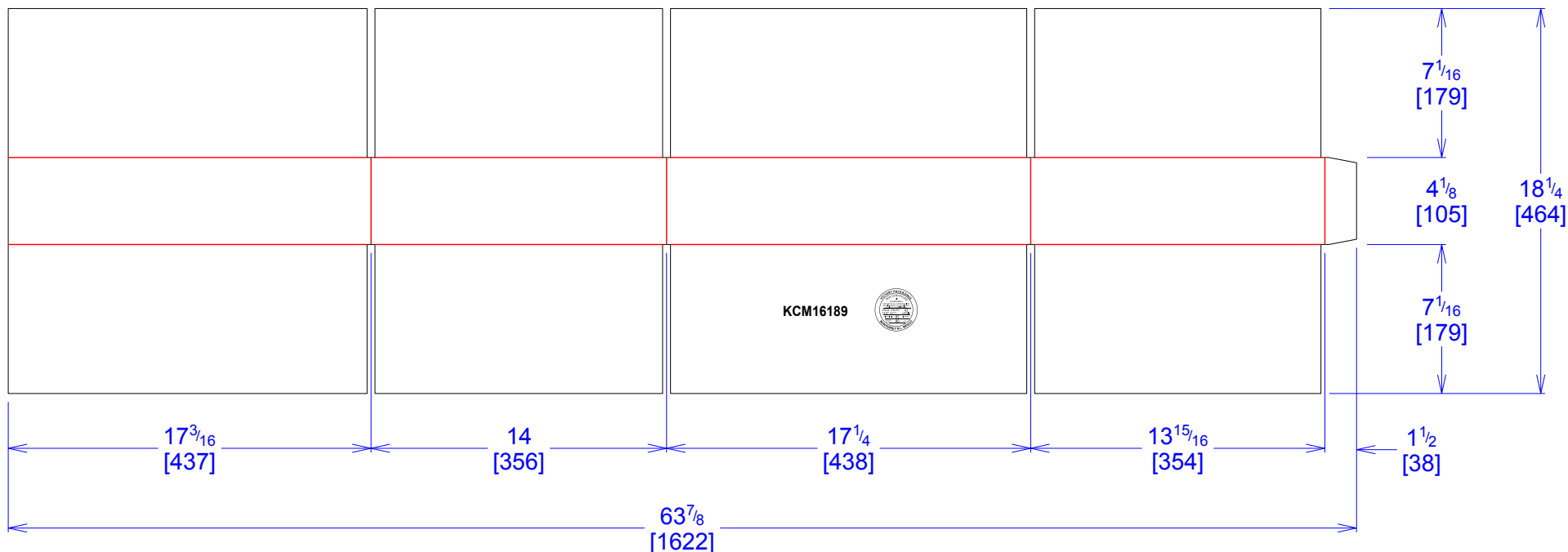




National Account Package Engineering  
engsupport@victorypackaging.com  
www.victorypackaging.com

CUSTOMER:	Kimball Electronics	ID:	16+15/16 x 13+11/16 x 3+1/2	ENGINEER:	Gerrardo Arrambide	DESIGN #:	<b>D12949692</b>	<b>0</b>
ITEM:	KIM-KCM16189	BLANK SIZE:	18+1/4 x 63+7/8	SALES REP:	Luis Coo	DR #:	M191-00219	
CUST PROD. #:	KCM16189	SQ FT:	8.1	JOINT:	Glued In	PRINT DATE:	02/13/2019	
STYLE:	RSC	WASTE (%):	3.44	CORR DIRECTION:	Vertical	VIEW:	outside	
MATERIAL:	42 ECT BC Kraft	RULE TOTAL IN:	387+11/64	PROJECT NAME:	M191-00219 Kimball			
MATERIAL NOTES:				GENERAL NOTES:				



Vertical Corrugation

Print Status:	ID and Cert
Colors:	

General Tolerances unless otherwise noted:			
Die Cut Corrugated Flat:	+/- 1/16	Pad/Block location:	+/- 1/8
Die Cut Corrugated Rotary:	+/- 3/16	Pad/Sheet:	+/- 1/8
Wood Block:	+/- 1/4	Foam Block:	+/- 3/16

Specification Release  
Approved for Production:

**Yes**