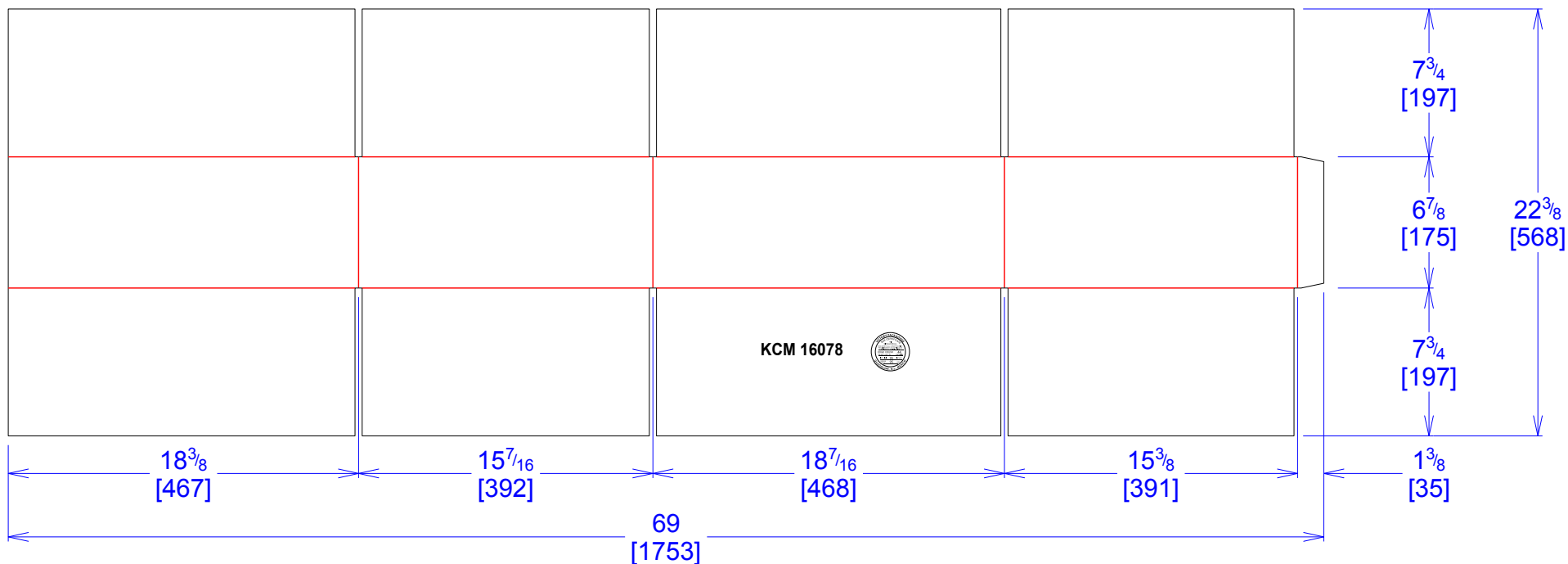




National Account Package Engineering
engsupport@victorypackaging.com
www.victorypackaging.com

CUSTOMER:	Kimball Electronics	ID:	18+1/4 x 15+1/4 x 6+1/2	ENGINEER:	Gerrardo Arrambide	DESIGN #:	D12945182	0
ITEM:	KIM-KCM 16078 RSC	BLANK SIZE:	22+3/8 x 69	SALES REP:	Luis Coo	DR #:	M181-00586	
CUST PROD. #:	KCM 16078	SQ FT:	10.72	JOINT:	Glued In	PRINT DATE:	01/17/2019	
STYLE:	RSC	WASTE (%):	2.72	CORR DIRECTION:	Vertical	VIEW:	outside	
MATERIAL:	44 ECT C Kraft	RULE TOTAL IN:	435.427	PROJECT NAME:	M181-00586 KIMBALL			
MATERIAL NOTES:				GENERAL NOTES:				



Vertical Corrugation

Print Status:	ID and Cert
Colors:	

General Tolerances unless otherwise noted:			
Die Cut Corrugated Flat:	+/- 1/16	Pad/Block location:	+/- 1/8
Die Cut Corrugated Rotary:	+/- 3/16	Pad/Sheet:	+/- 1/8
Wood Block:	+/- 1/4	Foam Block:	+/- 3/16

Specification Release
Approved for Production:

Yes