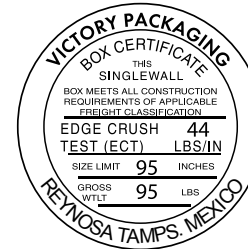
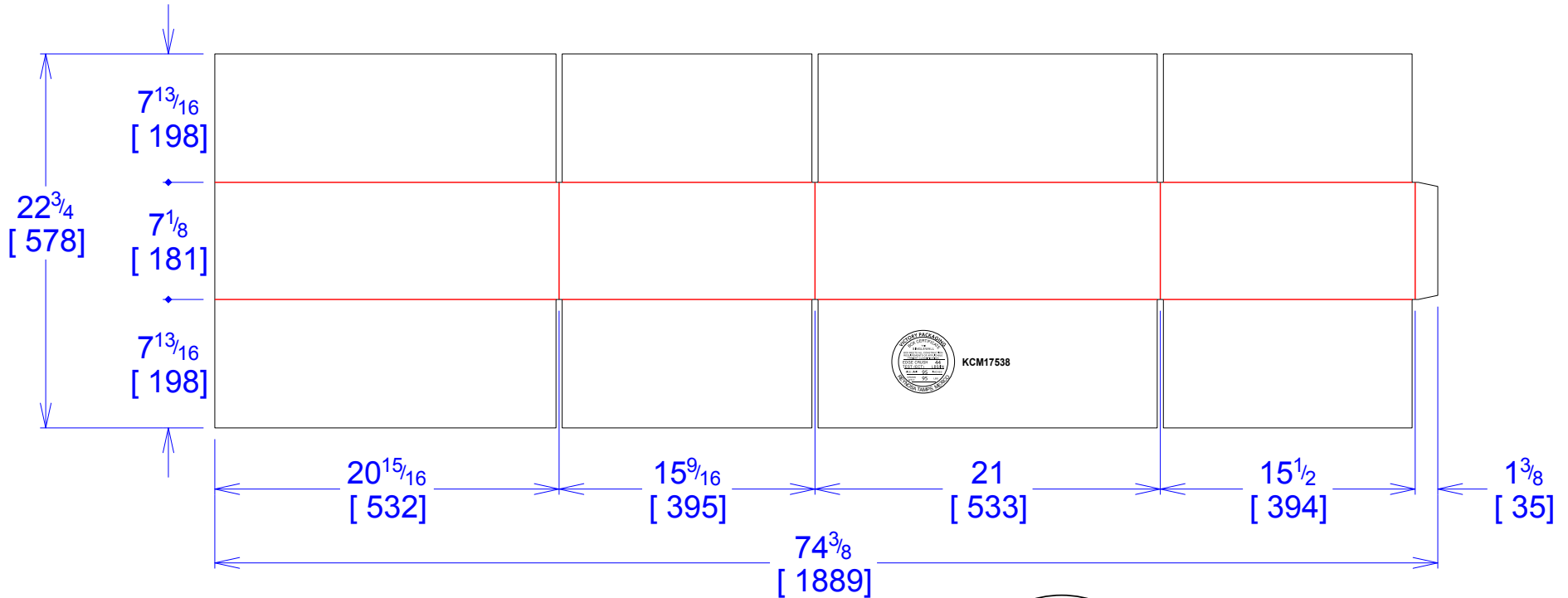


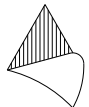


National Account Package Engineering
engsupport@victorypackaging.com
www.victorypackaging.com

CUSTOMER:	Kimball Electronics	ID:	20+13/16 x 15+3/8 x 6+3/4	ENGINEER:	Carlos Salinas	DESIGN #:	D12994286	0
ITEM:	KIM-KCM17538	BLANK SIZE:	22+3/4 x 74+3/8	SALES REP:	Luis Coo	DR #:	M203-00430	
CUST PROD. #:	BRO-KCM17538	SQ FT:	11.75	JOINT:	Glued In	PRINT DATE:	09/29/2020	
STYLE:	RSC	WASTE (%):	2.5	CORR DIRECTION:	Vertical	VIEW:	outside	
MATERIAL:	44 ECT C Kraft	RULE TOTAL IN:	459.427	PROJECT NAME:	M203-00430 KIMBAL			
MATERIAL NOTES:				GENERAL NOTES:				



KCM17538



Vertical Corrugation

Print Status:	ID and Cert
Colors:	

General Tolerances unless otherwise noted:			
Die Cut Corrugated Flat:	+/- 1/16	Pad/Block location:	+/- 1/8
Die Cut Corrugated Rotary:	+/- 3/16	Pad/Sheet:	+/- 1/8
		Wood Block:	+/- 1/4
		Foam Block:	+/- 3/16

Specification Release
Approved for Production:

Yes