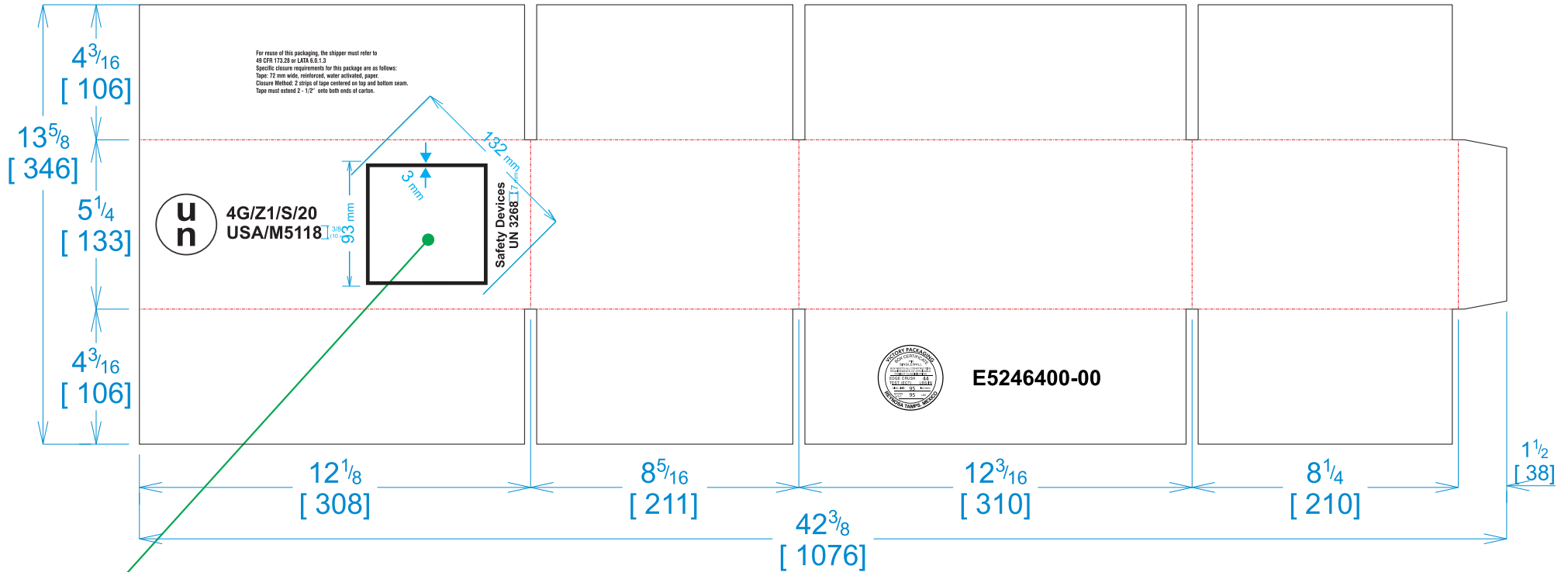




National Account Package Engineering
engsupport@victorypackaging.com
www.victorypackaging.com

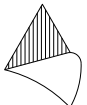
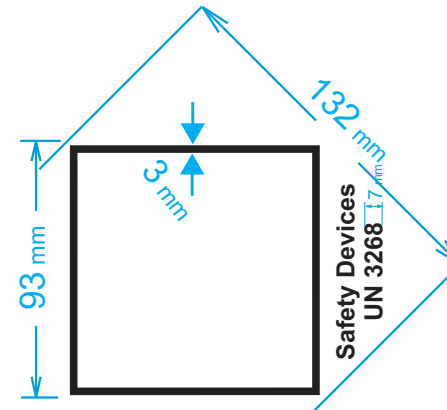
CUSTOMER:	Key Safety Systems	ID:	12 x 8+1/8 x 4+7/8	ENGINEER:	Gerrardo Arrambide	DESIGN #:	D13001209	0
ITEM:	HZMTRAWKSS-E5246400-00	BLANK SIZE:	13+5/8 x 42+3/8	SALES REP:	Luis Coo	DR #:	M191-00844	
CUST PROD. #:		SQ FT:	4.01	JOINT:	Glued In	PRINT DATE:	11/11/2020	
STYLE:	RSC	WASTE (%):	4.14	CORR DIRECTION:	Vertical	PROJECT NAME:	M201-00848 KSS	
MATERIAL:	44 ECT C Kraft	RULE TOTAL IN:	261+59/64	PROJ NAME:	M201-00848 KSS	VIEW:	outside	
MATERIAL NOTES:	44 ECT C 42/33/42	GENERAL NOTES:	REF. DR. M191-00844 DESIGN # D12955397					



4G/Z1/S/20
USA/M5118 $\frac{3}{8}$
(10 mm)

E5246400-00

For reuse of this packaging, the shipper must refer to
49 CFR 173.28 or LATA 6.0.1.3
Specific closure requirements for this package are as follows:
Tape: 72 mm wide, reinforced, water activated, paper.
Closure Method: 2 strips of tape centered on top and bottom seam.
Tape must extend 2 - 1/2" onto both ends of carton.



Vertical Corrugation

Print Status:	Printed
Colors:	GCM1 90 Black

General Tolerances unless otherwise noted:			
Die Cut Corrugated Flat:	+/- 1/16	Pad/Block location:	+/- 1/8
Die Cut Corrugated Rotary:	+/- 3/16	Pad/Sheet:	+/- 1/8
		Wood Block:	+/- 1/4
		Foam Block:	+/- 3/16

Specification Release
Approved for Production:

YES