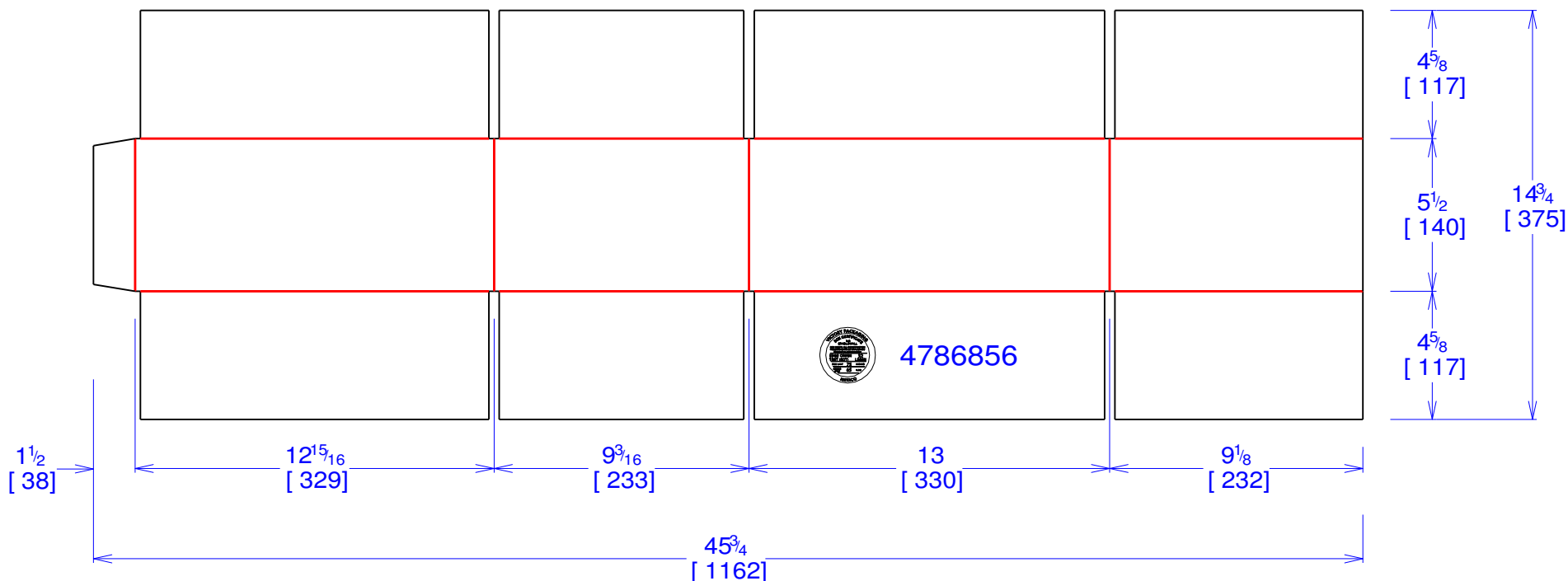




National Account Package Engineering
engsupport@victorypackaging.com
www.victorypackaging.com

CUSTOMER:	Autoliv	ID:	12+13/16 x 9 x 5+1/8	ENGINEER:	Joe Alvarado	DESIGN #:	2140011037	0
ITEM:	4786856	BLANK SIZE:	14+3/4 x 45+3/4	SALES REP:	Abraham Chacra	DR #:	M121-00446	
CUST PROD. #:	4786856	SQ FT:	4.686	JOINT:	Glued In	DESIGN DATE:	18/07/2012	
STYLE:	RSC	WASTE (%):	3.91	CORR DIRECTION:	Vertical	VIEW:	inside	Units IN
MATERIAL:	32 ECT C Kraft	RULE TOTAL IN:	283.916	KIT:				
MATERIAL NOTES:				GENERAL NOTES:				



Vertical Corrugation

Print Status: ID and Cert
Colors:

General Tolerances unless otherwise noted:			
Die Cut Corrugated Flat:	+/- 1/16	Pad/Block location:	+/- 1/8
Die Cut Corrugated Rotary:	+/- 3/16	Pad/Sheet:	+/- 1/8
Wood Block:	+/- 1/4	Foam Block:	+/- 3/16

Specification Release
Approved for Production:

Yes