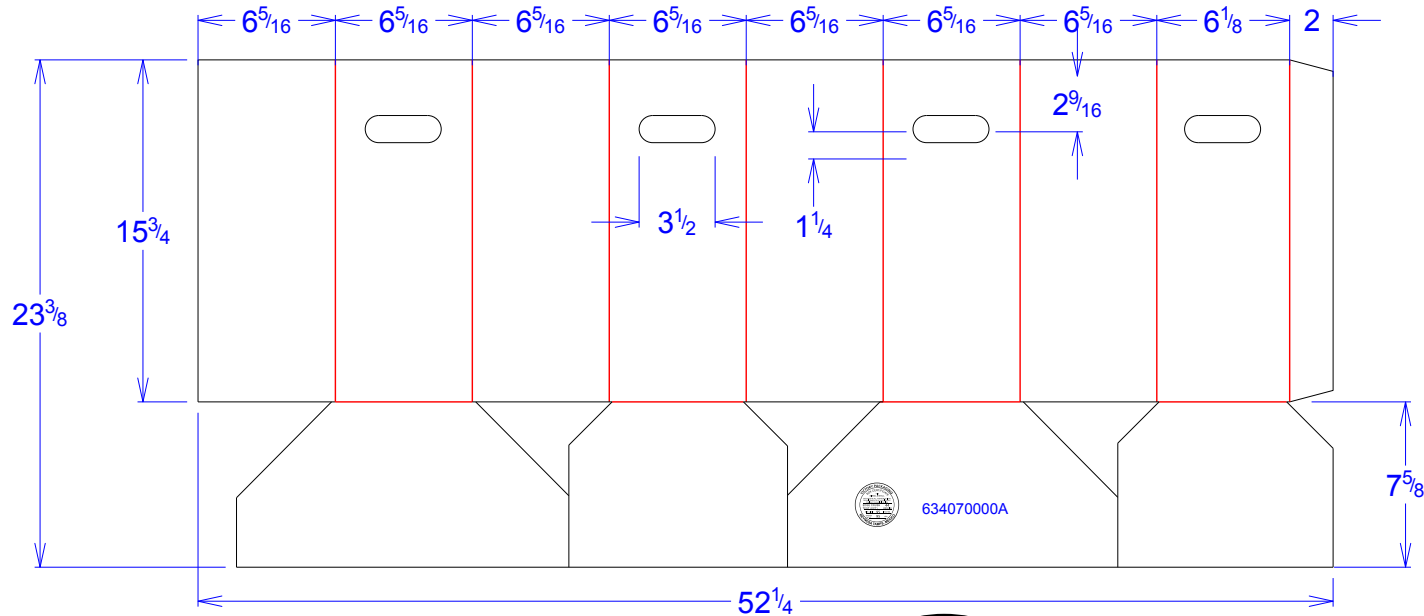


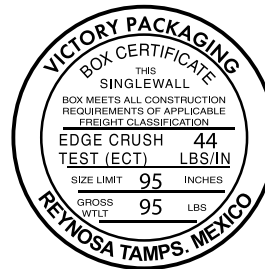
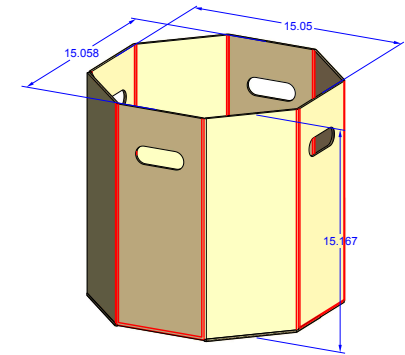


National Account Package Engineering
engsupport@victorypackaging.com
www.victorypackaging.com

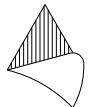
CUSTOMER:	Autoliv	ID:	15+1/16 x 15+1/16 x 15+3/4	ENGINEER:	Franco Gonzalez	DESIGN #:	D12851465	0
ITEM:	634070000A	BLANK SIZE:	23.364 x 52.273	SALES REP:	Antonio Garcia	DR #:	M151-00108	
CUST PROD. #:		SQ FT:	8.48	JOINT:	Glued In	PRINT DATE:	01/06/2016	
STYLE:	tube	WASTE (%):	2.17	CORR DIRECTION:	Vertical	VIEW:	outside	
MATERIAL:	44 ECT C Kraft	RULE TOTAL IN:	407.013	KIT:	AUTOLIV-M154-00893			
MATERIAL NOTES:				GENERAL NOTES:				



Dimension Exterior



634070000A



Vertical Corrugation

Print Status:	ID and Cert
Colors:	

General Tolerances unless otherwise noted:					
Die Cut Corrugated Flat:	+/- 1/16	Pad/Block location:	+/- 1/8	Wood Block:	+/- 1/4
Die Cut Corrugated Rotary:	+/- 3/16	Pad/Sheet:	+/- 1/8	Foam Block:	+/- 3/16

Specification Release
Approved for Production:

YES