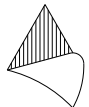
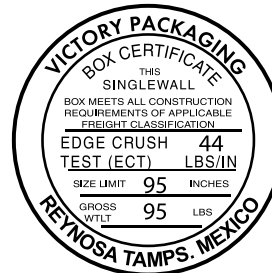
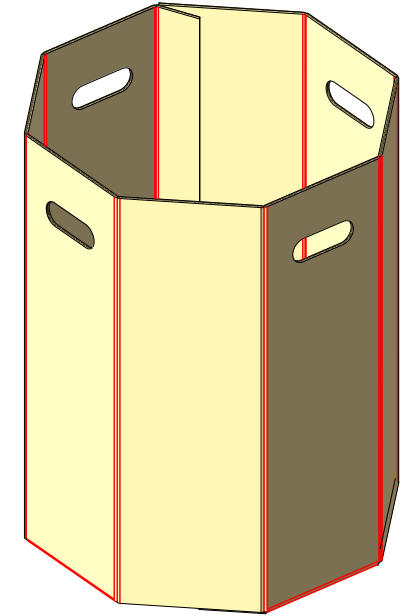
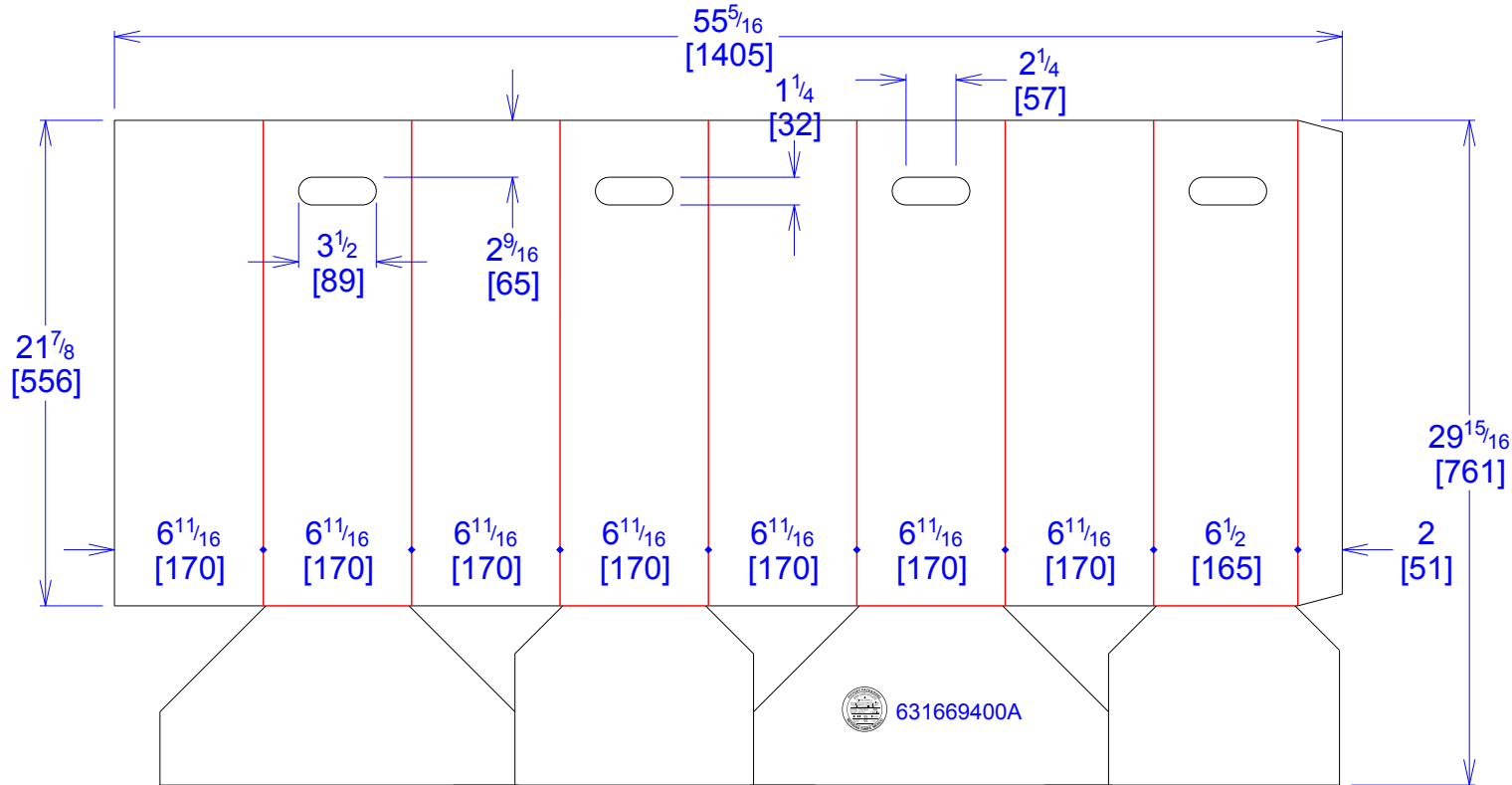




National Account Package Engineering
engsupport@victorypackaging.com
www.victorypackaging.com

CUSTOMER: Autoliv	ID: 15+15/16 x 15+15/16 x 21+3/8	ENGINEER: Alejandro Diaz	DESIGN #: D12801580	0
ITEM: 631669400A	BLANK SIZE: 29+15/16 x 55+5/16	SALES REP: Antonio Garcia	DR #: M142-00359 rev. 3	
CUST PROD. #:	SQ FT: 11.5	JOINT: Glued In	PRINT DATE: 06/16/2014	
STYLE: tube	WASTE (%): 1.85	CORR DIRECTION: Vertical	VIEW: outside	
MATERIAL: 44 ECT C Kraft	RULE TOTAL IN: 490	KIT: AUTOLIV-M142-00359-VW		
MATERIAL NOTES:		GENERAL NOTES:		



Vertical Corrugation

Print Status: ID and Cert
Colors:

General Tolerances unless otherwise noted:					
Die Cut Corrugated Flat:	+/- 1/16	Pad/Block location:	+/- 1/8	Wood Block:	+/- 1/4
Die Cut Corrugated Rotary:	+/- 3/16	Pad/Sheet:	+/- 1/8	Foam Block:	+/- 3/16

Specification Release
Approved for Production:

YES