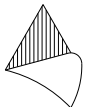
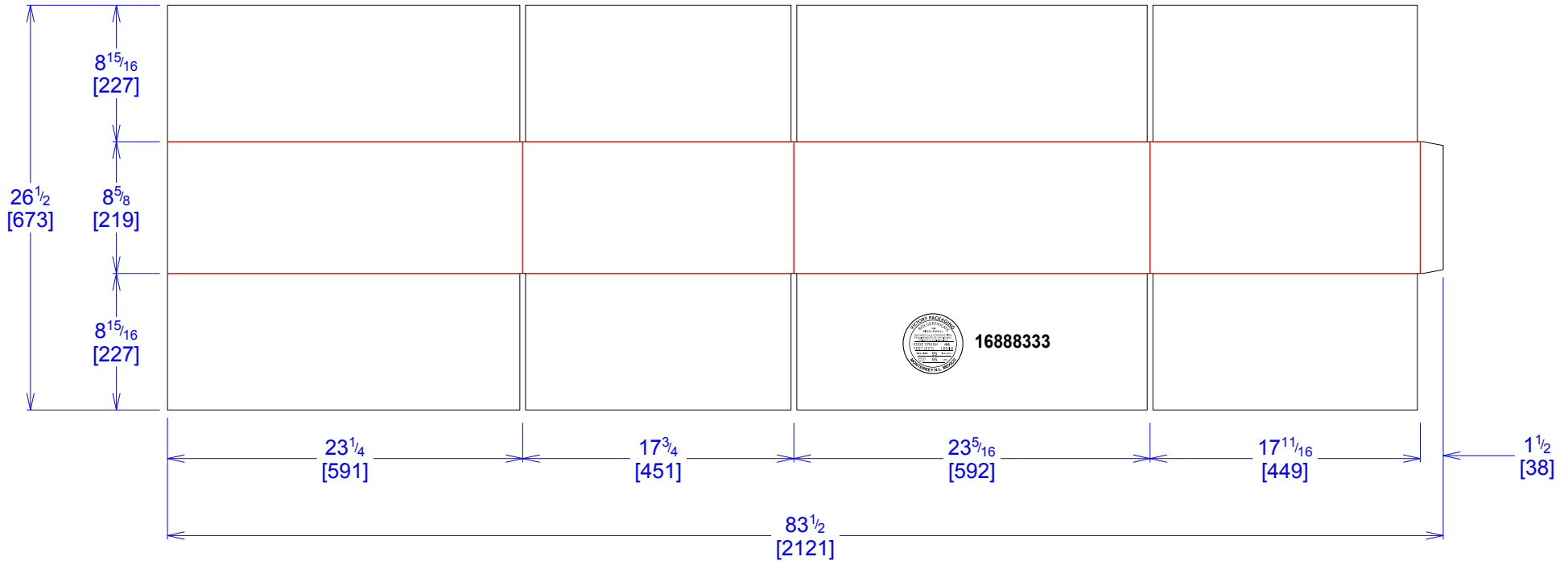




National Account Package Engineering
engsupport@victorypackaging.com
www.victorypackaging.com

CUSTOMER:	Inteva	ID:	23+1/8 x 17+9/16 x 8+1/4	ENGINEER:	Gerrardo Arrambide	DESIGN #:	D12991139	0
ITEM:	DSI16888333	BLANK SIZE:	26+1/2 x 83+1/2	SALES REP:	Veronica Bravo	DR #:	M203-00036	
CUST PROD. #:		SQ FT:	15.37	JOINT:	Glued In	PRINT DATE:	07/03/2020	
STYLE:	RSC	WASTE (%):	2.29	CORR DIRECTION:	Vertical	VIEW:	outside	
MATERIAL:	44 ECT C Kraft	RULE TOTAL IN:	522+43/64	PROJECT NAME:	M203-00036 INTEVA			
MATERIAL NOTES:				GENERAL NOTES:				



Vertical Corrugation

Print Status:	ID and Cert
Colors:	

General Tolerances unless otherwise noted:			
Die Cut Corrugated Flat:	+/- 1/16	Pad/Block location:	+/- 1/8
Die Cut Corrugated Rotary:	+/- 3/16	Pad/Sheet:	+/- 1/8
Wood Block:	+/- 1/4	Foam Block:	+/- 3/16

Specification Release
Approved for Production:

Yes