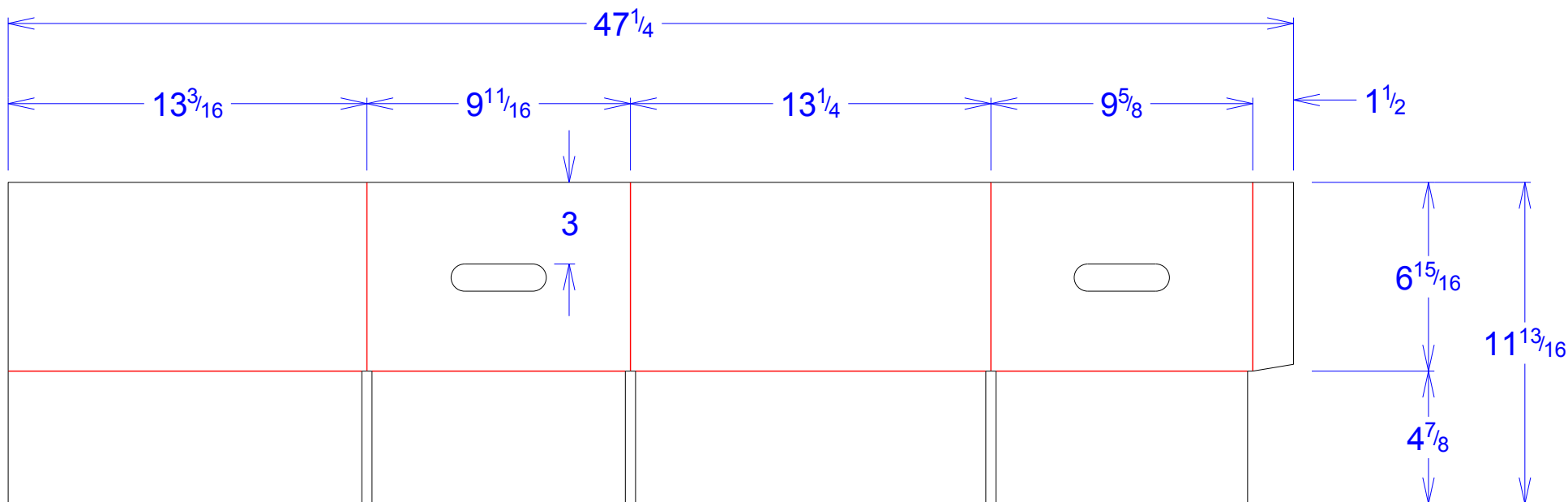




National Account Package Engineering
engsupport@victorypackaging.com
www.victorypackaging.com

CUSTOMER:	APTIV	ID:	12+15/16 x 9+3/8 x 6+5/8	ENGINEER:	Carlos Gonzalez	DESIGN #:	D12992804	0
ITEM:	DDE28725761	BLANK SIZE:	11+13/16 x 47+1/4	SALES REP:	Lisa Mcririe	DR #:	M201-00078	
CUST PROD. #:		SQ FT:	3.88	JOINT:	Glued In	PRINT DATE:	11/11/2020	
STYLE:	HSC	WASTE (%):	2.49	CORR DIRECTION:	Vertical	VIEW:	outside	
MATERIAL:	42 ECT BC Kraft	RULE TOTAL IN:	235.616	PROJECT NAME:	M201-00078 Aptiv			
MATERIAL NOTES:				GENERAL NOTES:				



Vertical Corrugation

Print Status:	ID and Cert
Colors:	

General Tolerances unless otherwise noted:					
Die Cut Corrugated Flat:	+/- 1/16	Pad/Block location:	+/- 1/8	Wood Block:	+/- 1/4
Die Cut Corrugated Rotary:	+/- 3/16	Pad/Sheet:	+/- 1/8	Foam Block:	+/- 3/16

Specification Release
Approved for Production:

Yes