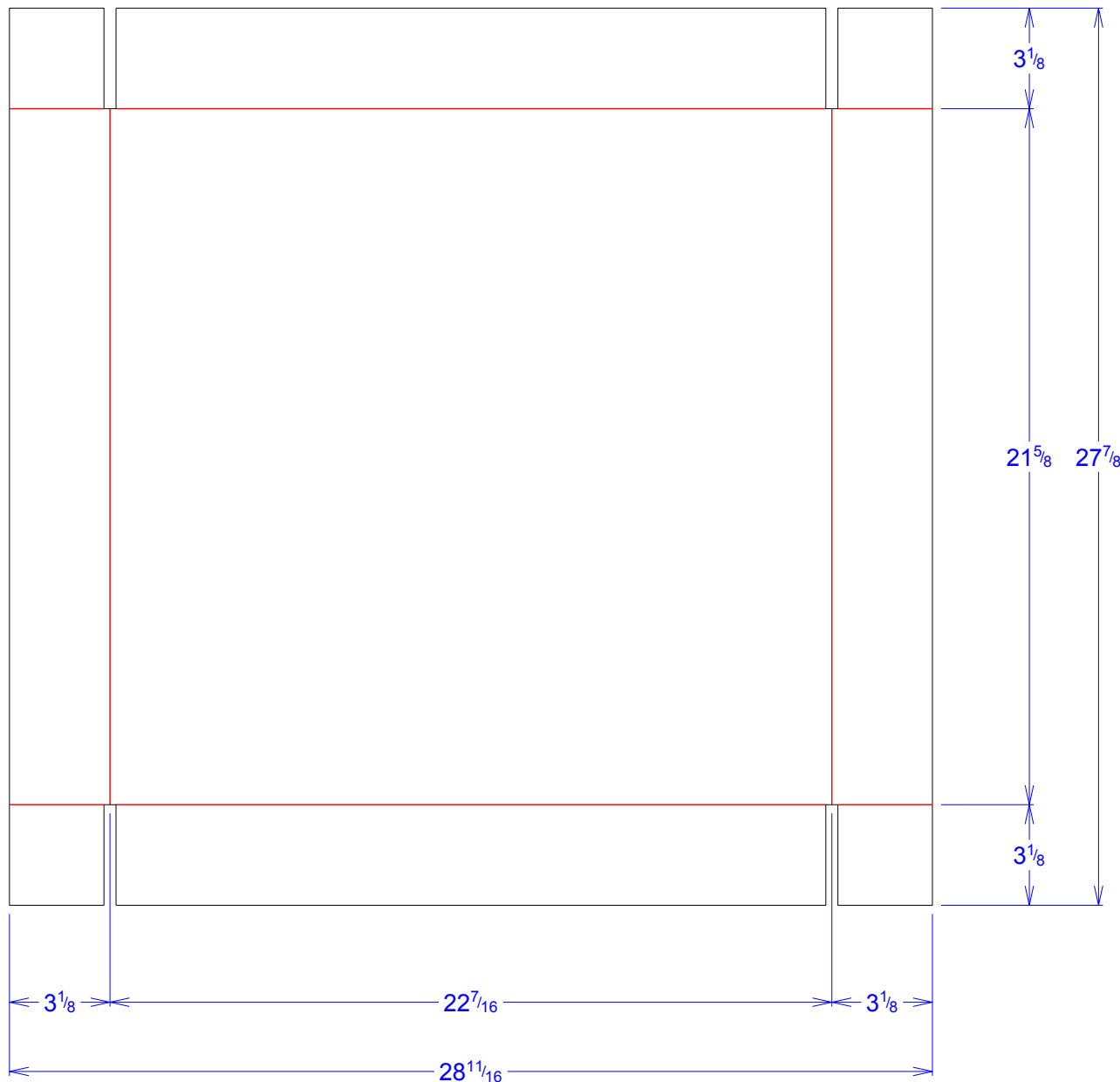




National Account Package Engineering
engsupport@victorypackaging.com
www.victorypackaging.com

CUSTOMER:	APTIV	ID:	22+1/4 x 21+1/4 x 3	ENGINEER:	Francisco Rios	DESIGN #:	D12973860	0
ITEM:	DDE28719824	BLANK SIZE:	27+7/8 x 28+11/16	SALES REP:	Lisa McCririe	DR #:	M192-00670	
CUST PROD. #:		SQ FT:	5.55	JOINT:	None	PRINT DATE:	03/09/2020	
STYLE:	Tray	WASTE (%):	0.59	CORR DIRECTION:	Vertical	VIEW:	outside	
MATERIAL:	32 ECT C Kraft	RULE TOTAL IN:	237+1/4	PROJECT NAME:	M192-00670 Aptiv	GENERAL NOTES:		
MATERIAL NOTES:								



Vertical Corrugation

Print Status:	Plain
Colors:	

General Tolerances unless otherwise noted:					
Die Cut Corrugated Flat:	+/- 1/16	Pad/Block location:	+/- 1/8	Wood Block:	+/- 1/4
Die Cut Corrugated Rotary:	+/- 3/16	Pad/Sheet:	+/- 1/8	Foam Block:	+/- 3/16

Specification Release
Approved for Production:

Yes