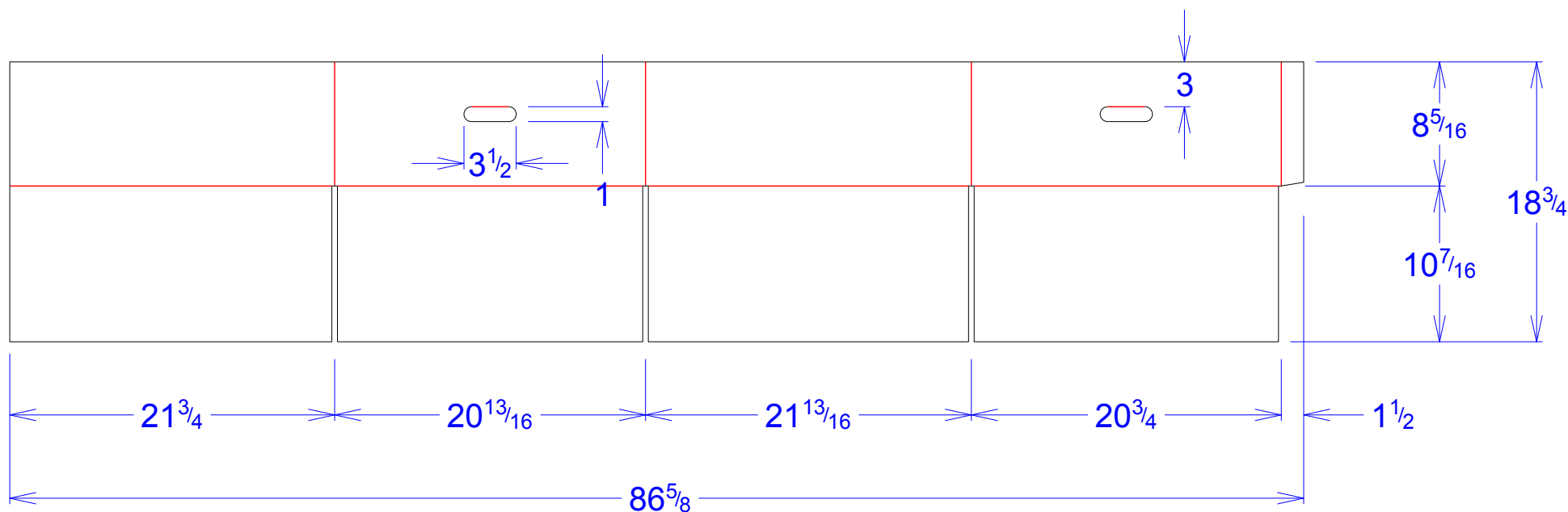




National Account Package Engineering
engsupport@victorypackaging.com
www.victorypackaging.com

CUSTOMER:	APTIV	ID:	21+1/2 x 20+1/2 x 8	ENGINEER:	Francisco Rios	DESIGN #:	D12973643	0
ITEM:	DDE28719823	BLANK SIZE:	18+3/4 x 86+5/8	SALES REP:	Lisa McCririe	DR #:	M192-00670	
CUST PROD. #:		SQ FT:	11.28	JOINT:	Glued In	PRINT DATE:	03/09/2020	
STYLE:	HSC	WASTE (%):	1.82	CORR DIRECTION:	Vertical	VIEW:	outside	
MATERIAL:	48 ECT BC Kraft	RULE TOTAL IN:	406.491	PROJECT NAME:	M192-00670 Aptiv			
MATERIAL NOTES:				GENERAL NOTES:				



Vertical Corrugation

Print Status:	ID and Cert
Colors:	

General Tolerances unless otherwise noted:			
Die Cut Corrugated Flat:	+/- 1/16	Pad/Block location:	+/- 1/8
Die Cut Corrugated Rotary:	+/- 3/16	Pad/Sheet:	+/- 1/8
Wood Block:	+/- 1/4	Foam Block:	+/- 3/16

Specification Release
Approved for Production:

Yes