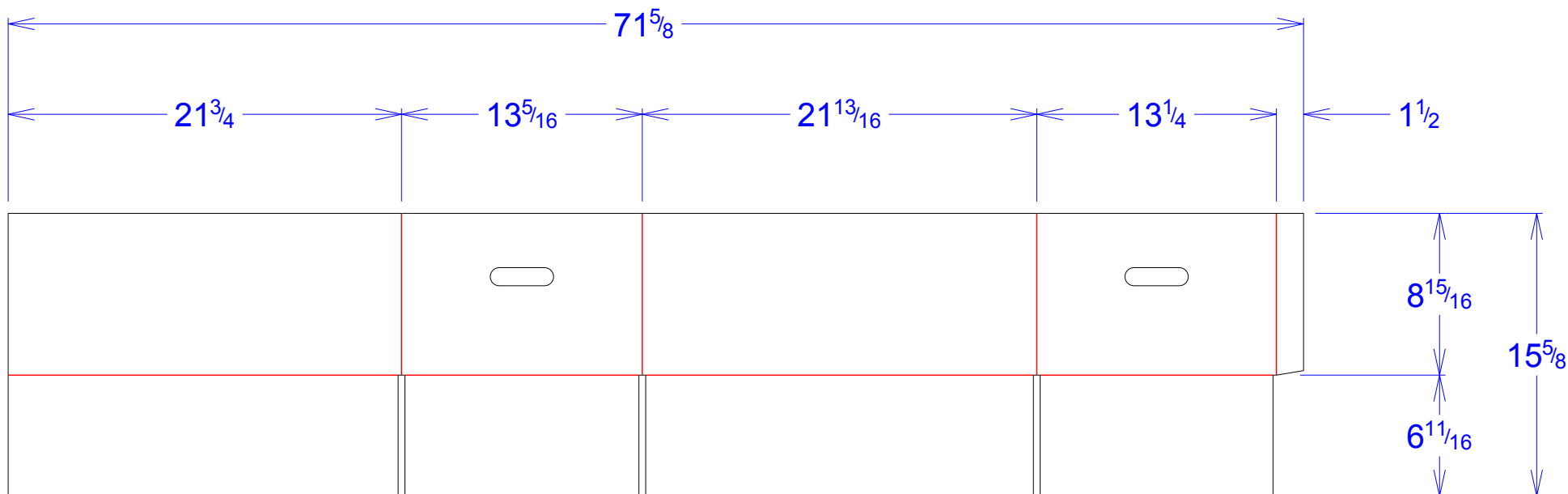




National Account Package Engineering  
engsupport@victorypackaging.com  
www.victorypackaging.com

CUSTOMER:	APTIV	ID:	21+1/2 x 13 x 8+5/8	ENGINEER:	Carlos Gonzalez	DESIGN #:	<b>D12975093</b>	<b>0</b>
ITEM:	DDE28719799	BLANK SIZE:	15+5/8 x 71+5/8	SALES REP:	Lisa Mcririe	DR #:	M194-00025	
CUST PROD. #:		SQ FT:	7.77	JOINT:	Glued In	PRINT DATE:	06/18/2020	
STYLE:	HSC	WASTE (%):	1.7	CORR DIRECTION:	Vertical	VIEW:	outside	
MATERIAL:	48 ECT BC Kraft	RULE TOTAL IN:	335.241	PROJECT NAME:	M194-00025 Aptiv			
MATERIAL NOTES:				GENERAL NOTES:				



Vertical Corrugation

Print Status:	ID and Cert
Colors:	

General Tolerances unless otherwise noted:			
Die Cut Corrugated Flat:	+/- 1/16	Pad/Block location:	+/- 1/8
Die Cut Corrugated Rotary:	+/- 3/16	Pad/Sheet:	+/- 1/8
		Wood Block:	+/- 1/4
		Foam Block:	+/- 3/16

Specification Release  
Approved for Production:

**Yes**