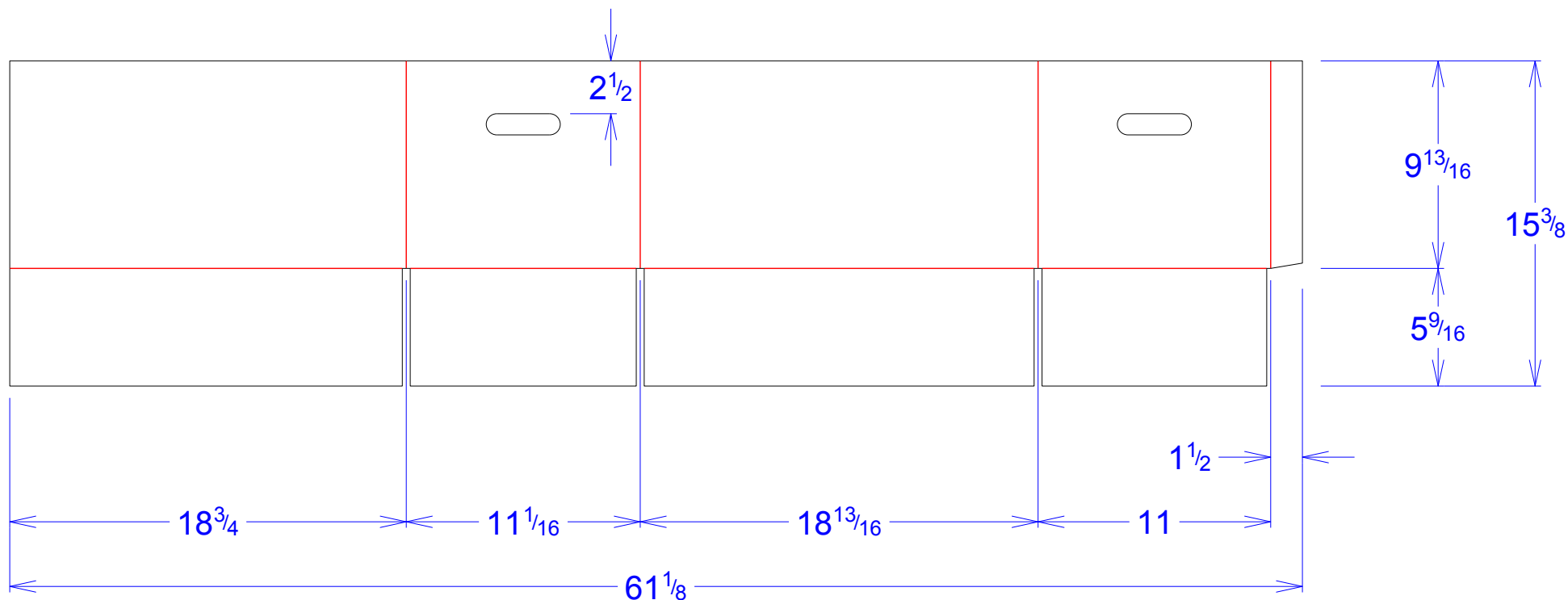




National Account Package Engineering
engsupport@victorypackaging.com
www.victorypackaging.com

CUSTOMER:	APTIV	ID:	18+1/2 x 10+3/4 x 9+1/2	ENGINEER:	Alejandro Olivas	DESIGN #:	D12970941	0
ITEM:	DDE28719483	BLANK SIZE:	15+3/8 x 61+1/8	SALES REP:	Lisa McCririe	DR #:	M184-00632	
CUST PROD. #:	28719483	SQ FT:	6.53	JOINT:	Glued In	PRINT DATE:	03/26/2020	
STYLE:	HSC	WASTE (%):	1.68	CORR DIRECTION:	Vertical	VIEW:	outside	
MATERIAL:	71 ECT BC Kraft	RULE TOTAL IN:	299.991	PROJECT NAME:	M184-00632 Rev 3 Aptiv			
MATERIAL NOTES:				GENERAL NOTES:				



Vertical Corrugation

Print Status:	ID and Cert
Colors:	

General Tolerances unless otherwise noted:			
Die Cut Corrugated Flat:	+/- 1/16	Pad/Block location:	+/- 1/8
Die Cut Corrugated Rotary:	+/- 3/16	Pad/Sheet:	+/- 1/8
Wood Block:	+/- 1/4	Foam Block:	+/- 3/16

Specification Release
Approved for Production:

Yes