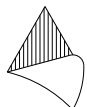
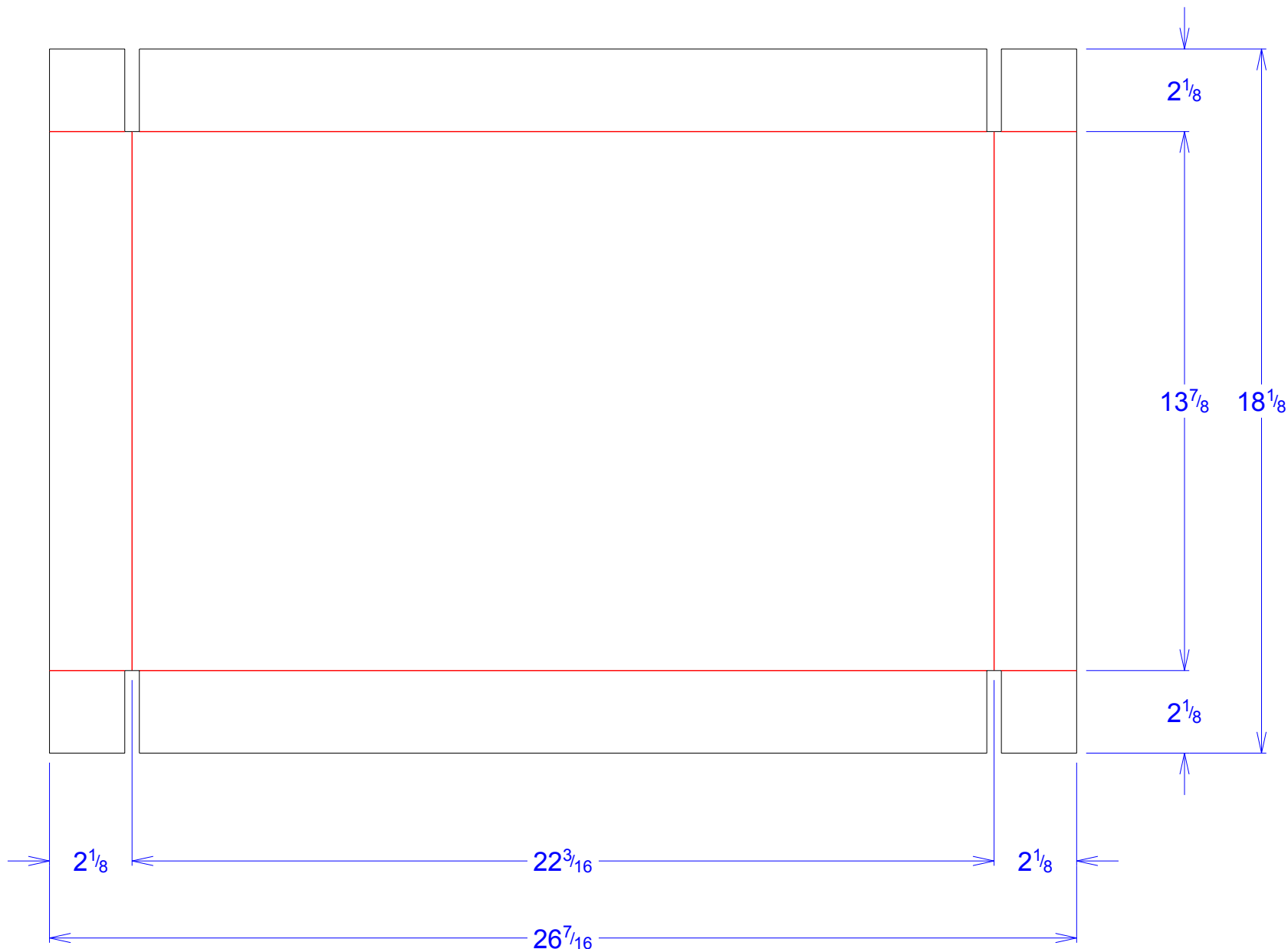




National Account Package Engineering
engsupport@victorypackaging.com
www.victorypackaging.com

CUSTOMER:	APTIV	ID:	22 x 13+1/2 x 2	ENGINEER:	Alejandro Olivas	DESIGN #:	D12971186	0
ITEM:	DDE28719419	BLANK SIZE:	18+1/8 x 26+7/16	SALES REP:	Lisa McCririe	DR #:	M192-00290	
CUST PROD. #:	28719419	SQ FT:	3.33	JOINT:	None	PRINT DATE:	03/09/2020	
STYLE:	Tray	WASTE (%):	0.67	CORR DIRECTION:	Vertical	VIEW:	outside	
MATERIAL:	32 ECT C Kraft	RULE TOTAL IN:	185+1/4	PROJECT NAME:	M192-00290 APTIV			
MATERIAL NOTES:	P702 SRR5			GENERAL NOTES:				



Vertical Corrugation

Print Status: ID and Cert
Colors:

General Tolerances unless otherwise noted:			
Die Cut Corrugated Flat:	+/- 1/16	Pad/Block location:	+/- 1/8
Die Cut Corrugated Rotary:	+/- 3/16	Pad/Sheet:	+/- 1/8
		Wood Block:	+/- 1/4
		Foam Block:	+/- 3/16

Specification Release
Approved for Production:

Yes