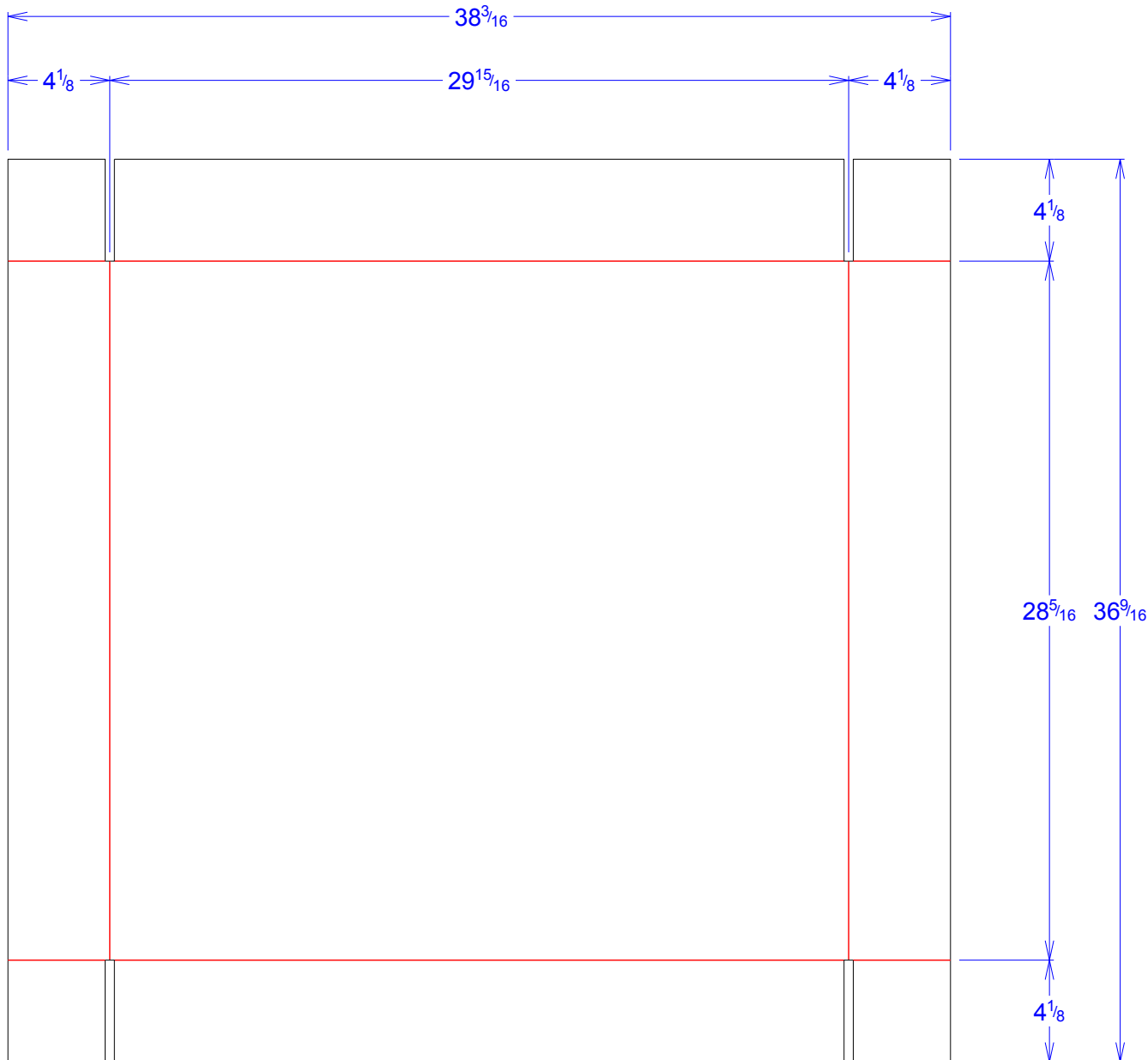




National Account Package Engineering
engsupport@victorypackaging.com
www.victorypackaging.com

CUSTOMER:	APTIV	ID:	29+3/4 x 27+15/16 x 4	ENGINEER:	Carlos Gonzalez	DESIGN #:	D12962193	0
ITEM:	DDE28709251	BLANK SIZE:	36+9/16 x 38+3/16	SALES REP:	Lisa Mcririe	DR #:	M191-00563 Rev 2	
CUST PROD. #:		SQ FT:	9.7	JOINT:		PRINT DATE:	11/05/2019	
STYLE:	TRAY	WASTE (%):	0.44	CORR DIRECTION:	Vertical	VIEW:	outside	
MATERIAL:	32 ECT C Kraft	RULE TOTAL IN:	314	PROJECT NAME:	M191-00563 Aptiv Rev 2			
MATERIAL NOTES:				GENERAL NOTES:				



Vertical Corrugation

Print Status:	Plain
Colors:	

General Tolerances unless otherwise noted:			
Die Cut Corrugated Flat:	+/- 1/16	Pad/Block location:	+/- 1/8
Die Cut Corrugated Rotary:	+/- 3/16	Pad/Sheet:	+/- 1/8
		Wood Block:	+/- 1/4
		Foam Block:	+/- 3/16

Specification Release
Approved for Production:

Yes