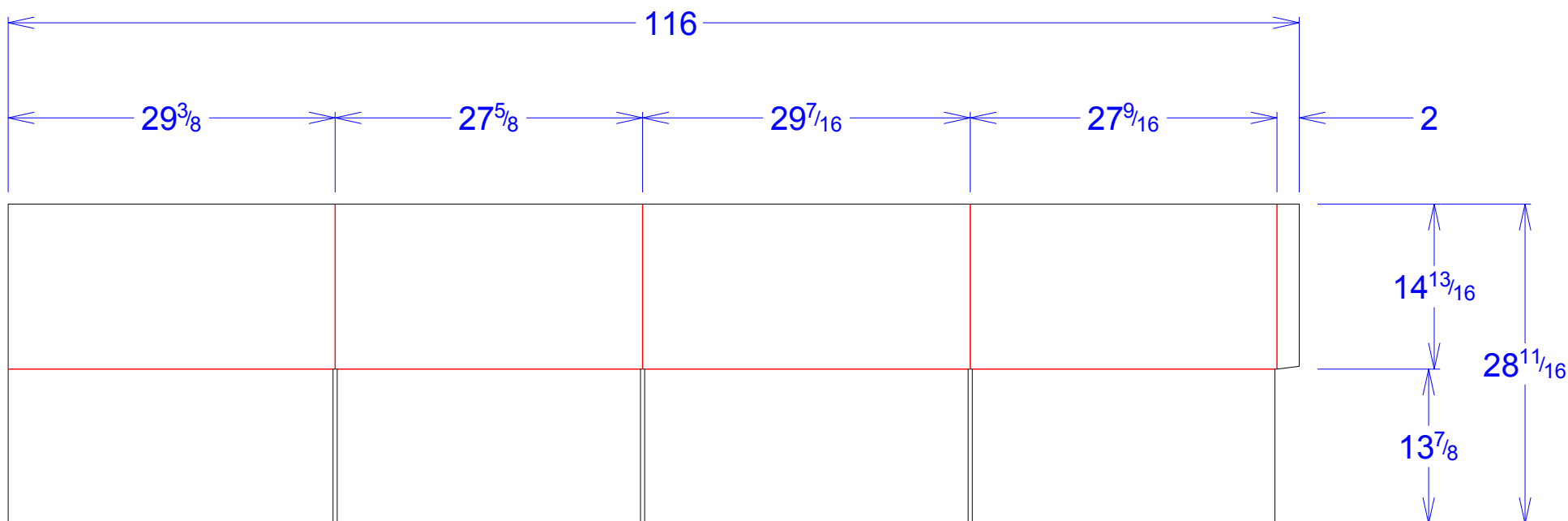




National Account Package Engineering  
engsupport@victorypackaging.com  
www.victorypackaging.com

CUSTOMER:	APTIV	ID:	29+1/8 x 27+5/16 x 14+1/2	ENGINEER:	Carlos Gonzalez	DESIGN #:	<b>D12962192</b>	<b>0</b>
ITEM:	DDE28709250	BLANK SIZE:	28+11/16 x 116	SALES REP:	Lisa Mcririe	DR #:	M192-00563 Rev 2	
CUST PROD. #:		SQ FT:	23.11	JOINT:	Glued In	PRINT DATE:	11/05/2019	
STYLE:	HSC	WASTE (%):	1.39	CORR DIRECTION:	Vertical	VIEW:	outside	
MATERIAL:	48 ECT BC Kraft	RULE TOTAL IN:	544+21/64	PROJECT NAME:	M191-00563 Aptiv Rev 2			
MATERIAL NOTES:				GENERAL NOTES:				



Vertical Corrugation

Print Status:	ID and Cert
Colors:	

General Tolerances unless otherwise noted:			
Die Cut Corrugated Flat:	+/- 1/16	Pad/Block location:	+/- 1/8
Die Cut Corrugated Rotary:	+/- 3/16	Pad/Sheet:	+/- 1/8
		Wood Block:	+/- 1/4
		Foam Block:	+/- 3/16

Specification Release  
Approved for Production:

Yes