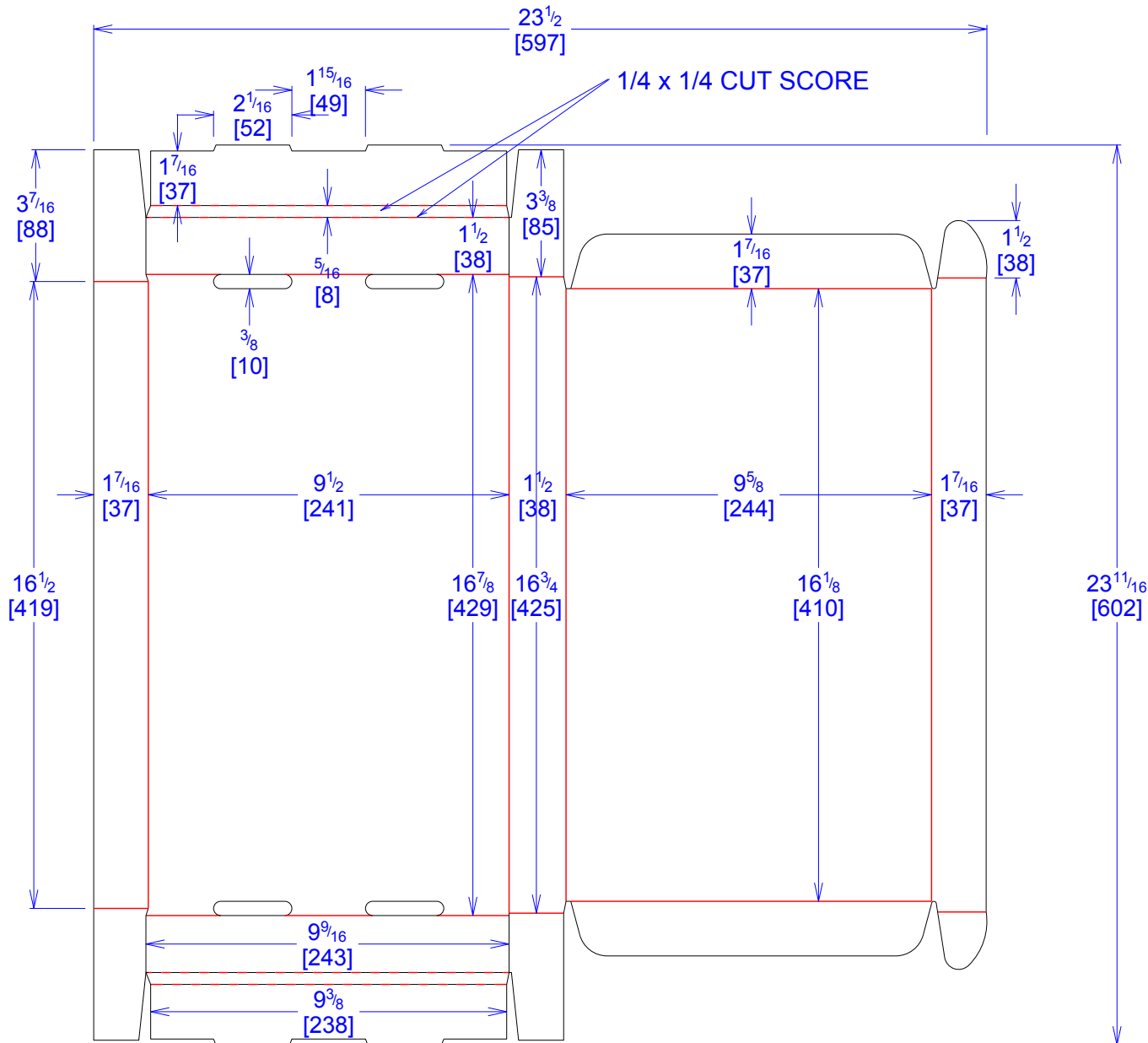




National Account Package Engineering  
engsupport@victorypackaging.com  
www.victorypackaging.com

CUSTOMER:	APTIV	ID:	15+7/8 x 9+3/8 x 1+3/8	ENGINEER:	Carlos Gonzalez	DESIGN #:	<b>D12954144</b>	<b>0</b>
ITEM:	DDE28695236	BLANK SIZE:	23+11/16 x 23+1/2	SALES REP:	Lisa McCririe	DR #:	M191-00728	
CUST PROD. #:		SQ FT:	3.87	JOINT:		PRINT DATE:	10/13/2020	
STYLE:	DC	WASTE (%):	10.46	CORR DIRECTION:	Vertical	VIEW:	outside	
MATERIAL:	32 ECT B Kraft	RULE TOTAL IN:	284.914	PROJECT NAME:	M191-00728 Aptiv	GENERAL NOTES:		
MATERIAL NOTES:								



Vertical Corrugation

Print Status:	Plain
Colors:	

General Tolerances unless otherwise noted:			
Die Cut Corrugated Flat:	+/- 1/16	Pad/Block location:	+/- 1/8
Die Cut Corrugated Rotary:	+/- 3/16	Pad/Sheet:	+/- 1/8
		Wood Block:	+/- 1/4
		Foam Block:	+/- 3/16

Specification Release  
Approved for Production:

Yes