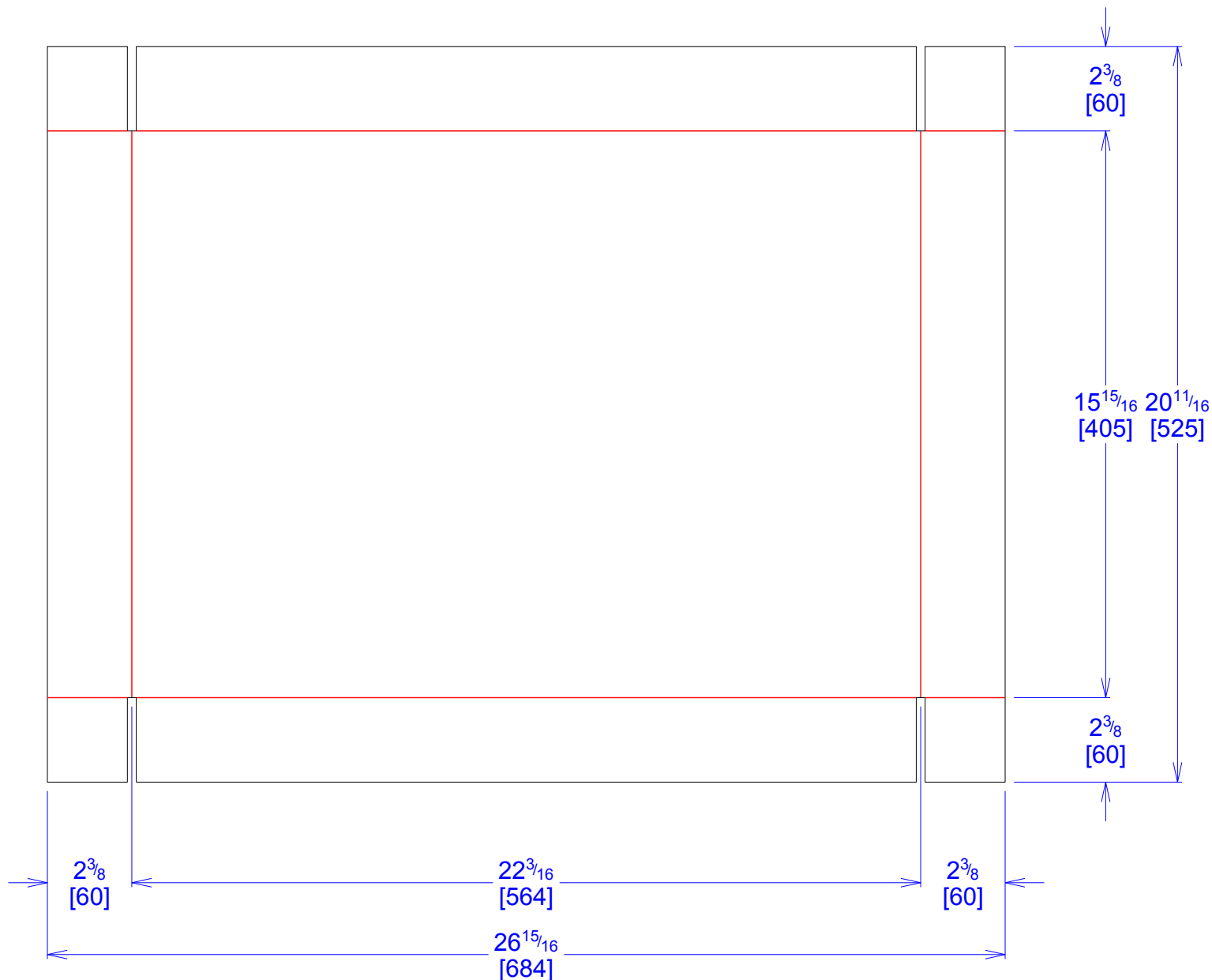




National Account Package Engineering
engsupport@victorypackaging.com
www.victorypackaging.com

CUSTOMER:	Victory Packaging	ID:	22 x 15+9/16 x 2+1/4	ENGINEER:	Cesar Meade	DESIGN #:	D12859091	0
ITEM:	DDE16163612	BLANK SIZE:	20+11/16 x 26+15/16	SALES REP:		DR #:	M152-00517	
CUST PROD. #:		SQ FT:	3.87	JOINT:	None	PRINT DATE:	04/29/2020	
STYLE:	TRAY	WASTE (%):	0.43	CORR DIRECTION:	Vertical	VIEW:	outside	
MATERIAL:	32 ECT C Kraft	RULE TOTAL IN:	199	PROJECT NAME:	M152-00517			
MATERIAL NOTES:				GENERAL NOTES:				



Vertical Corrugation

Print Status:	Plain
Colors:	

General Tolerances unless otherwise noted:			
Die Cut Corrugated Flat:	+/- 1/16	Pad/Block location:	+/- 1/8
Die Cut Corrugated Rotary:	+/- 3/16	Pad/Sheet:	+/- 1/8
		Wood Block:	+/- 1/4
		Foam Block:	+/- 3/16

Specification Release
Approved for Production:

Yes