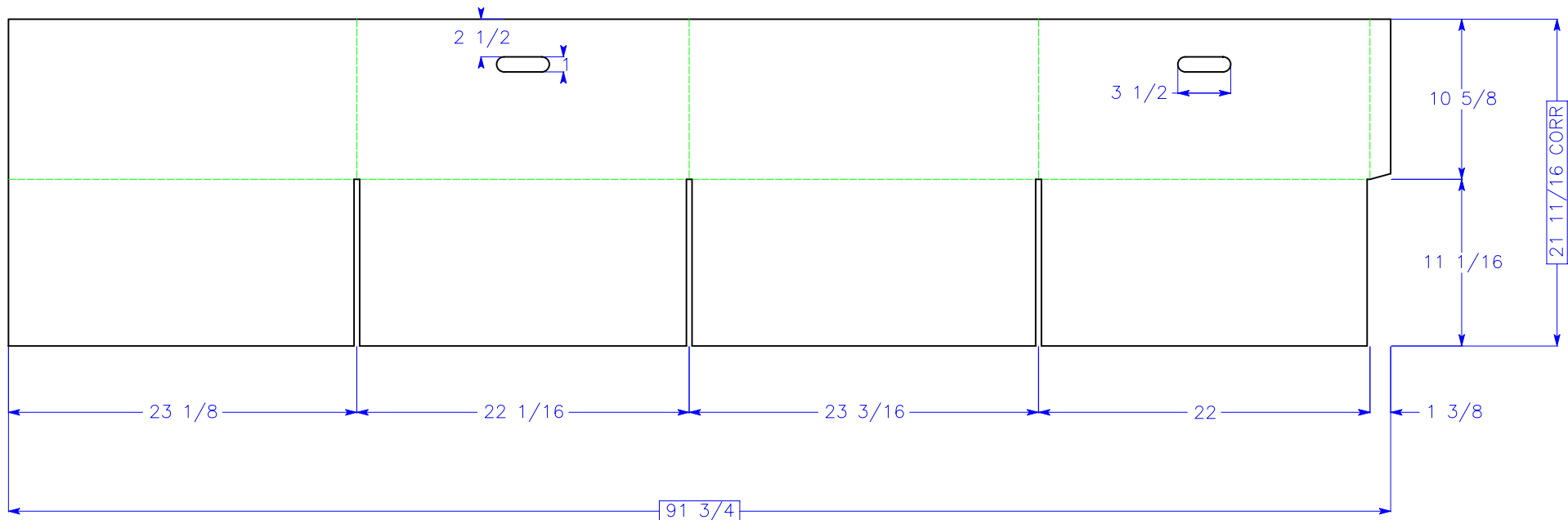




**Victory
Packaging**

National Account Package Engineering
engsupport@victorypackaging.com
www.victorypackaging.com

Customer : Delphi - E&S	Style : HSC	Origination Date : 12/04/2007	Design # : 1970002532
Item : 16161460	Joint : CT	DR#: 0038 06	Rev :
I.D. : 23 X 21 7/8 X 10 7/16	Print Card Required : NO	Sales Rep: Lisa McCrie	Last Change Date: 12/20/2007
Blank Size : 21 11/16 X 91 3/4 SqFt: 13.8183	Rule Total : 441	Waste (SqFt): .2539	Designer : Chris Teagan
Board : 44 ECT C Kraft	Corr Dir : Y Vertical	Stock : - - -	View: Inside
Notes :			



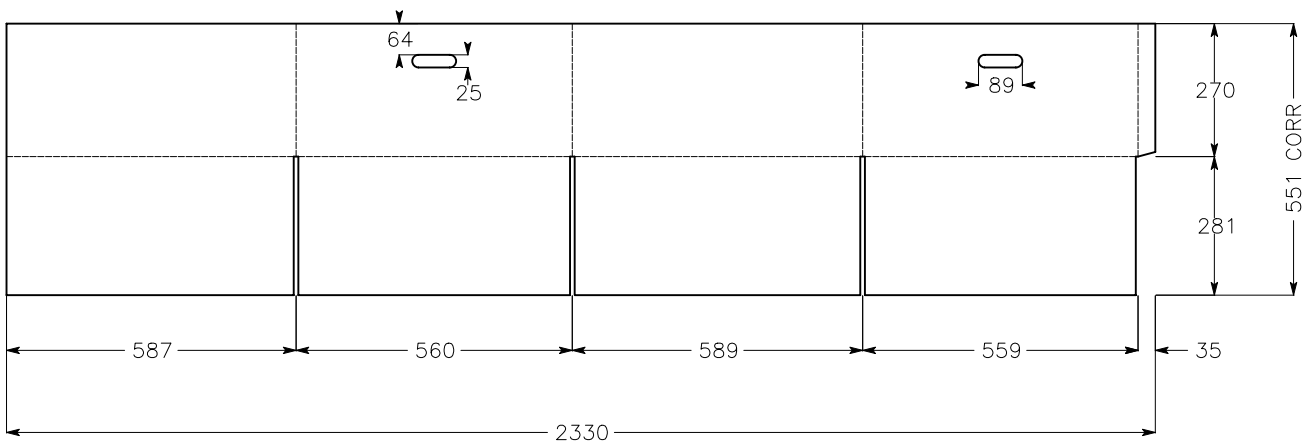
Notice: The information contained in this drawing is the sole property of Victory Packaging. Any reproduction in part or as a whole without written permission is prohibited.

General Tolerances unless otherwise noted:

Specification Release:

Y X	Die Cut Corrugated Flat: +/- 1/16	Pad/Block location: +/- 1/8	Wood Block: +/- 1/4	Released By: C. Teagan	Release Date: 12/20/07	Production Approval : Yes
	Die Cut Corrugated Rotary: +/- 3/16	Pad/Sheet: +/- 1/8	Foam Block: +/- 3/16			

PART DESCRIPTION: HSC	ID: LENGTH	WIDTH	DEPTH	DATE	SYM	REVISION RECORD	AUTHORITY	DR	AP
	584	556	265	05NO90		RELEASED			
					A	ADD RECYCLE PRINTING	103224	SA	KB
				21JN00	B	DELPHI WORDMARK ADDED	134208	MJH	
				03FE06	C	REDRAWN CN - 1080510906	196145	CB	KB
						48 ECT WAS 275 #			
						UPDATED TITLE BLOCK/TOLERANCES			
				04DE07	D	CHANGED TO 44 ECT C-FLUTE	1080521576	JS	
						CHANGED DIMENSIONS			
						REMOVE CARTON PRINTING			



Carton Printing:
- Printing must be in Black Ink
- Print part number, BMC and MFG Date on bottom flap

DELPHI	THIS DRAWING IS THE PROPERTY OF DELPHI ELECTRONICS AND SAFETY. NO RIGHTS ARE GRANTED TO USE THIS DRAWING FOR ANY PURPOSE OTHER THAN THE FURNISHING OF SERVICES AND SUPPLIES TO DELPHI CORPORATION.	
METRIC	MM	
UNLESS OTHERWISE SPECIFIED; ALL DIMENSIONS ARE IN MM, AND THE TOLERANCES ARE: ± 3.2 MM		
GD&T	SEE ASME Y14.5M-94 FOR GD&T INTERPERTATION	
PDM	CHANGES ALLOWED ONLY BY PDM DOCUMENT PROCEDURES	
AutoCAD	DO NOT SCALE	THIRD ANGLE PROJECTION
FIRST USED	16082986	DES. C. CRAIG 03JA03
REFERENCE	M-53	APR. C. BURTON 03FE06
EXP. MODEL		K. BURGESS 03FE06
EXP. NO.		VPDW 1970002533 12/04/2007
MATERIAL SPEC. 44 ECT C Corrugated		
DRAWING NAME HSC		
PART NUMBER 16161460		SHT 1 OF 1