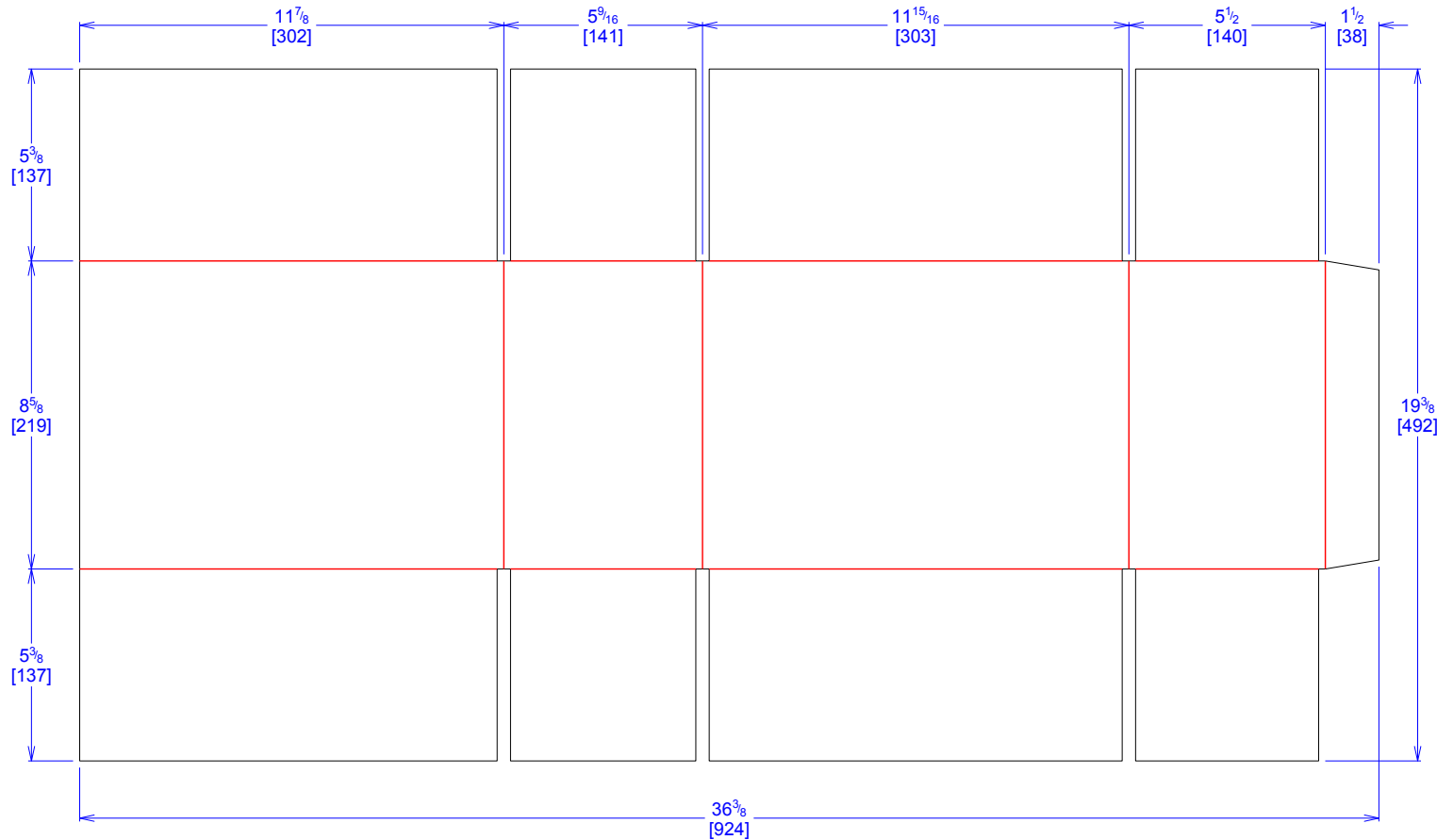


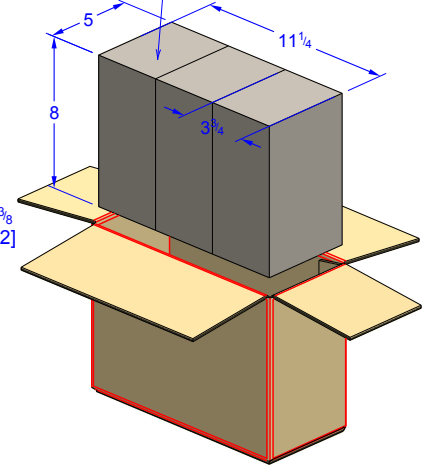


National Account Package Engineering
engsupport@victorypackaging.com
www.victorypackaging.com

CUSTOMER:	Cequent	ID:	11+3/4 x 5+3/8 x 8+1/4	ENGINEER:	Eric VanBuhler	DESIGN #:	D12858504	0
ITEM:	16506-415	BLANK SIZE:	19+3/8 x 36+3/8	SALES REP:	Arturo Ortega	DR #:	M161-00628	
CUST PROD. #:	MASTER BOX	SQ FT:	4.89	JOINT:	Glued In	PRINT DATE:	04/13/2016	
STYLE:	FOL	WASTE (%):	4.34	CORR DIRECTION:	Vertical	VIEW:	outside	
MATERIAL:	44 ECT C Kraft	RULE TOTAL IN:	277.166	KIT:	Cequent -M161-00628-MASTER BOX			
MATERIAL NOTES:				GENERAL NOTES:				



Product



Vertical Corrugation

Print Status:	
Colors:	

General Tolerances unless otherwise noted:					
Die Cut Corrugated Flat:	+/- 1/16	Pad/Block location:	+/- 1/8	Wood Block:	+/- 1/4
Die Cut Corrugated Rotary:	+/- 3/16	Pad/Sheet:	+/- 1/8	Foam Block:	+/- 3/16

Specification Release
Approved for Production:

Yes