

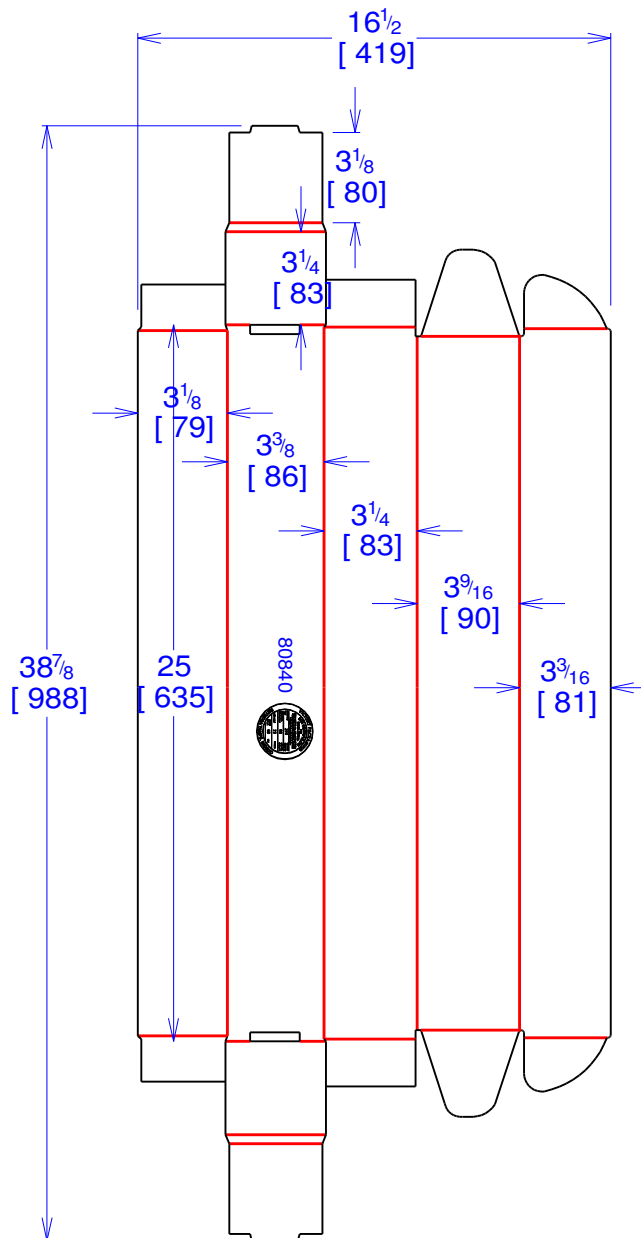


National Account Package Engineering  
engsupport@victorypackaging.com  
www.victorypackaging.com

|                 |             |                |                           |                 |               |              |            |          |
|-----------------|-------------|----------------|---------------------------|-----------------|---------------|--------------|------------|----------|
| CUSTOMER:       | Cequent     | ID:            | 24+3/16 x 3+3/16 x 3+1/16 | ENGINEER:       | Rolando Marin | DESIGN #:    | 4330001064 | 0        |
| ITEM:           | 80840       | BLANK SIZE:    | 38+7/8 x 16+1/2           | SALES REP:      | Arturo Ortega | DR #:        | M131-00381 |          |
| CUST PROD #:    |             | SQ FT:         | 4.454                     | JOINT:          | None          | DESIGN DATE: | 01/03/2013 |          |
| STYLE:          | DC          | WASTE (%):     | 99.83                     | CORR DIRECTION: | Vertical      | VIEW:        | outside    | Units IN |
| MATERIAL:       | 200 B Kraft | RULE TOTAL IN: | 279.164                   | KIT:            |               |              |            |          |
| MATERIAL NOTES: |             |                |                           | GENERAL NOTES:  |               |              |            |          |



80840



Vertical Corrugation

|                           |
|---------------------------|
| Print Status: ID and Cert |
| Colors:                   |

| General Tolerances unless otherwise noted: |          |                     |         |             |          |
|--|----------|---------------------|---------|-------------|----------|
| Die Cut Corrugated Flat:                   | +/- 1/16 | Pad/Block location: | +/- 1/8 | Wood Block: | +/- 1/4  |
| Die Cut Corrugated Rotary:                 | +/- 3/16 | Pad/Sheet:          | +/- 1/8 | Foam Block: | +/- 3/16 |

Specification Release  
Approved for Production:

Yes