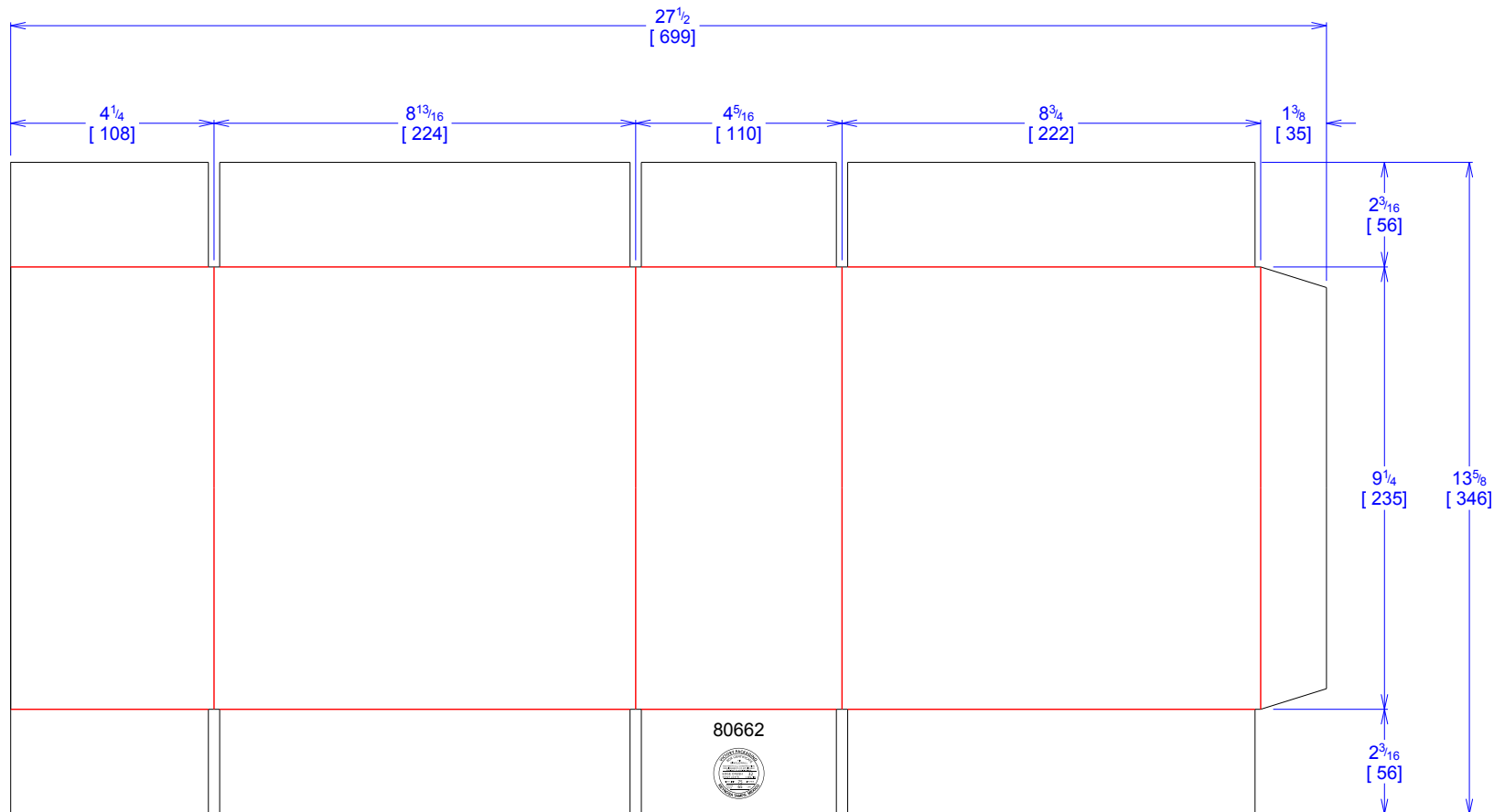




National Account Package Engineering  
engsupport@victorypackaging.com  
www.victorypackaging.com

CUSTOMER:	Cequent	ID:	8+5/8 x 4+1/8 x 8+7/8	ENGINEER:	Ivan Pulido	DESIGN #:	<b>4340000049</b>	<b>0</b>
ITEM:	CPP-80662	BLANK SIZE:	13+5/8 x 27+1/2	SALES REP:	Arturo Ortega	DR #:	M123-00179	
CUST PROD. #:	80662	SQ FT:	2.602	JOINT:	Glued In	DESIGN DATE:	7/26/2012	
STYLE:	RSC	WASTE (%):	2.73	CORR DIRECTION:	Vertical	VIEW:	outside	Units IN
MATERIAL:	32 ECT C Kraft	RULE TOTAL IN:	204.617	KIT:				
MATERIAL NOTES:				GENERAL NOTES:				



80662



Vertical Corrugation

Print Status:	ID and Cert
Colors:	GCM1 90

General Tolerances unless otherwise noted:					
Die Cut Corrugated Flat:	+/- 1/16	Pad/Block location:	+/- 1/8	Wood Block:	+/- 1/4
Die Cut Corrugated Rotary:	+/- 3/16	Pad/Sheet:	+/- 1/8	Foam Block:	+/- 3/16

Specification Release Approved for Production:	<b>Yes</b>
---------------------------------------------------	------------