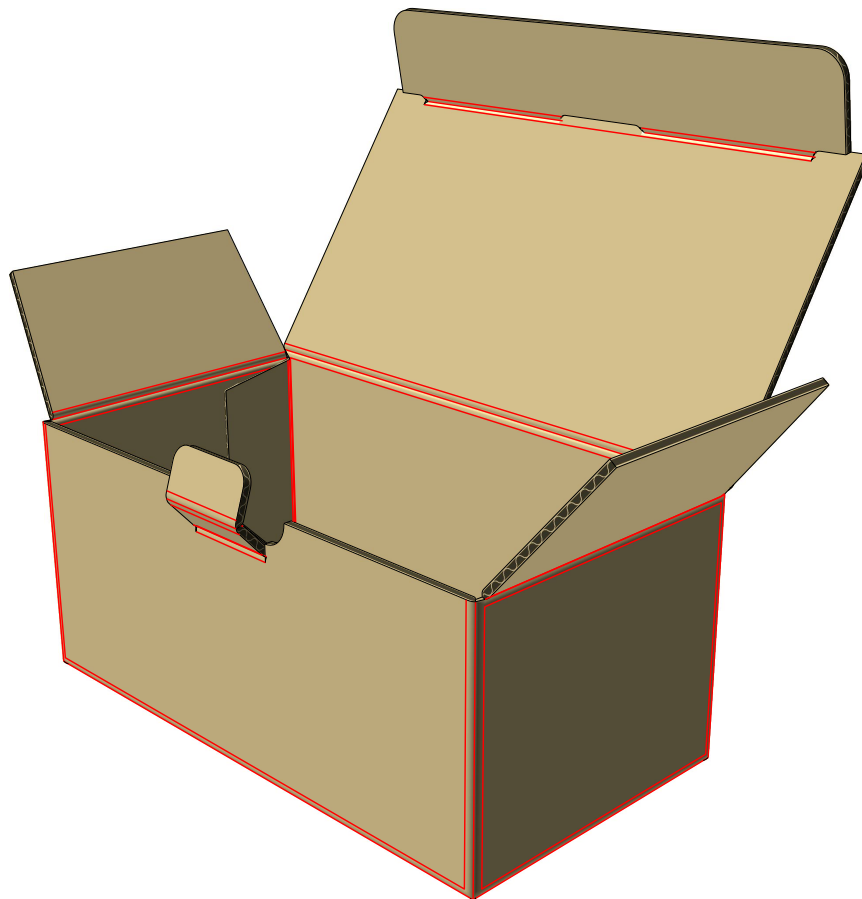




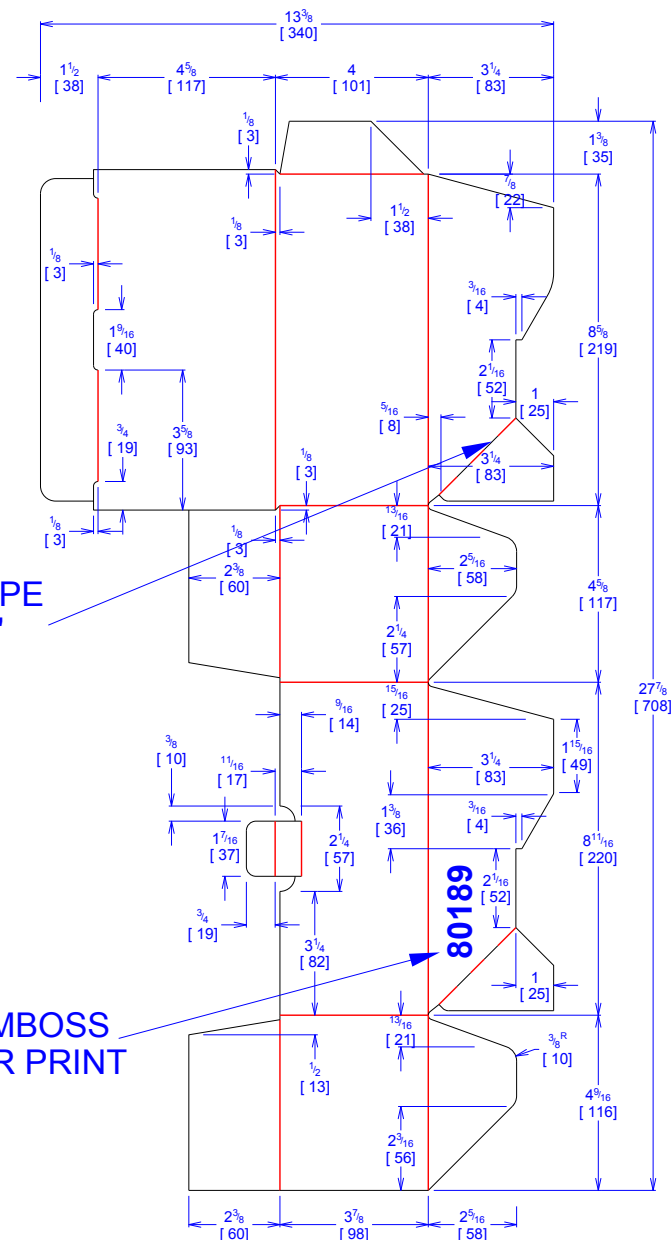
National Account Package Engineering
engsupport@victorypackaging.com
www.victorypackaging.com

CUSTOMER: Cequent	ID: 8+9/16 x 4+1/2 x 3+3/4	ENGINEER: Alvaro Rodriguez	DESIGN #: D01277988	0
ITEM: CPP-80189	BLANK SIZE: 27+7/8 x 13+3/8	SALES REP: Arturo Ortega	DR #: M134-00952	
CUST PROD. #:	SQ FT: 2.589	JOINT: Glued In	PRINT DATE: 01/13/2014	
STYLE: RSC/DC	WASTE (%): 35.1	CORR DIRECTION: Vertical	VIEW: outside	
MATERIAL: 32 ECT B Kraft	RULE TOTAL IN: 179.323	KIT: M134-00952		
MATERIAL NOTES:		GENERAL NOTES:		



PERFATYPE
1/2" X 1/2"

EMBOSS
OR PRINT



Vertical Corrugation

Print Status: Plain
Colors:

General Tolerances unless otherwise noted:			
Die Cut Corrugated Flat:	+/- 1/16	Pad/Block location:	+/- 1/8
Die Cut Corrugated Rotary:	+/- 3/16	Pad/Sheet:	+/- 1/8
		Wood Block:	+/- 1/4
		Foam Block:	+/- 3/16

Specification Release
Approved for Production:

Yes