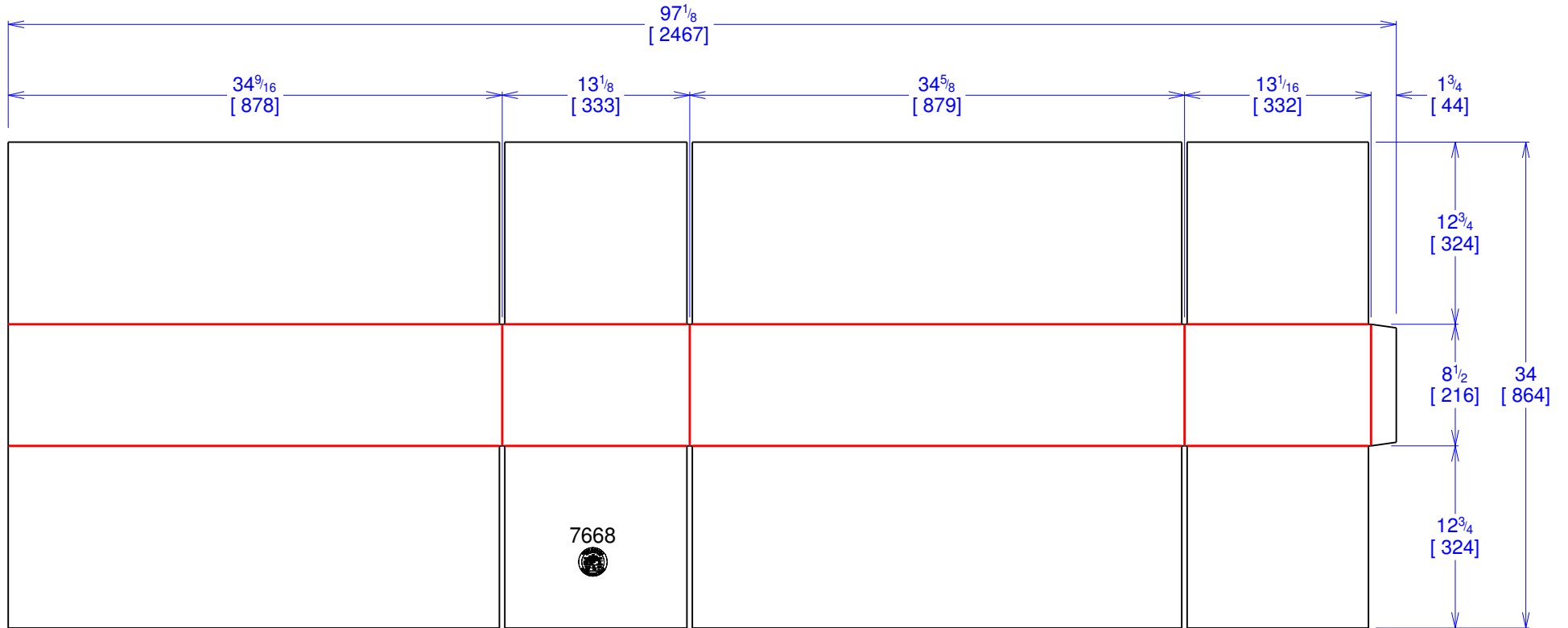




National Account Package Engineering
engsupport@victorypackaging.com
www.victorypackaging.com

| | | | | | | | | |
|-----------------|-----------------|----------------|-------------------------|-----------------|---------------|--------------|------------|----------|
| CUSTOMER: | Cequent | ID: | 34+1/4 x 12+3/4 x 7+1/2 | ENGINEER: | Ivan Pulido | DESIGN #: | 4340000074 | 0 |
| ITEM: | 7668 | BLANK SIZE: | 34 x 97+1/8 | SALES REP: | Arturo Ortega | DR #: | M123-00201 | |
| CUST PROD #: | | SQ FT: | 22.932 | JOINT: | Glued In | DESIGN DATE: | 25/07/2013 | |
| STYLE: | FOL | WASTE (%): | 2.38 | CORR DIRECTION: | Vertical | VIEW: | outside | Units IN |
| MATERIAL: | 48 ECT BC Kraft | RULE TOTAL IN: | 636.911 | KIT: | | | | |
| MATERIAL NOTES: | | | | GENERAL NOTES: | | | | |



Vertical Corrugation

| | |
|---------------|---------------|
| Print Status: | ID and Cert |
| Colors: | BLACK GCM1 90 |

| General Tolerances unless otherwise noted: | | | |
|--|----------|---------------------|----------|
| Die Cut Corrugated Flat: | +/- 1/16 | Pad/Block location: | +/- 1/8 |
| Die Cut Corrugated Rotary: | +/- 3/16 | Pad/Sheet: | +/- 1/8 |
| | | Wood Block: | +/- 1/4 |
| | | Foam Block: | +/- 3/16 |

Specification Release
Approved for Production:

Yes