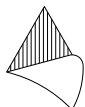
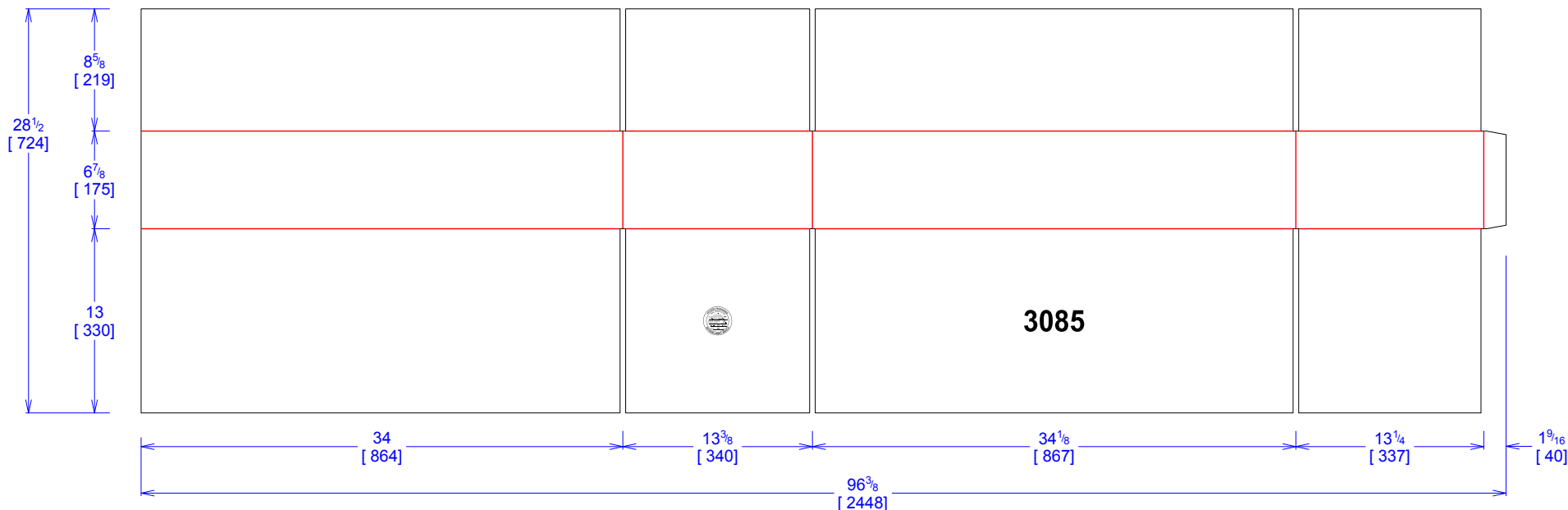




National Account Package Engineering
engsupport@victorypackaging.com
www.victorypackaging.com

| | | | | | | | | |
|-----------------|-----------------|----------------|--------------------------|-----------------|------------------|-------------|------------------|----------|
| CUSTOMER: | Cequent | ID: | 33+7/8 x 13+1/8 x 6+5/16 | ENGINEER: | Alvaro Rodriguez | DESIGN #: | D00020664 | 0 |
| ITEM: | CPP-3085 | BLANK SIZE: | 28+1/2 x 96+5/16 | SALES REP: | Arturo Ortega | DR #: | M133-00473 | |
| CUST PROD. #: | | SQ FT: | 19.062 | JOINT: | Glued In | PRINT DATE: | 09/04/2013 | |
| STYLE: | RSC | WASTE (%): | 2.26 | CORR DIRECTION: | Vertical | VIEW: | outside | |
| MATERIAL: | 42 ECT BC Kraft | RULE TOTAL IN: | 593.4 | KIT: | M133-00473 | | | |
| MATERIAL NOTES: | | | | GENERAL NOTES: | | | | |



Vertical Corrugation

| | |
|---------------|---------------|
| Print Status: | ID and Cert |
| Colors: | GCM1 90 Black |

| General Tolerances unless otherwise noted: | | | |
|--|----------|---------------------|----------|
| Die Cut Corrugated Flat: | +/- 1/16 | Pad/Block location: | +/- 1/8 |
| Die Cut Corrugated Rotary: | +/- 3/16 | Pad/Sheet: | +/- 1/8 |
| | | Wood Block: | +/- 1/4 |
| | | Foam Block: | +/- 3/16 |

Specification Release
Approved for Production:

Yes