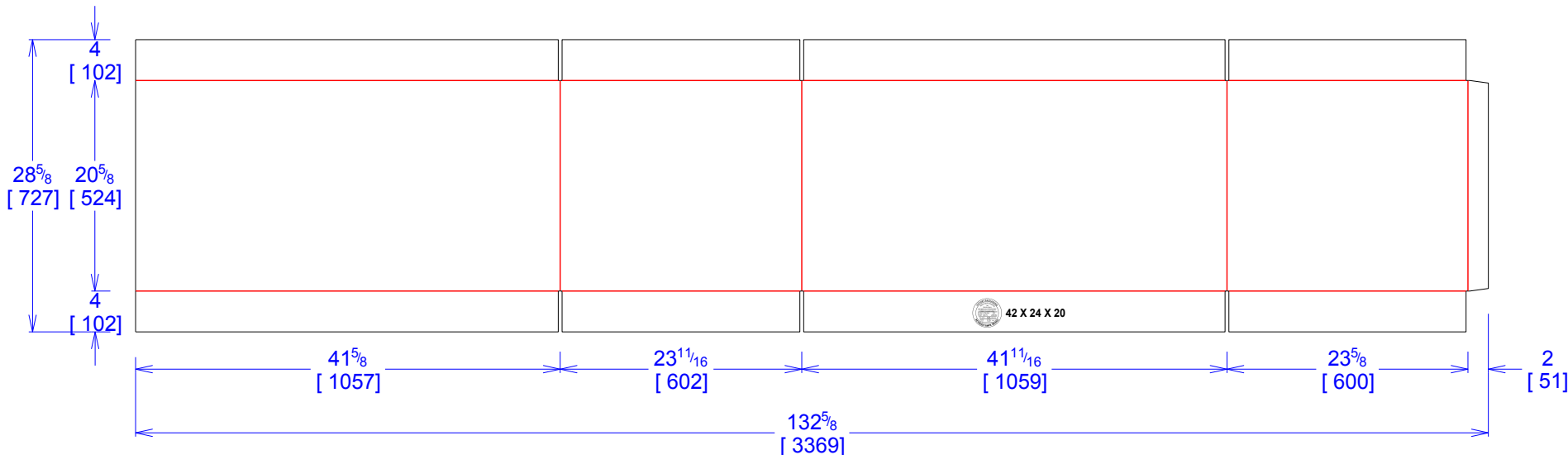




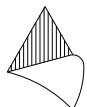
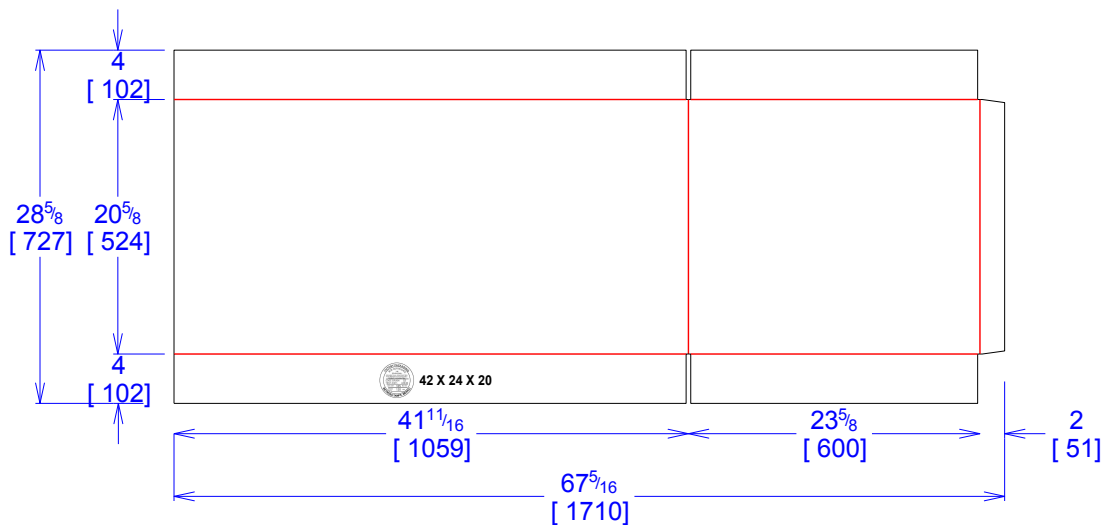
National Account Package Engineering
engsupport@victorypackaging.com
www.victorypackaging.com

CUSTOMER:	Rexnord	ID:	41+3/8 x 23+3/8 x 20	ENGINEER:	Carlos Salinas	DESIGN #:	D12975643	0
ITEM:	Contenedor 42 x 24 x 20	BLANK SIZE:	85+1/8 x 132+5/8	SALES REP:	Fernando Romero	DR #:	M193-00140 rev 3	
CUST PROD. #:		SQ FT:	78.4	JOINT:	Glued In	PRINT DATE:	09/01/2020	
STYLE:	FLANGED	WASTE (%):	49.73	CORR DIRECTION:	Vertical	VIEW:	outside	
MATERIAL:	51 ECT BC Kraft	RULE TOTAL IN:	1089.319	PROJECT NAME:	M193-00140 REV 3 REXNORD			
MATERIAL NOTES:				GENERAL NOTES:				



42 X 24 X 20

OPCION EN 2 PARTES.



Vertical Corrugation

Print Status:	ID and Cert
Colors:	BLACK GCM1 90

General Tolerances unless otherwise noted:			
Die Cut Corrugated Flat:	+/- 1/16	Pad/Block location:	+/- 1/8
Die Cut Corrugated Rotary:	+/- 3/16	Pad/Sheet:	+/- 1/8
		Wood Block:	+/- 1/4
		Foam Block:	+/- 3/16

Specification Release
Approved for Production:

Yes