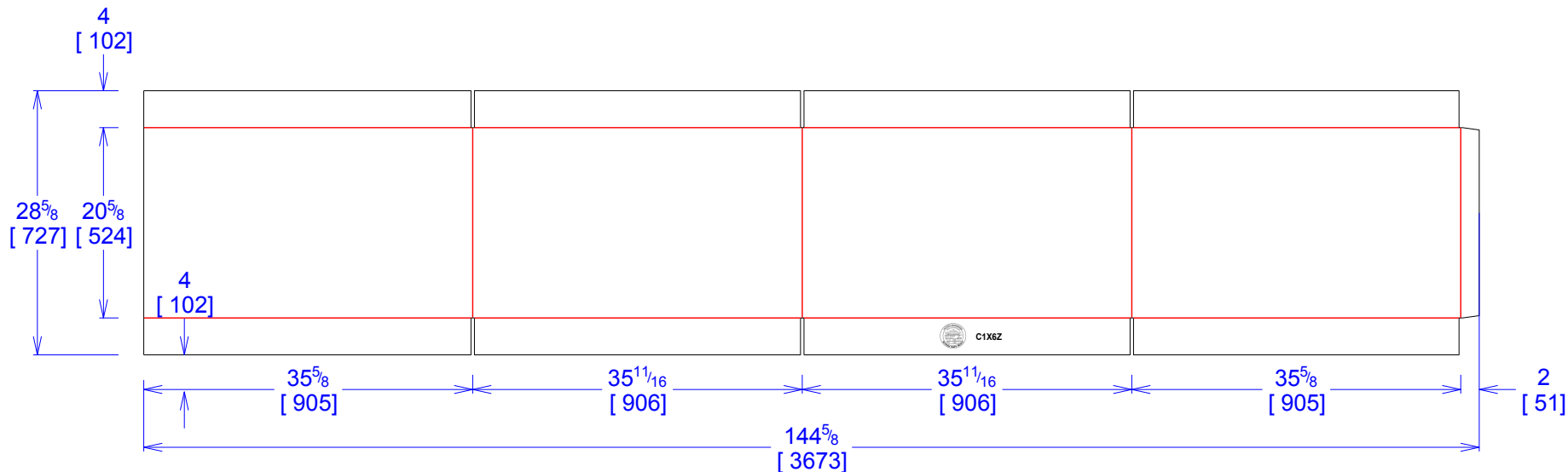




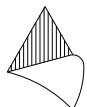
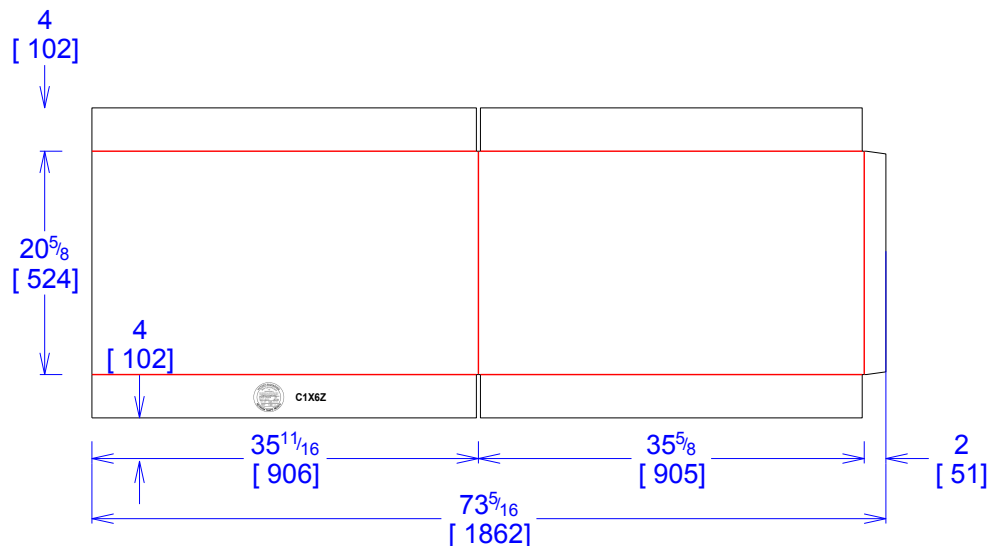
National Account Package Engineering
engsupport@victorypackaging.com
www.victorypackaging.com

CUSTOMER: Rexnord	ID: 35+3/8 x 35+3/8 x 20	ENGINEER: Carlos Salinas	DESIGN #: D12975661	0
ITEM: REX-C1X6Z	BLANK SIZE: 92+3/16 x 144+5/8	SALES REP: Fernando Romero	DR #: M193-00140 rev 3	
CUST PROD. #:	SQ FT: 92.59	JOINT: Glued In	PRINT DATE: 09/09/2020	
STYLE: Flanged	WASTE (%): 53.57	CORR DIRECTION: Vertical	VIEW: outside	
MATERIAL: 51 ECT BC Kraft	RULE TOTAL IN: 1161.319	PROJECT NAME: M193-00140 REV 3 REXNORD		
MATERIAL NOTES:		GENERAL NOTES:		



C1X6Z

OPCION EN 2 PARTES



Vertical Corrugation

Print Status: ID and Cert
Colors: BLACK GCM1 90

General Tolerances unless otherwise noted:			
Die Cut Corrugated Flat:	+/- 1/16	Pad/Block location:	+/- 1/8
Die Cut Corrugated Rotary:	+/- 3/16	Pad/Sheet:	+/- 1/8
Wood Block:	+/- 1/4	Foam Block:	+/- 3/16

Specification Release
Approved for Production:

Yes