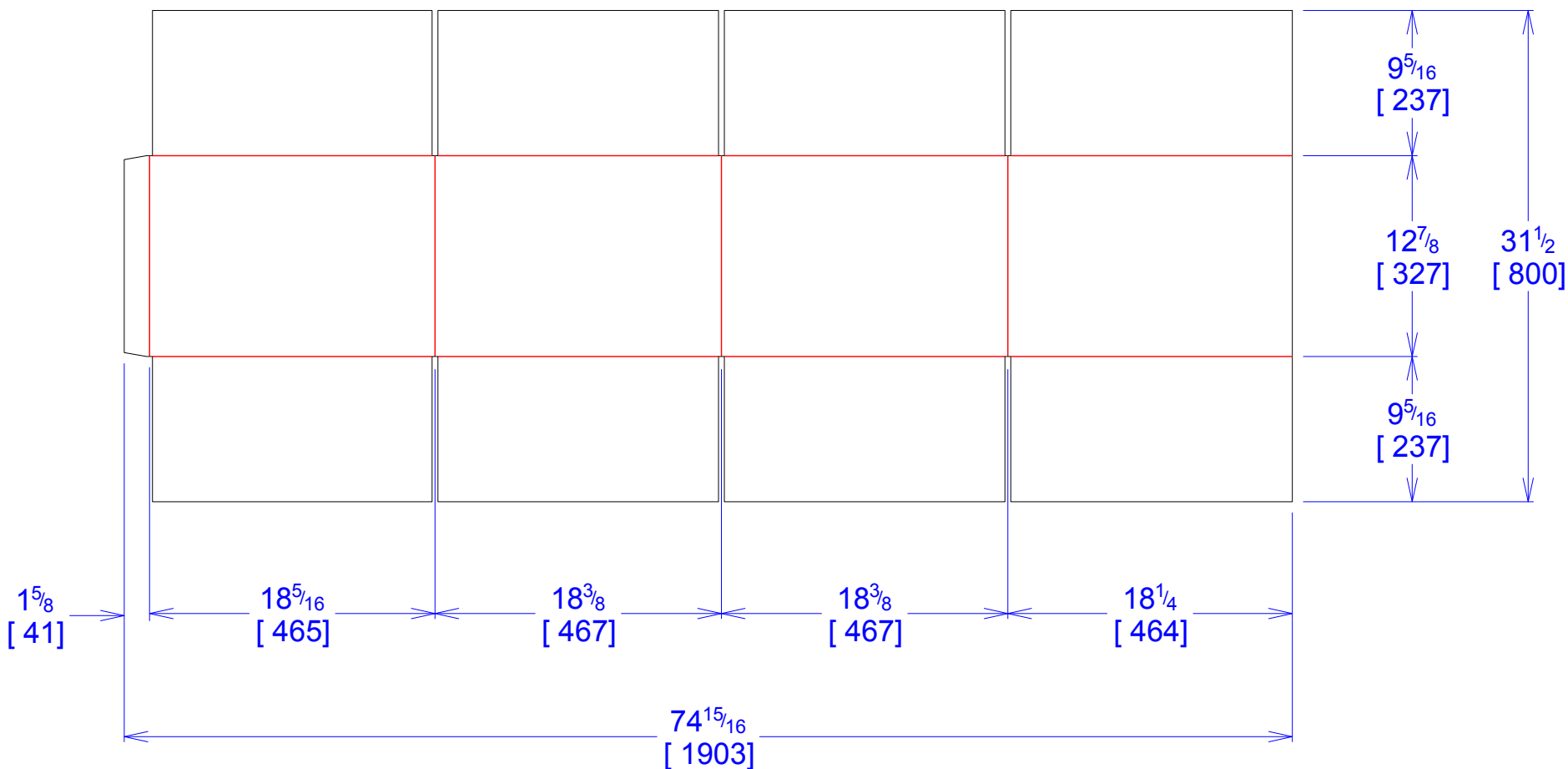




National Account Package Engineering  
engsupport@victorypackaging.com  
www.victorypackaging.com

CUSTOMER:	Regal Beloit	ID:	18 x 18 x 12	ENGINEER:	Sergio Salazar	DESIGN #:	D12988592	0
ITEM:	9147915	BLANK SIZE:	31+1/2 x 74+15/16	SALES REP:	Enrique Gonzalez	DR #:		
CUST PROD. #:		SQ FT:	16.39	JOINT:	Glued In	PRINT DATE:	05/27/2020	
STYLE:	RSC	WASTE (%):	2.33	CORR DIRECTION:	Vertical	VIEW:	outside	
MATERIAL:	51 ECT BC Kraft	RULE TOTAL IN:	519.668	PROJECT NAME:	M202-00333 Regal Beloit*	GENERAL NOTES: SE ACTUALIZA NUM, DE PARTE Y ESTE DISEÑO REEMPLAZA AL*		
MATERIAL NOTES:								



Vertical Corrugation

Print Status:	ID and Cert
Colors:	

General Tolerances unless otherwise noted:			
Die Cut Corrugated Flat:	+/- 1/16	Pad/Block location:	+/- 1/8
Die Cut Corrugated Rotary:	+/- 3/16	Pad/Sheet:	+/- 1/8
Wood Block:	+/- 1/4	Foam Block:	+/- 3/16

Specification Release  
Approved for Production:

**Yes**