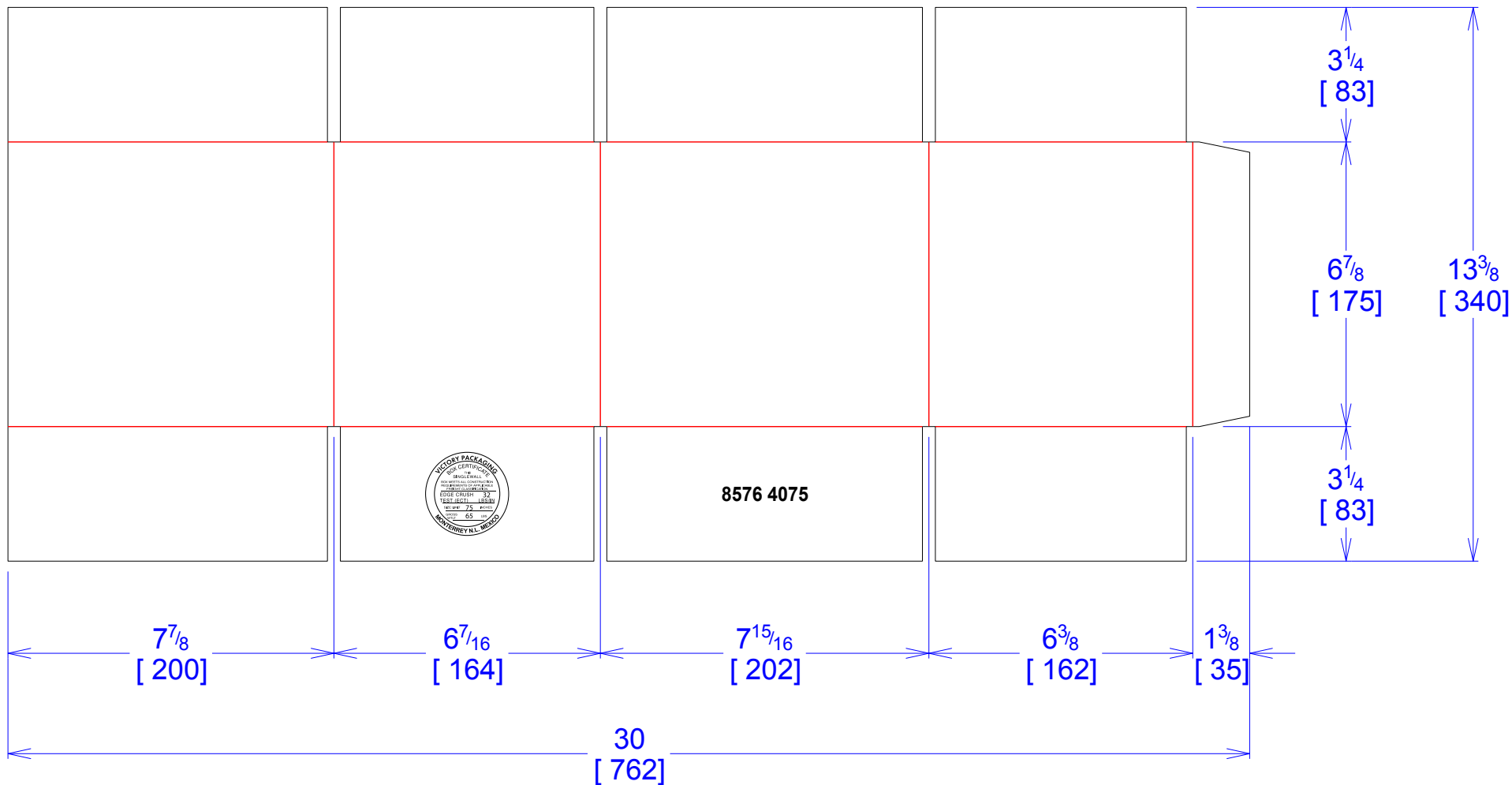




National Account Package Engineering  
engsupport@victorypackaging.com  
www.victorypackaging.com

CUSTOMER:	Regal Beloit	ID:	7+3/4 x 6+1/4 x 6+1/2	ENGINEER:	Israel Ramirez	DESIGN #:	<b>D12831624</b>	<b>0</b>
ITEM:	8576 4075J	BLANK SIZE:	13+3/8 x 30	SALES REP:	Cecilia Villarreal	DR #:	M152-00597	
CUST PROD. #:		SQ FT:	2.786	JOINT:	Glued In	PRINT DATE:	05/26/2015	
STYLE:	RSC	WASTE (%):	4.08	CORR DIRECTION:	Vertical	VIEW:	outside	
MATERIAL:	32 ECT C Kraft	RULE TOTAL IN:	207.863	KIT:	M152-00597 REGAL BELOIT			
MATERIAL NOTES:				GENERAL NOTES:				



Vertical Corrugation

Print Status: ID and Cert
Colors: GCM1 90

General Tolerances unless otherwise noted:			
Die Cut Corrugated Flat:	+/- 1/16	Pad/Block location:	+/- 1/8
Die Cut Corrugated Rotary:	+/- 3/16	Pad/Sheet:	+/- 1/8
Wood Block:	+/- 1/4	Foam Block:	+/- 3/16

Specification Release  
Approved for Production:

**YES**