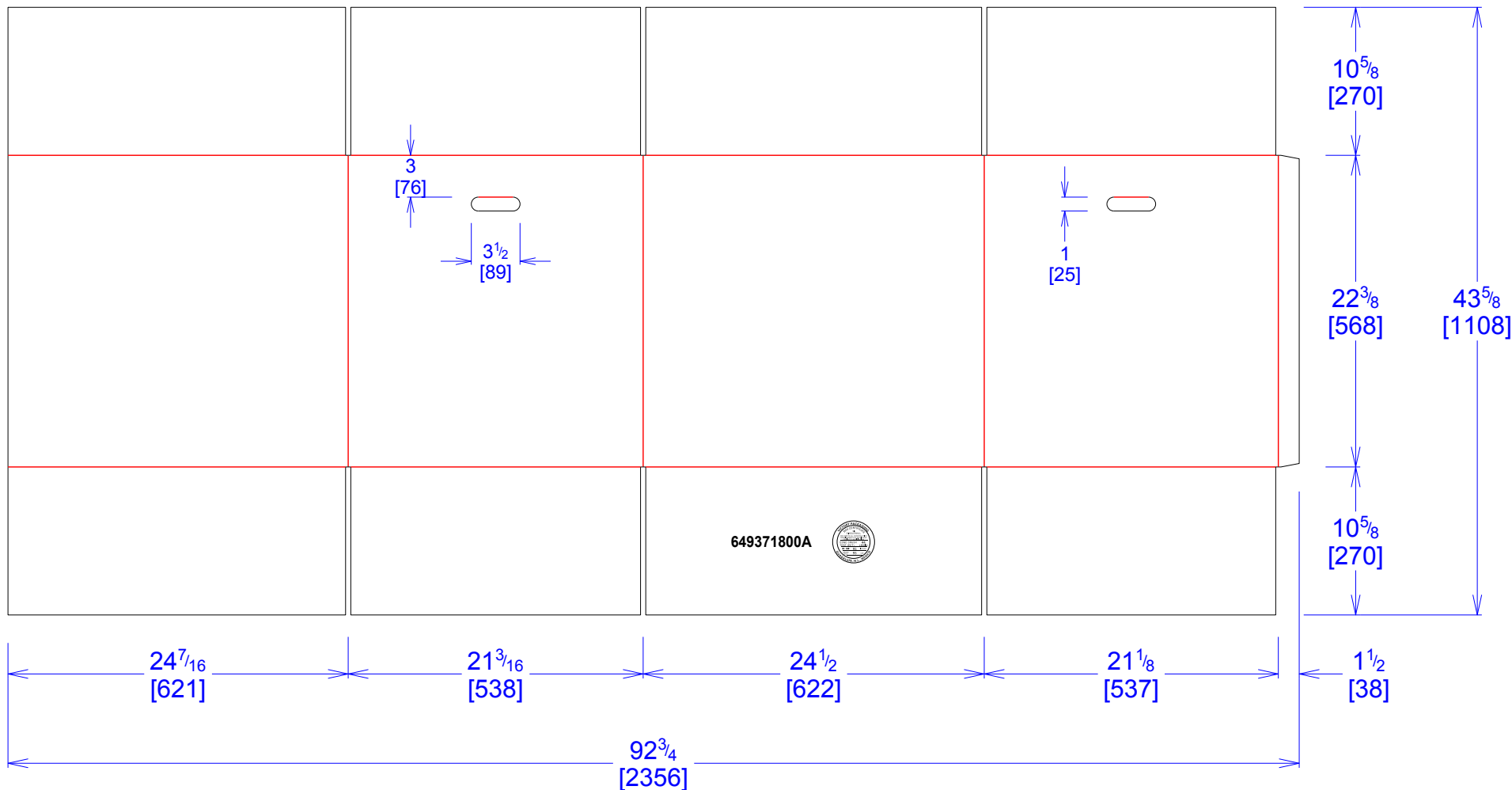




National Account Package Engineering  
engsupport@victorypackaging.com  
www.victorypackaging.com

CUSTOMER:	Autoliv	ID:	24+5/16 x 21 x 22	ENGINEER:	Gerrardo Arrambide	DESIGN #:	<b>D12938677</b>	<b>0</b>
ITEM:	649371800A MASTER BOX BIG BOX	BLANK SIZE:	43+5/8 x 92+3/4	SALES REP:	Arturo Ortega	DR #:	M183-00569	
CUST PROD. #:		SQ FT:	28.1	JOINT:	Glued In	PRINT DATE:	09/27/2018	
STYLE:	RSC	WASTE (%):	1.49	CORR DIRECTION:	Vertical	VIEW:	outside	
MATERIAL:	44 ECT C Kraft	RULE TOTAL IN:	685.455	PROJECT NAME:	M183-00569 Autoliv			
MATERIAL NOTES:				GENERAL NOTES:	MASTER BOX, BIG BOX / Bezel			



Vertical Corrugation

Print Status:	ID and Cert
Colors:	Negro GCM1 90

General Tolerances unless otherwise noted:			
Die Cut Corrugated Flat:	+/- 1/16	Pad/Block location:	+/- 1/8
Die Cut Corrugated Rotary:	+/- 3/16	Pad/Sheet:	+/- 1/8
Wood Block:	+/- 1/4	Foam Block:	+/- 3/16

Specification Release  
Approved for Production:

Yes