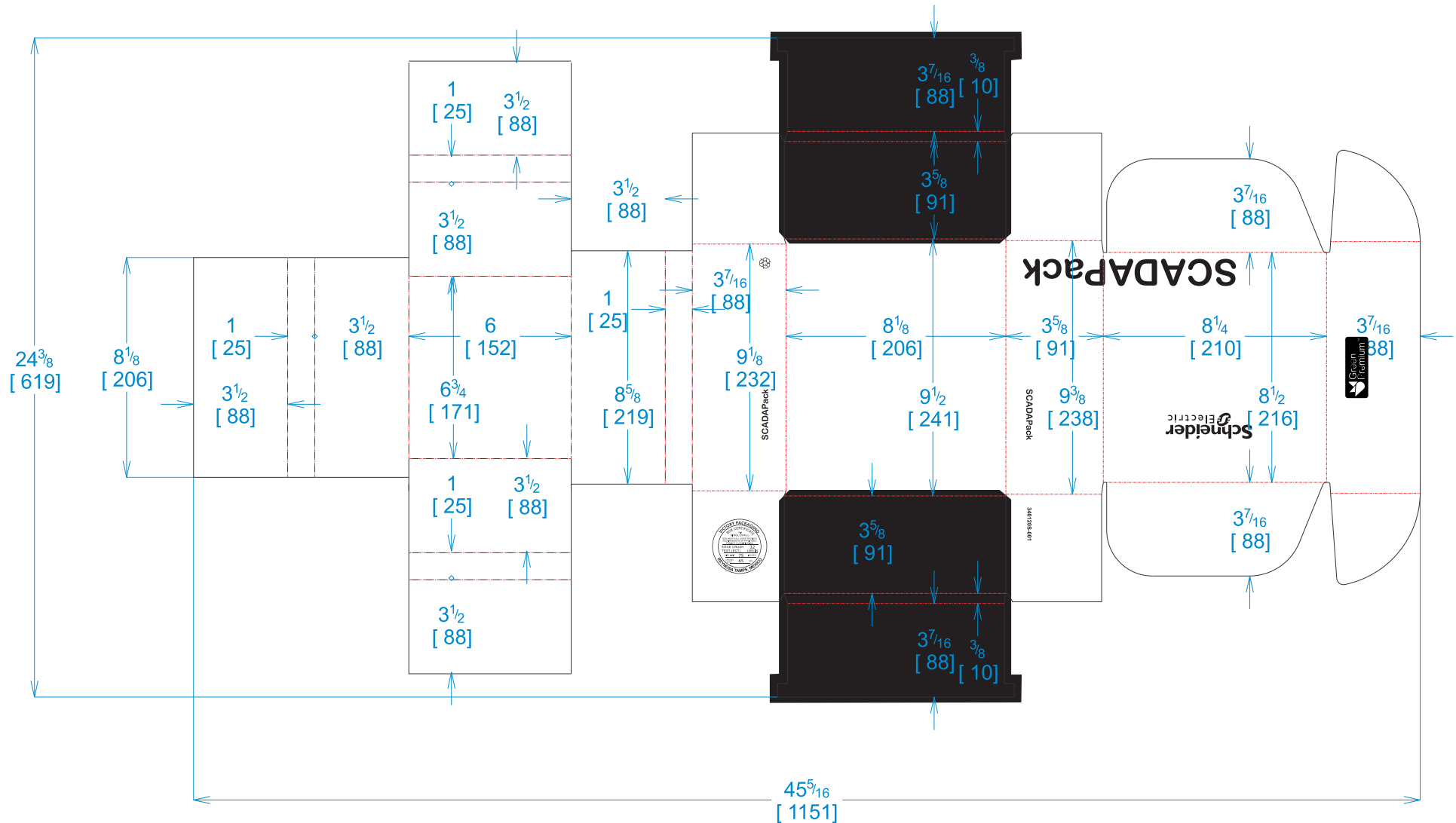




National Account Package Engineering  
engsupport@victorypackaging.com  
www.victorypackaging.com

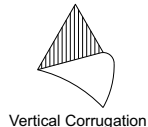
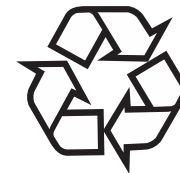
<b>CUSTOMER:</b> Schneider-Electric	<b>ID:</b> 8+3/8 x 8 x 3+7/16	<b>ENGINEER:</b> Gerrardo Arrambide	<b>DESIGN #:</b> <b>D12998588</b>	<b>0</b>
<b>ITEM:</b> 340120S-001 KRAFT	<b>BLANK SIZE:</b> 24+3/8 x 45+3/8	<b>SALES REP:</b> Veronica Bravo		
<b>CUST PROD. #:</b>	<b>SQ FT:</b> 7.68	<b>JOINT:</b> None	<b>DR #:</b> M1204-00068	
<b>STYLE:</b> DC	<b>WASTE (%):</b> 100	<b>CORR DIRECTION:</b> Vertical	<b>PRINT DATE:</b> 10/07/2020	
<b>MATERIAL:</b> 32 ECT B Kraft	<b>RULE TOTAL IN:</b> 415.758	<b>PROJECT NAME:</b> M204-00068 Schneider	<b>VIEW:</b> outside	
<b>MATERIAL NOTES:</b>		<b>GENERAL NOTES:</b>		



**SCADAPack**  
**340120S-001**

**Schneider**  
**Electric**

21.5mm



<b>Print Status:</b> Printed
<b>Colors:</b> GCM1 90 Black

General Tolerances unless otherwise noted:			
Die Cut Corrugated Flat:	+/- 1/16	Pad/Block location:	+/- 1/8
Die Cut Corrugated Rotary:	+/- 3/16	Pad/Sheet:	+/- 1/8
Wood Block:	+/- 1/4	Foam Block:	+/- 3/16

**Specification Release**  
**Approved for Production:**

**YES**