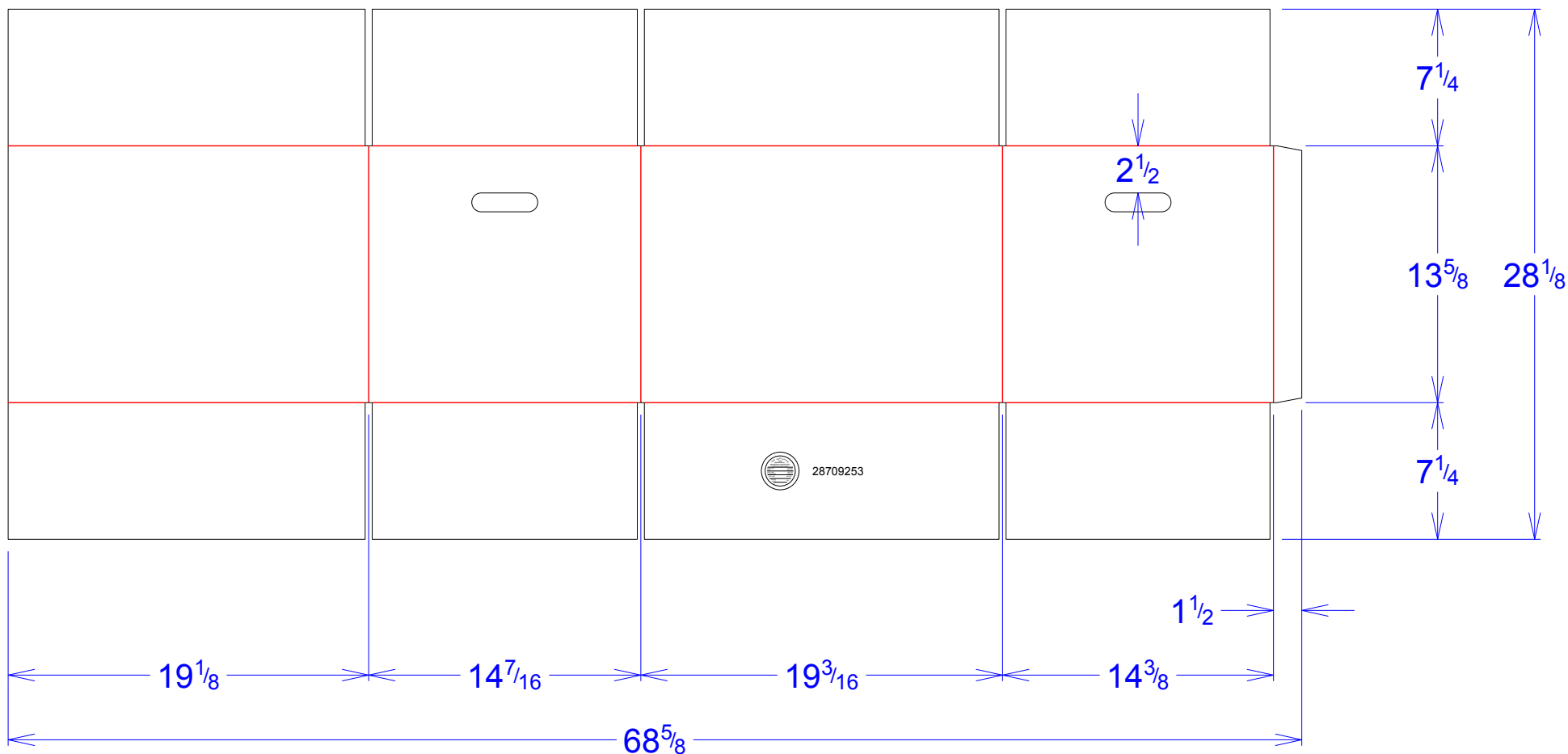




National Account Package Engineering  
engsupport@victorypackaging.com  
www.victorypackaging.com

CUSTOMER:	APTIV	ID:	18+7/8 x 14+1/8 x 13	ENGINEER:	Alejandro Olivas	DESIGN #:	<b>D12949327</b>	<b>0</b>
ITEM:	DDE28709253	BLANK SIZE:	28+1/8 x 68+5/8	SALES REP:	Lisa McCririe	DR #:	M183-00469	
CUST PROD. #:	28709253	SQ FT:	13.4	JOINT:	Glued In	PRINT DATE:	10/21/2019	
STYLE:	RSC	WASTE (%):	2.13	CORR DIRECTION:	Vertical	VIEW:	outside	
MATERIAL:	71 ECT BC Kraft	RULE TOTAL IN:	482.455	PROJECT NAME:	M183-00469 Rev 2 APTIV			
MATERIAL NOTES:				GENERAL NOTES:				



Vertical Corrugation

Print Status:	ID and Cert
Colors:	

General Tolerances unless otherwise noted:			
Die Cut Corrugated Flat:	+/- 1/16	Pad/Block location:	+/- 1/8
Die Cut Corrugated Rotary:	+/- 3/16	Pad/Sheet:	+/- 1/8
Wood Block:	+/- 1/4	Foam Block:	+/- 3/16

Specification Release  
Approved for Production:

Yes